

ELECTRONIC PACKET

March 22, 2021 Commission Meeting

RELEASED: Monday, March 15, 2021



Milwaukee Metropolitan Sewerage District

260 West Seeboth
Street
Milwaukee, WI
53204

Meeting Agenda Commission

Dan Devine, Chair
Eugene Manzanet, Vice Chair
Dan Bukiewicz, Tim Carpenter, LaTonya Johnson,
Bryan L. Kennedy, Ph.D., Chantia Lewis, Kris Martinsek,
Jeff Stone, John Swan, III, Corey Zetts

Monday, March 22, 2021

9:00 AM

Teams Online Meeting/Conference Call

NOTICE IS HEREBY GIVEN, pursuant to Section 19.84, Wisconsin Statutes, that the Milwaukee Metropolitan Sewerage District's Commission will hold its regularly scheduled public meeting on Monday, March 22, 2021, at 9:00 a.m. via Teams online meeting. The weblink to access this meeting is <https://tinyurl.com/yb9yurkz>; telephone dial-in is available through 414.909.9127, access code 551 846 047#.

PURSUANT TO SECTION 19.85(1)(g), Wisconsin Statutes, the Commission reserves the right to go into Closed Session on any item on the public portion of the agenda to confer with Legal Counsel when it appears the matter may involve the District in litigation. If the Commission does convene in such a Closed Session, it is contemplated that the Commission will again, before adjourning the meeting, reconvene at the same place in Open Session at which time the Commission may act upon any item(s) considered in the Closed Session and upon any unfinished items from the regular agenda.

CALL TO ORDER

RECORD ROLL

Approval of Proceedings of Regular Commission Meeting held February 22, 2021

NEW BUSINESS

21-004-1 Operations and Maintenance Report for February 2021 - Pat Obenauf & Scott Royer

OPERATIONS COMMITTEE MEETING REPORT

1 21-025-3 Award of Contract J01013C01, Preliminary Treatment Electrical Upgrade at Jones Island Water Reclamation Facility, Approve Changes in Total Project Cost, and Restore the Executive Director's Original Delegated Authority, Contract J01013D01

- 2 21-026-3 Award of Contract J04038C01, Jones Island Water Reclamation Facility Waste Heat Isolation and Flow Control Valve Replacement, and Approve Changes in Total Project Cost
- 3 21-027-3 Award of Contract J04061C01, Programmable Logic Control 5 Upgrade in the Dewatering and Drying Facility, and Approve Changes in Total Project Cost
- 4 21-028-3 Contract S01013D01, Engineering Services - South Shore Water Reclamation Facility Primary Clarification Upgrade
- 5 21-029-3 Change Order Request, Contract TS-2667, General On-Call Engineering Services - Water Reclamation Facilities, Restore the Executive Director's Original Delegated Authority, and Approve Changes in Total Project Cost, Project S02017
- 6 21-030-3 Contract C05055D01, Engineering Services - North 35th Street and West Roosevelt Drive Improvements Project
- 7 21-031-3 Contract TS-2682, On-Call Construction Services for Sewer Repair and Rehabilitation Projects
- 8 21-032-3 Contract TS-2683, On-Call Levee System Engineering and Accreditation Services, Project W20033
- 9 21-033-3 Approval of Funding Agreement M10005WE01 Under Project M10005, 2021 City of West Allis Private Property Infiltration and Inflow Reduction Project

POLICY, FINANCE & PERSONNEL COMMITTEE MEETING REPORT

- 10 21-034-3 Agreement between the Milwaukee Metropolitan Sewerage District and Milwaukee County for Kletzsch Dam Repair and Fish Passage Installation and Assume the Inter-Fluve, Inc., Contract from Milwaukee County
- 11 21-035-3 Settlement of Ferric Chloride Dispute with Veolia Water Milwaukee, LLC
- 12 21-036-3 Project Partnership Agreement with the United States Army Corps of Engineers for the Kinnickinnic River Reach 3, Project W40007
- 13 21-037-3 Agreement between the Milwaukee Metropolitan Sewerage District and Milwaukee County for the Kinnickinnic River Reach 3, Project W40007
- 14 21-038-3 Declaration of Excess Lands and Authorization to Transfer One Greenseams® Purchased Property and to Place a Greenseams® Conservation Easement over Two Properties Owned by Milwaukee Area Land Conservancy

- 15 21-039-3 Award of Contract G98002P10, Bioretention Basins and Turf Naturalization
- 16 21-040-3 Authorizing the Executive Director to Submit the Water Infrastructure Finance and Innovation Act of 2014 Application and Associated Fee

ORGANIZATION & ADMINISTRATION

21-003-1 EXECUTIVE DIRECTOR'S REPORT

- A. Monthly Reports
- B. Staff Recognition (Kevin Shafer)
- C. Veolia Year in Review (Scott Royer)
- D. Annual Performance Report (Mickie Pearsall)
- E. Private Property Infiltration and Inflow Emergency Declaration Update (Kevin Shafer)
- F. Stormwater Tree Project Award (Kevin Shafer)
- G. Overview of Workforce Development Programs (Pete Coffaro)

CLOSED SESSION


PURSUANT TO SECTION 19.85(1)(c), Wisconsin Statutes, the Commission will go into Closed Session for considering employment compensation and performance evaluation data of public employees over whom the Commission has jurisdiction.

CS1 21-041-3 Executive Director Annual Performance Review

PURSUANT TO SECTION 19.84, the Commission may reconvene in Open Session to continue discussion of items listed on the public agenda; and may reconvene in Closed Session again thereafter to further discuss any items not completed during the Closed Session and may thereafter reconvene in Open Session to further discuss the Open and Closed Session items. Any items taken up in Closed Session may subsequently be taken up in Open Session.

ADJOURNMENT

PLEASE NOTE: Upon reasonable notice, efforts will be made to accommodate the needs of disabled individuals through sign language interpreters or other auxiliary aids. For additional information or to request these services, contact the Office of the Commission at 414.225.2264, (FAX) 414.277.6360 or write to Office of the Commission, 260 W. Seeboth Street, Milwaukee, Wisconsin, 53204-1446.

A handwritten signature in black ink, appearing to read "Anna Kettlewell", written over a horizontal line.

**Anna Kettlewell, Commission Secretary
Milwaukee Metropolitan Sewerage District**



Milwaukee Metropolitan Sewerage District

260 West
Seebach Street
Milwaukee, WI
53204

Meeting Minutes Commission

Dan Devine, Chair
Eugene Manzanet, Vice Chair
Dan Bukiewicz, Tim Carpenter, LaTonya Johnson,
Bryan L. Kennedy, Ph.D., Chantia Lewis, Kris Martinsek,
Jeff Stone, John Swan, III, Corey Zetts

Monday, February 22, 2021

9:00 AM

Teams Online Meeting/Conference Call

CALL TO ORDER

Commission Chair Commissioner Devine called the meeting to order at 9:01 a.m.

RECORD ROLL

Present 10 - Dan Bukiewicz, Tim Carpenter, Dan Devine, LaTonya Johnson, Bryan L. Kennedy Ph.D., Eugene Manzanet, Kris Martinsek, Jeff Stone, John Swan III, and Corey Zetts

Excused 1 - Chantia Lewis

Commissioner Manzanet arrived at 9:21 a.m. during the Operations and Maintenance Report.

Approval of Proceedings of Regular Commission Meeting held January 25, 2021

A motion was made by Commissioner Bukiewicz, seconded by Commissioner Martinsek. The motion carried.

NEW BUSINESS

21-004-1 Operations and Maintenance Report for January 2021 - Pat Obenauf & Scott Royer

The Commission received a PowerPoint presentation from Patrick Obenauf, Manager of Contract Compliance, and Scott Royer, General Manager, Veolia Water Milwaukee, LLC, with comments by Kevin L. Shafer, P.E., Executive Director.

Commissioner Manzanet arrived at 9:21 a.m. during this report.

OPERATIONS COMMITTEE MEETING REPORT

Items 1-8 were taken as a block.

1 21-013-2

Authorizing the Executive Director to Execute a Purchase Order for Material Capital Repair or Replacement No. 1332, DC0309 and DC0507 Gate Cylinders, Project C98055

A motion was made by Commissioner Swan, seconded by Commissioner Kennedy, that this resolution be adopted by a roll call vote. The motion carried by the following roll call vote:

Yes: 10 - Commissioner Bukiewicz, Commissioner Carpenter, Commissioner Devine, Commissioner Johnson, Commissioner Kennedy Ph.D., Commissioner Manzanet, Commissioner Martinsek, Commissioner Stone, Commissioner Swan III and Commissioner Zetts

No: 0

Excused: 1 - Commissioner Lewis

2 21-014-2

Change Order Request, Purchase Order No. 11398, Material Capital Repair or Replacement No. 1364, Jones Island Water Reclamation Facility Bar Screen #3 Repairs, and Restore the Executive Director's Delegated Authority

A motion was made by Commissioner Swan, seconded by Commissioner Kennedy, that this resolution be adopted by a roll call vote. The motion carried by the following roll call vote:

Yes: 10 - Commissioner Bukiewicz, Commissioner Carpenter, Commissioner Devine, Commissioner Johnson, Commissioner Kennedy Ph.D., Commissioner Manzanet, Commissioner Martinsek, Commissioner Stone, Commissioner Swan III and Commissioner Zetts

No: 0

Excused: 1 - Commissioner Lewis

3 21-015-2

Restore Executive Director's Original Delegated Authority, Contract J04067C01, Dewatering and Drying South Cake Loadout Addition at Jones Island Water Reclamation Facility

A motion was made by Commissioner Swan, seconded by Commissioner Kennedy, that this resolution be adopted by a roll call vote. The motion carried by the following roll call vote:

Yes: 10 - Commissioner Bukiewicz, Commissioner Carpenter, Commissioner Devine, Commissioner Johnson, Commissioner Kennedy Ph.D., Commissioner Manzanet, Commissioner Martinsek, Commissioner Stone, Commissioner Swan III and Commissioner Zetts

No: 0

Excused: 1 - Commissioner Lewis

- 4 21-016-2 Authorizing the Executive Director to Execute a Purchase Order for Material Capital Repair or Replacement No. 1321, South Shore Water Reclamation Facility Flow Control Structure Repairs, Project S06038
- A motion was made by Commissioner Swan, seconded by Commissioner Kennedy, that this resolution be adopted by a roll call vote. The motion carried by the following roll call vote:
- Yes: 10 - Commissioner Bukiewicz, Commissioner Carpenter, Commissioner Devine, Commissioner Johnson, Commissioner Kennedy Ph.D., Commissioner Manzanet, Commissioner Martinsek, Commissioner Stone, Commissioner Swan III and Commissioner Zetts
- No: 0
- Excused: 1 - Commissioner Lewis
- 5 21-017-2 Award of Contract S06045C06, Scum Concentrator Overhaul and Scum Press Replacement at South Shore Water Reclamation Facility
- A motion was made by Commissioner Swan, seconded by Commissioner Kennedy, that this resolution be adopted by a roll call vote. The motion carried by the following roll call vote:
- Yes: 10 - Commissioner Bukiewicz, Commissioner Carpenter, Commissioner Devine, Commissioner Johnson, Commissioner Kennedy Ph.D., Commissioner Manzanet, Commissioner Martinsek, Commissioner Stone, Commissioner Swan III and Commissioner Zetts
- No: 0
- Excused: 1 - Commissioner Lewis
- 6 21-018-2 Authorizing the Executive Director to Execute a Purchase Order for Material Capital Repair or Replacement Nos. 1319, 1368, 1374, 1376, and 1400, South Shore Water Reclamation Facility Sump Pump System Replacements
- A motion was made by Commissioner Swan, seconded by Commissioner Kennedy, that this resolution be adopted by a roll call vote. The motion carried by the following roll call vote:
- Yes: 10 - Commissioner Bukiewicz, Commissioner Carpenter, Commissioner Devine, Commissioner Johnson, Commissioner Kennedy Ph.D., Commissioner Manzanet, Commissioner Martinsek, Commissioner Stone, Commissioner Swan III and Commissioner Zetts
- No: 0
- Excused: 1 - Commissioner Lewis

- 7 21-019-2 Change Order Request, Contract W20028D01, Engineering Services - Western Milwaukee Flood Management Project - Phase 2B, and Restore the Executive Director's Original Delegated Authority
- A motion was made by Commissioner Swan, seconded by Commissioner Kennedy, that this resolution be adopted by a roll call vote. The motion carried by the following roll call vote:
- Yes: 10 - Commissioner Bukiewicz, Commissioner Carpenter, Commissioner Devine, Commissioner Johnson, Commissioner Kennedy Ph.D., Commissioner Manzanet, Commissioner Martinsek, Commissioner Stone, Commissioner Swan III and Commissioner Zetts
- No: 0
- Excused: 1 - Commissioner Lewis
- 8 21-020-2 Award of Contract W40009D02, Deconstruction of We Energies South Service Center at 2425 South 35th Street, and Approve Changes in Total Project Costs
- A motion was made by Commissioner Swan, seconded by Commissioner Kennedy, that this resolution be adopted by a roll call vote. The motion carried by the following roll call vote:
- Yes: 10 - Commissioner Bukiewicz, Commissioner Carpenter, Commissioner Devine, Commissioner Johnson, Commissioner Kennedy Ph.D., Commissioner Manzanet, Commissioner Martinsek, Commissioner Stone, Commissioner Swan III and Commissioner Zetts
- No: 0
- Excused: 1 - Commissioner Lewis

POLICY, FINANCE & PERSONNEL COMMITTEE MEETING REPORT

Items 9-11 were taken as a block.

- 9 21-021-2 Agreement between the Milwaukee Metropolitan Sewerage District and the City of Milwaukee Regarding the Western Milwaukee Phase 2B Project W20028
- A motion was made by Commissioner Stone, seconded by Commissioner Zetts, that this resolution be adopted by a roll call vote. The motion carried by the following roll call vote:
- Yes: 10 - Commissioner Bukiewicz, Commissioner Carpenter, Commissioner Devine, Commissioner Johnson, Commissioner Kennedy Ph.D., Commissioner Manzanet, Commissioner Martinsek, Commissioner Stone, Commissioner Swan III and Commissioner Zetts
- No: 0
- Excused: 1 - Commissioner Lewis

- 10 21-022-2** **Authorizing the Executive Director to Continue a Self-insured Workers' Compensation Program**
- A motion was made by Commissioner Stone, seconded by Commissioner Zetts, that this resolution be adopted by a roll call vote. The motion carried by the following roll call vote:**
- Yes: 10 -** Commissioner Bukiewicz, Commissioner Carpenter, Commissioner Devine, Commissioner Johnson, Commissioner Kennedy Ph.D., Commissioner Manzanet, Commissioner Martinsek, Commissioner Stone, Commissioner Swan III and Commissioner Zetts
- No: 0**
- Excused: 1 -** Commissioner Lewis
-
- 11 21-023-2** **Declaration of the Public Necessity and Approval of the Acquisition Plat (Relocation Order) for the Project C05051, Edgewood Avenue Near Surface Collector Extension Project**
- A motion was made by Commissioner Stone, seconded by Commissioner Zetts, that this resolution be adopted by a roll call vote. The motion carried by the following roll call vote:**
- Yes: 10 -** Commissioner Bukiewicz, Commissioner Carpenter, Commissioner Devine, Commissioner Johnson, Commissioner Kennedy Ph.D., Commissioner Manzanet, Commissioner Martinsek, Commissioner Stone, Commissioner Swan III and Commissioner Zetts
- No: 0**
- Excused: 1 -** Commissioner Lewis

ORGANIZATION & ADMINISTRATION

21-003-1

EXECUTIVE DIRECTOR'S REPORT

- A. Monthly Reports
- B. Staff Recognition (Kevin Shafer)
- C. Government Finance Officers Association Award of Financial Reporting Achievement (Mickie Pearsall)
- D. 2021 Goals (Mickie Pearsall)
- E. Private Property Infiltration and Inflow Emergency Declaration Update (Kevin Shafer)

A. No report.

B. No report.

C. The Commission received a presentation from Kevin L. Shafer, P.E., Executive Director.

D. The Commission received a PowerPoint presentation from Christine Durkin, Management and Budget Analyst, with comments by Kevin L. Shafer, P.E., Executive Director.

Commissioner Johnson departed the meeting at 9:30 a.m. during this report.

E. The Commission received a presentation from Kevin L. Shafer, P.E., Executive Director.

ADJOURNMENT

It was moved by Commissioner Manzanet, seconded by Commissioner Swan, to adjourn. The motion carried.

As there was no further business, the meeting was adjourned at 9:34 a.m.



**Anna Kettlewell, Commission Secretary
Milwaukee Metropolitan Sewerage District**

COMMISSION MEETING

March 22, 2021

**OPERATIONS AND MAINTENANCE REPORT FOR FEBRUARY 2021 – PAT
OBENAUF & SCOTT ROYER**

21-004-01

**PowerPoint presentation from Patrick Obenauf, Manager of Contract Compliance,
and Scott Royer, General Manager, Veolia Water Milwaukee, LLC**

COMMISSION FILE NO: 21-025-3 **DATE INTRODUCED:** March 8, 2021

INTRODUCED BY: Executive Director (Signature on File in the Office of the Commission)

REFERRED BY COMMISSION CHAIRPERSON TO: Operations Committee

RELATING TO: Award of Contract J01013C01, Preliminary Treatment Electrical Upgrade at Jones Island Water Reclamation Facility, Approve Changes in Total Project Cost, and Restore the Executive Director's Original Delegated Authority, Contract J01013D01

SUMMARY:

The Commission is requested to award and to direct the Executive Director to execute on behalf of the District Contract J01013C01, Preliminary Treatment Electrical Upgrade at Jones Island Water Reclamation Facility (JIWRF), to Pieper Electric, Inc., in the amount of \$4,754,085. Pieper Electric, Inc., was the lowest responsible, responsive bidder among three bids received.

Further, the Commission is requested to decrease the total project cost (TPC) for Project J01013, Preliminary Facility Electrical Upgrade, by \$1,067,010 for an amended TPC of \$6,040,000 and to make a corresponding change to the TPC for Project J99001, Allowance for Cost and Schedule Changes.

Further, the Commission is requested to restore the Executive Director's original delegated authority for Contract J01013D01, Engineering Services – Preliminary Treatment Electrical Upgrade at Jones Island Water Reclamation Facility.

The Preliminary Treatment Building at JIWRF contains the following equipment:

- Influent screens
- High and low level screw pumps
- Grit processing equipment
- Heating and ventilation equipment
- Electrical equipment to distribute and control power
- Lighting
- Ancillary support equipment

ATTACHMENTS: **BACKGROUND** ☐ **KEY ISSUES** ☐ **RESOLUTION** ☒

FISCAL NOTE ☒ **S/W/MBE** ☒ **OTHER** ☐ _____

OP_Award_J01013C01_Prelim_Electrical_Upgrade_legislative_file.docx
02-04-21

COMMITTEE ACTION: _____ **DATE:** _____

COMMISSION ACTION: _____ **DATE:** _____

SUMMARY (Cont'd)

Award of Contract J01013C01, Preliminary Treatment Electrical Upgrade at Jones Island Water Reclamation Facility, Approve Changes in Total Project Cost, and Restore the Executive Director's Original Delegated Authority, Contract J01013D01

The Preliminary Treatment Building was designed and constructed in the early 1980's, prior to the first edition of National Fire Protection Association (NFPA) 820 "Standard for Fire Protection in Wastewater Treatment and Collection Facilities" in 1990. NFPA 820 establishes standards for "construction, ventilation, and electrical installation in wastewater facilities for protection against fire and explosion hazards." Although the Wisconsin Administrative Code has not adopted NFPA 820 as a reference standard, NFPA 820 is widely accepted by engineering professionals as a guide for the design and construction of wastewater facilities. There are several areas in the Preliminary Treatment Building that do not presently meet the standard, as they were designed and constructed prior to the standard being in place.

In addition, some of the electrical equipment within the facility is over 30 years old and is nearing the end of its useful service life. To reduce safety risks and to replace aging equipment, staff recommends updating and replacing various electrical equipment and ancillary assets within the Preliminary Treatment Facility.

Under Contract J01013C01, the contractor will:

- Remove and replace:
 - Five motor control centers: 203-MCC-1, 2, 5, 6, and 9,
 - Motors for screw pumps, water pumps, and lubrication oil pumps,
 - Screw pump motor conduits and conductors,
 - Control stations,
 - Gate actuators,
 - Light fixtures,
 - Three bridge cranes, and
 - The gas detection system.
- Provide new electrical rooms and separation vestibules to meet the NFPA 820 standard.
- Provide new panelboards and low voltage distribution equipment.

The contract duration is 705 calendar days.

The low bid received by the District is less than budgeted, and staff requests to decrease the TPC accordingly.

SUMMARY (Cont'd)

Award of Contract J01013C01, Preliminary Treatment Electrical Upgrade at Jones Island Water Reclamation Facility, Approve Changes in Total Project Cost, and Restore the Executive Director's Original Delegated Authority, Contract J01013D01

In February 2019, the District awarded Contract J01013D01, Engineering Services – Preliminary Treatment Electrical Upgrade at Jones Island Water Reclamation Facility, to Donohue & Associates, Inc., in an amount not to exceed \$392,996. The scope of Contract J01013D01 includes engineering design services, developing construction bid documents, bid and award services, and engineering services during construction, all related to contract J01013C01.

For engineering services contracts under \$500,000, the Commission has delegated to the Executive Director the authority to make changes up to \$50,000. To date, the Executive Director has utilized \$48,690 of this authority, leaving a balance of \$1,310. The request to restore the Executive Director's authority is in case any additional engineering services are needed.

RESOLUTION

Award of Contract J01013C01, Preliminary Treatment Electrical Upgrade at Jones Island Water Reclamation Facility, Approve Changes in Total Project Cost, and Restore the Executive Director's Original Delegated Authority, Contract J01013D01

RESOLVED, by the Milwaukee Metropolitan Sewerage Commission, that Contract J01013C01, Preliminary Treatment Electrical Upgrades at Jones Island Water Reclamation Facility, is awarded to Pieper Electric, Inc., in the amount of \$ 4,754,085, and that the Executive Director is directed to execute a contract on behalf of the District.

FURTHER RESOLVED, by the Milwaukee Metropolitan Sewerage Commission, that the total project cost for Project J01013, Preliminary Facility Electrical Upgrade, is decreased by \$1,067,010 for an amended total project cost of \$6,040,000, and that a corresponding change is made to the total project cost for Project M99001, Allowance for Cost and Schedule Changes.

FURTHER RESOLVED, by the Milwaukee Metropolitan Sewerage Commission, that the Executive Director's original delegated authority is restored on Contract J01013D01, Engineering Services – Preliminary Treatment Electrical Upgrade at Jones Island Water Reclamation Facility.



Capital Budget Fiscal Note

Total Project Cost

RELATING TO:

Award of Contract J01013C01, Preliminary Treatment Electrical Upgrade at Jones Island Water Reclamation Facility, Approve Changes in Total Project Cost, and Restore the Executive Director's Original Delegated Authority, Contract J01013D01

Capital Project Number(s)

J01013

Impact of Requested Action on Total Project Cost:

☐

Increase

☒

Decrease

☐

New Project

☐

No Change

Total Project Cost Analysis

Adopted 2021 Total Project Cost

Previously Approved Changes

Approved Total Project Cost

Requested Total Project Cost

Requested (Increase)/Decrease

Project Costs

\$7,107,010

\$0

\$7,107,010

\$6,040,000

\$1,067,010

Action to be taken to Long-Range Financing Plan to address Total Project Cost change

_____ Transfer from Allowance for Cost and Schedule Changes

_____ Transfer from another project (specify in comments)

_____ Delay Project(s) (specify in comments)

_____ Delete Project(s) (specify in comments)

_____ Other _____

_____ x Transfer to Allowance for Cost and Schedule Changes

Comments

The low bid received by the District is less than budgeted, and staff requests to decrease the TPC accordingly.

Budget Review by:

Theresa Zwieg

Date:

2/1/2021

Award of Contract J01013C01, Preliminary Treatment Electrical Upgrade at Jones Island Water Reclamation Facility, Approve Changes in Total Project Cost, and Restore the Executive Director's Original Delegated Authority, Contract J01013D01



Procurement & S/W/MBE Summary Information

Contract # J01013C01 **Cost Center:** ENG

Preliminary Treatment Electrical Upgrade at Jones Island Water Reclamation Facility, Approve Changes in Total Project Cost, and Restore the Executive Director's Original Delegated Authority, Contract J01013D01

BID SUMMARY

Bid Opening Date: 1/7/2021

	Total	SWMBE	Local
# of Bids	3	0	2
# of Responsive Bids	3	0	2

Bidders	Price	Responsive?	Responsible?	% Sub	% SWMBE
Pieper Electric, Inc. New Berlin, WI 53151	\$4,754,085.00	Responsive	Responsible	61.5%	29.2%
NEXT Electric, LLC Waukesha, WI 53186	\$4,834,503.00	Responsive	Responsible	Not provided	Not provided
Staff Electric Co., Inc. Menomonee Falls, WI 53051	\$5,996,993.00	Responsive	Responsible	41.6%	22.0%

SUBCONTRACTOR INFORMATION

Type	Subcontractor Name	Type of Work	%	Amount
MBE	Platt Construction, Inc. Franklin, WI 53132	Construction, structural	8.1%	\$386,527.00
SBE	Revere Electric Supply Inc. Hartland, WI 53209	Electrical, wiring, electrical supplies	8.9%	\$422,577.00
SBE	Lift Incorporated Milwaukee, WI 53209	Crane construction	12.2%	\$580,900.00
Non-SWMBE	JF Ahern Fond du Lac, WI 54936	Electrical	24.8%	\$1,179,000.00
Non-SWMBE	Enhanced Automation Menomonee Falls, WI 53051	Electrical/I&C, applications engineering	7.5%	\$355,168.00

ECONOMIC DEVELOPMENT ELEMENTS

Workforce Requirements

Sanitary Sewer Service Area (SSSA)

Employment:	<u>45%</u>
-------------	------------

Target Area (TA) Employment:	<u>20%</u>
------------------------------	------------

# Apprentices Required:	<u>3</u>
-------------------------	----------

OUTREACH INFORMATION

The Procurement team performed the following outreach: advertised in the Daily Reporter, sent an e-mail notification to all registered firms in the general construction category, sent targeted e-mails to potential prime bidders and SWMBE firms, and notified the various local chambers of commerce. The bid opportunity is also publicly accessible from the MMSD website and Quest CDN. Quest CDN also performs outreach to its users when a bid is posted.

S/W/MBE Planholders:

Enhanced Automation
Flygt A Xylem Brand
Platt Construction, Inc.
Energenecs, Inc
Sabel Mechanical
Allcon LLC

If no or low S/W/MBE participation, explain why:

NA

Additional Comments:

NA

AWARDEE INFORMATION

Company:	<u>Pieper Electric, Inc.</u>
Contact Person:	<u>Tom Scherer</u>
Phone Number:	<u>(414) 462-7700</u>
E-mail Address:	<u>tom.scherer@pieperpower.com</u>

EEO DATA

5477 S. Westridge Court, New
Location: Berlin, WI 53151

	<u>Total</u>	<u>%</u>
Minorities	75	5.5%
African American	23	1.7%
Asian	6	0.4%
Hispanic	46	3.4%
Native American	0	0.0%

Labor Market Availability - Minorities 22.0%

Total # of Employees 1,353

	<u>Total</u>	<u>%</u>
Females	104	7.7%
African American	3	0.2%
Asian	0	0.0%
Hispanic	8	0.6%
Native American	0	0.0%

*Labor Market Availability -
Females* 49.0%

COMMISSION FILE NO: 21-026-3 **DATE INTRODUCED:** March 8, 2021

INTRODUCED BY: Executive Director (Signature on File in the Office of the Commission)

REFERRED BY COMMISSION CHAIRPERSON TO: Operations Committee

RELATING TO: Award of Contract J04038C01, Jones Island Water Reclamation Facility Waste Heat Isolation and Flow Control Valve Replacement, and Approve Changes in Total Project Cost

SUMMARY:

The Commission is requested to award and to direct the Executive Director to execute on behalf of the District Contract J04038C01, Jones Island Water Reclamation Facility (JIWRF) Waste Heat Isolation and Flow Control Valve Replacement, to Butters-Fetting Company, Inc., in the amount of \$2,558,189. Butters-Fetting was the lowest responsible, responsive bidder among four bids received.

Further, the Commission is requested to decrease the total project cost (TPC) for Project J04038, Drying and Dewatering (D&D) Dryers Guillotine Gate Replacement, by \$991,811 for an amended TPC of \$3,534,543 and to make a corresponding change to the TPC of Project M99001, Allowance for Cost and Schedule Changes.

The D&D Facility at JIWRF has been in service since 1994. A total of 12 Milorganite® dryers utilize a combination of natural gas, landfill gas, and waste heat from the JIWRF turbines to supply heat to the dryers. The dryer waste heat isolation and flow control valves isolate and modulate the waste heat supplied to each dryer. The isolation valves allow for safe entry into dryers that are out of service, and the flow control valves are used to modulate the flow of waste heat to each dryer. Most equipment is original to the building.

The isolation and flow control valves have reached the end of their service lives. The isolation valves have experienced seal, actuator, and bearing problems, preventing them from closing properly. The flow control valves have experienced wear and spring failures. The flow control valves periodically stick when called to open and the valve actuators are obsolete and repair or replacement parts are difficult to obtain.

ATTACHMENTS: **BACKGROUND** ☐ **KEY ISSUES** ☐ **RESOLUTION** ☒
FISCAL NOTE ☒ **S/W/MBE** ☒ **OTHER** ☐ _____

OP_Award_J04038C01_Valve_Replacement_legislative_file.docx
02-04-21

COMMITTEE ACTION: _____ **DATE:** _____

COMMISSION ACTION: _____ **DATE:** _____

SUMMARY (Cont'd)

Award of Contract J04038C01, Jones Island Water Reclamation Facility Waste Heat Isolation and Flow Control Valve Replacement, and Approve Changes in Total Project Cost

The purpose of this project is to restore operational reliability of the D&D waste heat control system. Under Contract J04038C01, the contractor will:

- Replace the following equipment with new:
 - 12 existing waste heat isolation valves, seal air blowers, seal air isolation valves, and seal air ductwork.
 - 12 existing waste heat flow control valves.
 - Existing electrical conduits and conductors.
- Make modifications and improvements to:
 - Mechanical systems and waste heat ductwork associated with the isolation and flow control valve replacements.
 - Existing power distribution panels.
- Modify isolation and flow control valve control system to remove existing local control panels and transfer control responsibilities to existing dryer control panels.
- Paint new equipment.

The low bid received is less than budgeted, and staff requests to decrease the TPC accordingly.

The duration for this contract is 807 calendar days.

RESOLUTION

Award of Contract J04038C01, Jones Island Water Reclamation Facility Waste Heat Isolation and Flow Control Valve Replacement, and Approve Changes in Total Project Cost

RESOLVED, by the Milwaukee Metropolitan Sewerage Commission, that Contract J04038C01, Jones Island Water Reclamation Facility Waste Heat Isolation and Flow Control Valve Replacement, is awarded to Butters-Fetting Company, Inc., in the amount of \$2,558,189, and that the Executive Director is directed to execute a contract on behalf of the District.

FURTHER RESOLVED, by the Milwaukee Metropolitan Sewerage Commission, that the total project cost for Project J04038, Drying and Dewatering Dryers Guillotine Gate Replacement, is decreased by \$991,811 for an amended total project cost of \$3,534,543, and that a corresponding change is made to the total project cost for Project M99001, Allowance for Cost and Schedule Changes.



Capital Budget Fiscal Note

Total Project Cost

RELATING TO:

Award of Contract J04038C01, Jones Island Water Reclamation Facility Waste Heat Isolation and Flow Control Valve Replacement, and Approve Changes in Total Project Cost

Capital Project Number(s)

J04038

Impact of Requested Action on Total Project Cost:

☐ Increase ☒ Decrease ☐ New Project ☐ No Change

Total Project Cost Analysis

Adopted 2021 Total Project Cost
Previously Approved Changes
Approved Total Project Cost
Requested Total Project Cost
Requested (Increase)/Decrease

Project Costs

\$4,526,354
\$0
\$4,526,354
\$3,534,543
\$991,811

Action to be taken to Long-Range Financing Plan to address Total Project Cost change

_____ Transfer from Allowance for Cost and Schedule Changes
_____ Transfer from another project (specify in comments)
_____ Delay Project(s) (specify in comments)
_____ Delete Project(s) (specify in comments)
_____ Other _____
_____ x Transfer to Allowance for Cost and Schedule Changes

Comments

The low bid received by the District for Contract J04038C01 is less than budgeted, and staff requests to decrease the TPC accordingly.

Budget Review by:

Theresa Zwieg

Date:

2/1/2021

Award of Contract J04038C01, Jones Island Water Reclamation Facility Waste Heat Isolation and Flow Control Valve Replacement, and Approve Changes in Total Project Cost



Procurement & S/W/MBE Summary Information

Contract # J04038C01 **Cost Center:** ENG

Jones Island Water Reclamation Facility Waste Heat Isolation and Flow Control Valve Replacement

BID SUMMARY

Bid Opening Date: 1/20/2021

	Total	SWMBE	Local
# of Bids	4	0	2
# of Responsive Bids	3	0	1

Bidders	Price	Responsive?	Responsible?	% Sub	% SWMBE
Butters-Fetting Co., Inc. Milwaukee, WI 53204	\$2,558,189.00	Responsive	Responsible	31.2%	2.6%
Lee Plumbing Mechanical Contractors, Inc. Kenosha, WI 53140	\$2,695,500.00	Responsive	Responsible	38.5%	6.5%
J.F. Ahern Co. Fond du Lac, WI 54935	\$2,827,000.00	Responsive	Responsible	18.9%	5.9%
Doral Corporation Milwaukee, WI 53207	\$3,140,000.00	Not Reviewed	Not Reviewed	Not provided	9.0%

SUBCONTRACTOR INFORMATION

Type	Subcontractor Name	Type of Work	%	Amount
MBE	P.L. Freeman Co., Inc. Brookfield, WI 53045	Plant piping, air piping	1.6%	\$40,425.00
MBE	Thomas A. Mason Co., Inc. Milwaukee, WI 53212	Painting	0.7%	\$16,725.00
WBE	Vyron Corporation Waukesha, WI 53188	HVAC	0.4%	\$9,450.00
Non-SWMBE	Doral Corporation Milwaukee, WI 53207	Fabrication and rigging	14.3%	\$365,349.00
Non-SWMBE	Insulation Industries Inc. Oconomowoc, WI 53066	Insulation	7.1%	\$181,000.00
Non-SWMBE	Pieper Power New Berlin, WI 53151	Electrical and control	7.2%	\$185,000.00

ECONOMIC DEVELOPMENT ELEMENTS

Workforce Requirements

Sanitary Sewer Service Area (SSSA)

Employment: 45%

Target Area (TA) Employment: 20%

Apprentices Required: 2

OUTREACH INFORMATION

The Procurement team performed the following outreach: advertised in the Daily Reporter and sent an e-mail notification to all registered firms in the Construction category. The bid opportunity is also publicly accessible from the MMSD website and Quest CDN. Quest CDN also performs outreach to its users when a bid is posted.

S/W/MBE Planholders:

Belonger Corporation; Zien Mechanical Contractors

If no or low S/W/MBE participation, explain why:

The prime sought SWMBE participation for painting, HVAC, and piping. Quotes were accepted from three of the four SWMBE firms who responded.

Additional Comments:

n/a

AWARDEE INFORMATION

Company: Butters-Fetting Co., Inc.
Contact Person: Dan Norton
Phone Number: (414) 649-2151
E-mail Address: dnorton@butfersfetting.com

EEO DATA

1669 S. First Street		Total # of Employees		256	
Location: Milwaukee, WI 53204					
	<u>Total</u>	<u>%</u>		<u>Total</u>	<u>%</u>
Minorities	22	8.6%	Females	17	6.6%
Asian	0	0.0%	Asian	0	0.0%
Black or African American	5	2.0%	Black or African American	0	0.0%
Hispanic or Latino	14	5.5%	Hispanic or Latino	1	0.4%
Native American	3	1.2%	Native American	0	0.0%
Other Minority	0	0.0%	Other Minority	0	0.0%
Labor Market Availability - Minorities		22.0%	Labor Market Availability - Females		49.0%

COMMISSION FILE NO: 21-027-3 **DATE INTRODUCED:** March 8, 2021

INTRODUCED BY: Executive Director (Signature on File in the Office of the Commission)

REFERRED BY COMMISSION CHAIRPERSON TO: Operations Committee

RELATING TO: Award of Contract J04061C01, Programmable Logic Control 5 Upgrade in the Dewatering and Drying Facility, and Approve Changes in Total Project Cost

SUMMARY:

The Commission is requested to award and to direct the Executive Director to execute on behalf of the District Contract J04061C01, Programmable Logic Control (PLC) 5 Upgrade in the Dewatering and Drying (D&D) Facility, to Allan Integrated Control Systems, Inc., (AICS) in the amount of \$1,499,642. AICS was the lowest responsible, responsive bidder among four bids received.

Further, the Commission is requested to decrease the total project cost (TPC) for Project J04061, D&D PLC 5 Upgrades, by \$2,876,379 for an amended TPC of \$5,021,660 and to make a corresponding change to the TPC for Project M99001, Allowance for Cost and Schedule Changes.

The District's D&D Facility houses equipment utilized to produce Milorganite®. Twenty-four belt filter presses dewater plant sludges, and 12 rotary dryers dry the dewatered sludge. Dried solids are classified using screens and mills to create a consistent Milorganite® product size. Product is cooled and placed into storage bins to await transport to the Milorganite® Storage Building. The D&D Facility also contains conveyors, bucket elevators, holding tanks, air emissions equipment, and other supporting systems. The D&D Facility has been in use since 1994.

ATTACHMENTS: **BACKGROUND** ☐ **KEY ISSUES** ☐ **RESOLUTION** ☒
FISCAL NOTE ☒ **S/W/MBE** ☒ **OTHER** ☐ _____

OP_Award_J04061C01_Dewatering_and_Drying_PLC5_Upgrade_legislative_file.docx
02-18-21

COMMITTEE ACTION: _____ **DATE:** _____

COMMISSION ACTION: _____ **DATE:** _____

SUMMARY (Cont'd)

Award of Contract J04061C01, Programmable Logic Control 5 Upgrade in the Dewatering and Drying Facility, and Approve Changes in Total Project Cost

Approximately 66 PLC's are distributed throughout the D&D Facility and provide localized control of equipment. A PLC is an industrial computer designed specifically for the control of manufacturing processes in challenging environments. The existing set of PLC's (Allen Bradley PLC5) were installed in 1994. Rockwell Automation, the parent company of Allen Bradley, announced that the PLC5 product line has reached its end of life; they have discontinued manufacturing new parts, and equipment repair will depend solely upon existing parts inventory. This creates a situation where, without replacement, the District's D&D control system will ultimately be unable to control the D&D Facility.

It is critical that PLC control equipment be functional and maintainable for the continued operation of the D&D Facility. The purpose of this project is to replace the existing PLC5 control platform and accompanying control equipment with a modern, serviceable control platform and equipment. The improved functionality of the new control equipment will provide enhanced performance, fault tolerance, and safety.

Under Contract J04061C01, the contractor will:

- Upgrade 60 PLC5's to Allen Bradley ControlLogix PLC's.
- To improve the capability of the existing PLC communication network, upgrade network switches and cabling.
- Replace existing alarm annunciators with human/machine interface panels.
- Provide hardware and programming enhancements to improve operator control, visibility, fault tolerance, and safety.
- Provide control system integration, testing, commissioning, startup, training and documentation.

Upgrades to the remaining six PLC's in the D&D Facility are included with other projects that are replacing their PLC controlled equipment.

The duration of this contract is 3.75 years.

The low bid received by the District is less than budgeted, and staff requests to decrease the TPC accordingly.

RESOLUTION

Award of Contract J04061C01, Programmable Logic Control 5 Upgrade in the Dewatering and Drying Facility, and Approve Changes in Total Project Cost

RESOLVED, by the Milwaukee Metropolitan Sewerage Commission, that Contract J04061C01, Programmable Logic Control 5 Upgrade in the Dewatering and Drying Facility, is awarded to Allan Integrated Control Systems, Inc., in the amount of \$1,499,642, and that the Executive Director is directed to execute a contract on behalf of the District.

FURTHER RESOLVED, by the Milwaukee Metropolitan Sewerage Commission, that the total project cost for Project J04061, D&D Programmable Logic Control 5 Upgrades, is decreased by \$2,876,379 for an amended total project cost of \$5,021,660, and that a corresponding change is made to the total project cost for Project M99001, Allowance for Cost and Schedule Changes.



Capital Budget Fiscal Note

Total Project Cost

RELATING TO:

Award of Contract J04061C01, Programmable Logic Control 5 Upgrade in the Dewatering and Drying Facility, and Approve Changes in Total Project Cost

Capital Project Number(s)

J04061

Impact of Requested Action on Total Project Cost:

☐ Increase ☒ Decrease ☐ New Project ☐ No Change

Total Project Cost Analysis

Project Costs

Adopted 2021 Total Project Cost	<u>\$7,898,039</u>
Previously Approved Changes	<u>\$0</u>
Approved Total Project Cost	<u>\$7,898,039</u>
Requested Total Project Cost	<u>\$5,021,660</u>
Requested (Increase)/Decrease	<u>\$2,876,379</u>

Action to be taken to Long-Range Financing Plan to address Total Project Cost change

☐ Transfer from Allowance for Cost and Schedule Changes
☐ Transfer from another project (specify in comments)
☐ Delay Project(s) (specify in comments)
☐ Delete Project(s) (specify in comments)
☐ Other _____
☒ Transfer to Allowance for Cost and Schedule Changes

Comments

The Commission is requested to award and to direct the Executive Director to execute on behalf of the District Contract J04061C01, PLC 5 Upgrade in the Dewatering and Drying (D&D) Facility, to Allan Integrated Control Systems, Inc, (AICS) in the amount of \$1,499,642. AICS was the lowest responsible, responsive bidder among four bids received.

Budget Review by:

Theresa Zwieg

Date:

2/17/2021

Award of Contract J04061C01, Programmable Logic Control 5 Upgrade in the Dewatering and Drying Facility, and Approve Changes in Total Project Cost



Procurement & S/W/MBE Summary Information

Contract # J04061C01 **Cost Center:** ENG

PLC 5 Upgrade in the Dewatering and Drying Facility, and Approve Changes in Total Project Cost

BID SUMMARY

Bid Opening Date: 2/16/2021

	Total	SWMBE	Local
# of Bids	4	1	1
# of Responsive Bids	4	1	1

Bidders	Price	Responsive?	Responsible?	% Sub	% SWMBE
Allan Integrated Control Systems, Inc. East Troy, WI 53120 (WBE)	\$1,499,642.00	Responsive	Responsible	43.0%	77.0%
Next Electric, LLC Waukesha, WI 53186	\$4,185,370.00	Responsive	Responsible	Not provided	Not provided
Symbiont Milwaukee, WI 53214	\$4,749,758.00	Responsive	Responsible	Not provided	Not provided
Integrated Process Solutions Fosston, MN 56542	\$5,940,944.00	Responsive	Responsible	Not provided	Not provided

SUBCONTRACTOR INFORMATION

Type	Subcontractor Name	Type of Work	%	Amount
MBE	Globetrotters Engineering Corp. Chicago, IL 60606	Control panel drawings	20.0%	\$300,000.00
NON-SWMBE	Staff Electric Co., Inc. Menomonee Falls, WI 53051	Electrical work	23.0%	\$344,885.00

ECONOMIC DEVELOPMENT ELEMENTS

Workforce Requirements

Sanitary Sewer Service Area (SSSA)

Employment: 20%

Target Area (TA) Employment: 10%

Apprentices Required: 2

Interns Required: 2

OUTREACH INFORMATION

The Procurement team performed the following outreach: advertised in the Daily Reporter, sent an e-mail notification to all registered firms in the Construction and Demolition categories, and sent targeted e-mails to SWMBE firms. The bid opportunity is also publicly accessible from the MMSD website and Quest CDN. Quest CDN also performs outreach to its users when a bid is posted.

S/W/MBE Planholders:

SOAP Engineering, Enhanced Automation, Engineering Specialists, EZSoft, Energenecs, Inc, Flygt A Xylem Brand, Allan Integrated Control Systems, Inc., MG Automation, Inc., Superior Engineering, LLC, HPI Energy Services, LLC

If no or low S/W/MBE participation, explain why:

NA

Additional Comments:

- (2) Apprentices shall be employed when journeymen are employed;
- (2) Interns, working 400 hours each, shall be employed from within the Target Area

AWARDEE INFORMATION

Company:	Allan Integrated Control Systems, Inc.
Contact Person:	Ted Zess
Phone Number:	(262) 642-7800
E-mail Address:	tzess@allan-ics.com

EEO DATA

2021 Beulah Avenue, East Troy,
Location: WI 53120

Total # of Employees 13

	<u>Total</u>	<u>%</u>
Minorities	0	0.0%
African American	0	0.0%
Asian	0	0.0%
Hispanic	0	0.0%
Native American	0	0.0%

	<u>Total</u>	<u>%</u>
Females	2	15.4%
African American	0	0.0%
Asian	0	0.0%
Hispanic	0	0.0%
Native American	0	0.0%

Labor Market Availability - Minorities 22.0%

Labor Market Availability - Females 49.0%

COMMISSION FILE NO: 21-028-3 **DATE INTRODUCED:** March 8, 2021

INTRODUCED BY: Executive Director (Signature on File in the Office of the Commission)

REFERRED BY COMMISSION CHAIRPERSON TO: Operations Committee

RELATING TO: Contract S01013D01, Engineering Services – South Shore Water Reclamation Facility Primary Clarification Upgrade

SUMMARY:

The Commission is requested to authorize the Executive Director to execute on behalf of the District Contract S01013D01, Engineering Services – South Shore Water Reclamation Facility (SSWRF) Primary Clarification Upgrade, with Black & Veatch, Inc., in an amount not to exceed \$1,619,093. Black & Veatch, Inc., was the highest scoring proposer through a qualifications-based selection method among five proposals received.

Primary clarification is a key unit process used to remove biological oxygen demand (BOD) and total suspended solids from the influent wastewater stream. The primary clarification system consists of:

- Sixteen 160-foot-long by 40-foot-wide by 10-foot-deep rectangular primary clarifiers.
- Sludge removal equipment, with each basin having two chain and flight sludge collectors (one longitudinal and one transverse). The chain and flight collectors also move scum to the scum removal system.
- Primary scum collection and pumping equipment.
- A control system.

The purpose of this project is to improve the reliability and performance of the primary clarifier system both in the near term and to meet future primary clarifier performance goals as outlined in the 2050 Facilities Plan (FP). The primary clarifiers originally went into service in 1968. Equipment has been replaced since then, with most equipment being installed nearly 20 years ago. This equipment is nearing the end of its useful life. The existing equipment has experienced warped scum beaches, warped and misaligned longitudinal and transverse collectors, and corroded drives.

ATTACHMENTS: **BACKGROUND** ☐ **KEY ISSUES** ☐ **RESOLUTION** ☒
FISCAL NOTE ☒ **S/W/MBE** ☒ **OTHER** ☐ _____

OP_Award_S01013D01_Primary_Clarifier_Rehab_legislative_file.docx
02-15-21

COMMITTEE ACTION: _____ **DATE:** _____

COMMISSION ACTION: _____ **DATE:** _____

SUMMARY (Cont'd)

Contract S01013D01, Engineering Services – South Shore Water Reclamation Facility Primary Clarification Upgrade

To ensure long term plant performance under projected future loadings, the FP evaluated ways to achieve plant performance goals. For the primary clarification process, the FP recommended using chemically enhanced primary treatment (CEPT) to achieve a desired 50% BOD removal rate. Changing to CEPT would result in the need to make modifications and operational changes to the existing system.

Under Contract S01013D01, the consultant will perform the following services, all related to the primary clarifier system:

- Project management
- Engineering evaluations, identifying and evaluating alternatives, and recommending system modifications, replacements, or improvements to achieve project goals.
- Designing the recommended modifications, replacements, or improvements, including replacement of the primary clarifier mechanisms.
- Preparing final plans and specifications.
- Bid and award services.
- Engineering services during construction.
- Developing operation and maintenance manuals, training, and start-up.
- Applications engineering.

After the design work is complete, the District will publicly bid the construction contract.

The duration for this contract is approximately 77 months.

RESOLUTION

Contract S01013D01, Engineering Services – South Shore Water Reclamation Facility
Primary Clarification Upgrade

RESOLVED, by the Milwaukee Metropolitan Sewerage Commission, that the Executive Director is authorized to execute Contract S01013D01, Engineering Services – South Shore Water Reclamation Facility Primary Clarification Upgrade, with Black & Veatch, Inc., in an amount not to exceed \$1,619,093.



Capital Budget Fiscal Note

Total Project Cost

RELATING TO:

Contract S01013D01, Engineering Services – South Shore Water Reclamation Facility
Primary Clarification Upgrade

Capital Project Number(s)

S01013

Impact of Requested Action on Total Project Cost:☐

Increase

☐

Decrease

☐

New Project

☒

No Change

Total Project Cost Analysis

Adopted 2021 Total Project Cost

Previously Approved Changes

Approved Total Project Cost

Requested Total Project Cost

Requested (Increase)/Decrease

Project Costs

\$15,361,345

\$0

\$15,361,345

n/a

\$0

Action to be taken to Long-Range Financing Plan to address Total Project Cost change

_____ Transfer from Allowance for Cost and Schedule Changes

_____ Transfer from another project (specify in comments)

_____ Delay Project(s) (specify in comments)

_____ Delete Project(s) (specify in comments)

_____ Other _____

_____ Transfer to Allowance for Cost and Schedule Changes

Comments

Budget Review by:

Theresa Zwieg

Date:

2/1/2021

Contract S01013D01, Engineering Services – South Shore Water Reclamation Facility Primary Clarification Upgrade



Procurement & S/W/MBE Summary Information

Contract # S01013D01

Cost Center: ENG

Engineering Services - South Shore Water Reclamation Facility Primary Clarification Upgrade

PROPOSAL SUMMARY

Proposal Receipt Date: 12/1/2020

	Total	SWMBE	Local	
# of Proposals	5	0	4	
# of Acceptable Proposals	2	0	2	

Proposals (listed by rank)	Negotiated Price	Acceptable?	% Sub	% SWMBE
	<i>Submitted Price</i>			
Black & Veatch Corp. Milwaukee, WI 53202	\$1,619,093.00 \$1,619,093.00	Acceptable	25.3%	25.3%
Arcadis U.S., Inc. Milwaukee, WI 53202	- \$1,757,918.00	Acceptable	39.1%	22.0%
Donohue & Associates, Inc. Milwaukee, WI 53202	- -	Unacceptable	-	-
Greeley and Hansen LLC Waukesha, IL 53186	- -	Unacceptable	-	-
Strand Associates, Inc. Milwaukee, WI 53202	- -	Unacceptable	-	-

Compensation packages for proposals rated "Conditionally Acceptable" and "Unacceptable" are not opened.

SUBCONSULTANT INFORMATION

Type	Subconsultant Name	Type of Work	%	Amount
MBE	Oneida Total Integrated Enterprises Milwaukee, WI 53226	CAD, structural, site/civil design, engineering support	15.0%	\$243,003.00
SBE	AES Engineering, Inc. Rubicon, WI 53078	Construction strategies/sequencing, plant O&M, training materials	1.3%	\$20,590.00
SBE	Automation Service & Design, Inc. Mequon, WI 53092	Electrical/I&C engineering support, applications engineering	5.5%	\$89,790.00

SBE	Indoor Air Quality Diagnostics Wauwatosa, WI 53226	Environmental testing, consulting	0.6%	\$9,880.00
SBE	M&M Environmental and Educational Services Milwaukee, WI 53221	Construction strategies/ sequencing, startup support, O&M manuals	1.3%	\$21,669.00
WBE	TWGraphics Milwaukee, WI 53202	CAD design services	1.6%	\$25,392.00

ECONOMIC DEVELOPMENT ELEMENTS

Local Office Preference? Y

Mentor Protégé? NA

OUTREACH INFORMATION

The Procurement team performed the following outreach: advertised in the Daily Reporter, sent an e-mail notification to all registered firms in the Professional Services category, and sent targeted e-mails to 82 SWMBE Design and Engineering Services firms. The proposal opportunity is also publicly accessible from the MMSD website and Bonfire, the portal used to post RFPs. Bonfire also performs outreach to its users when an RFP is posted.

S/W/MBE Document Takers:

AES Engineering
Applied Science, Inc.
Bloom Companies, LLC
Cathodic Protection Management, Inc.
Fusion Integrated Solutions, LLC
GESTRA Engineering, Inc.
Globetrotters Engineering Corporation
Integrated Process Solutions, Inc.
K. Singh & Associates, Inc.
Kapur and Assoc.
L&R Engineering Services, LLC
M & M Environmental and Educational Services LLC
Oneida Total Integrated Enterprises (OTIE)
P. A. Roeper & Associates, Inc
Superior Engineering - IL, LLC
Terra Engineering Group Ltd.
Webster Environmental Assoc.

If no or low S/W/MBE participation, explain why:

NA

Additional Comments:

NA

AWARDEE INFORMATION

Company:	Black & Veatch, Inc.
Contact Person:	Paul Boersma
Phone Number:	(414) 455-1606
E-mail Address:	BoersmaPM@bv.com

EEO DATA

225 E. Mason Street, Suite 801,
Location: Milwaukee, WI 53202

Total # of Employees 5920

	<u>Total</u>	<u>%</u>
Minorities	1,036	17.5%
African American	241	4.1%
Asian	469	7.9%
Hispanic	312	5.3%
Native American	14	0.2%

	<u>Total</u>	<u>%</u>
Females	1,654	27.9%
African American	94	1.6%
Asian	154	2.6%
Hispanic	88	1.5%
Native American	4	0.1%

Labor Market Availability - Minorities 22.0%

Labor Market Availability - Females 49.0%

PRIME PERFORMANCE HISTORY - S/W/MBE COMPLIANCE

Contract Title	Start Date	Percent Complete	Contract Value	Payments to Prime	Proposed SWMBE \$	Proposed SWMBE %	SWMBE Actuals \$	SWMBE Actuals %
J04060D01 - Eng Svcs for JIWRf Sludge Cake Conveyors Replacement	3/21/2018	69%	\$603,644.00	\$415,042.55	\$234,274.24	38.81%	\$91,228.99	22%
J06061D03 - JI WRF Milorganite Dryer Burner Upgrade	7/1/2015	90%	\$816,058.00	\$735,928.30	\$219,927.63	26.95%	\$194,084.71	26%
J06066P01 - JI Power Supply Risk Analysis	8/1/2014	100%	\$71,500.00	\$71,484.72	\$14,300.00	20.00%	\$7,900.00	11%
K01012D02 - Prep of FCC, NEPA, FAA and other Fed Docs	6/15/2015	98%	\$75,499.80	\$73,969.12	\$0.00	0.00%	\$0.00	0%
M03074P01 - Force Main Pipes Condition Assessment Master Plan	10/8/2013	94%	\$194,652.00	\$182,082.73	\$40,876.92	21.00%	\$19,680.02	11%
S04031D01-Engineering Service-SS WTR Reclamation Digester Gas Treatment System	1/1/2016	100%	\$706,894.00	\$706,894.00	\$213,764.75	30.24%	\$198,129.32	28%

COMMISSION FILE NO: 21-029-3 **DATE INTRODUCED:** March 8, 2021

INTRODUCED BY: Executive Director (Signature on File in the Office of the Commission)

REFERRED BY COMMISSION CHAIRPERSON TO: Operations Committee

RELATING TO: Change Order Request, Contract TS-2667, General On-Call Engineering Services – Water Reclamation Facilities, Restore the Executive Director's Original Delegated Authority, and Approve Changes in Total Project Cost, Project S02017

SUMMARY:

The Commission is requested to authorize the Executive Director to execute a change order to Contract TS-2667, General On-Call Engineering Services – Water Reclamation Facilities (WRF's), with Donohue & Associates, Inc., (Donohue) in an amount not to exceed \$41,000 and to restore the Executive Director's original delegated authority.

Further, the Commission is requested to increase the total project cost (TPC) for Project S02017, Process Air Header Improvements, by \$286,500 for an amended TPC of \$536,500 and to make a corresponding change to the TPC for Project M99001, Allowance for Cost and Schedule Changes

District staff utilizes Contract TS-2667 for smaller scale engineering services related to the District's WRF's. Services may be on small capital projects, capital repair and replacement projects, or general technical support related to other capital projects or operational issues. On-call contract TS-2667 also provides the District means to cost effectively and quickly respond to WRF engineering needs.

The District executed contract TS-2667 in December 2019 in the amount of \$600,000. The District has subsequently issued 12 task orders for various engineering needs at the WRF's.

The requested change order is for engineering services related to Project S02017, Process Air Header Improvements.

ATTACHMENTS: **BACKGROUND** ☐ **KEY ISSUES** ☐ **RESOLUTION** ☒
FISCAL NOTE ☒ **S/W/MBE** ☐ **OTHER** ☐ _____

OP_Change_Order_TS2667_TPC_Change_S02017_legislative_file.docx
02-17-21

COMMITTEE ACTION: _____ **DATE:** _____

COMMISSION ACTION: _____ **DATE:** _____

SUMMARY (Cont'd)

Change Order Request, Contract TS-2667, General On-Call Engineering Services – Water Reclamation Facilities, Restore the Executive Director's Original Delegated Authority, and Approve Changes in Total Project Cost, Project S02017

South Shore Water Reclamation Facility (SSWRF) uses large quantities of compressed air to provide oxygen to the secondary treatment process. Compressed air is conveyed from blowers via 30-inch blower discharge lines into an underground 90-inch steel pipeline (the process air header). The process air header then conveys compressed air approximately 1,730 feet from the Blower Generator Building to the Aeration Buildings. Within the Aeration Building, pipelines branch off from the 90-inch air header, ultimately to serve individual aeration basins. This conveyance system went into service in approximately 1970.

A 2016 internal inspection of the 90-inch pipeline indicated areas where some corrosion has occurred. There have not been any inspections of the 30-inch blower discharge lines.

In January 2020, one of the 30-inch blower discharge lines developed a leak, resulting in the need to shut down all process air to complete the repair. SSWRF can only operate for six to 12 hours without a functioning aeration system before risking loss of the biological treatment process. It can take up to a month to restore the biological treatment process and can result in a risk of not meeting permit limits. It is critical that the District have a fully reliable process air delivery system.

Based on the January 2020 experience and the age of the entire air system, staff suspects that there may be other areas with significant corrosion and increased risk of failures and leaks. Given the critical nature of the blower discharge and process header lines and after the January 2020 leak, the District:

- Created Project S02017, Process Air Header Improvements, with a TPC of \$250,000 and
- Authorized a task order under the TS-2667 On-Call Engineering contract to perform engineering services for Project S02017.

SUMMARY (Cont'd)

Change Order Request, Contract TS-2667, General On-Call Engineering Services – Water Reclamation Facilities, Restore the Executive Director's Original Delegated Authority, and Approve Changes in Total Project Cost, Project S02017

The engineering services authorized under that task order included:

- Identifying ways to replace the 30-inch branch header discharge lines;
- Evaluating means and methods to obtain a condition assessment of the 90-inch air header;
- Evaluating ways to rehabilitate or replace the 90-inch air header;
- Developing plans and specs to provide access to the 90-inch air header near where branch air discharge lines connect;
- Conducting one internal inspection where the branch discharge lines connect to the 90-inch air header; and
- Developing plans and specifications to provide access for external inspections at different locations along the 90-inch process air header.

A logical extension of the work performed to date on Project S02017 under the TS-2667 Contract is to add the external inspection and an additional internal inspection of the 90-inch air header. As there is no remaining funding left on Contract TS-2667, staff is now requesting a change order in an amount not to exceed \$41,000 to perform these inspections.

CONTRACT COST CHANGES

	AMOUNT	PERCENTAGE INCREASE OVER ORIGINAL CONTRACT	AUTHORIZED BY	SWMBE
Original Contract	\$600,000.00		Commission	23.3%
Previous Change Orders	\$60,000.00	10.0%	Executive Director	20.0%
Requested Change Order	\$41,000.00	6.8%	Request of Commission	20.0%
Total Change Orders	\$101,000.00	16.8%		20.0%
TOTAL	\$701,000.00			22.8%

SUMMARY (Cont'd)

Change Order Request, Contract TS-2667, General On-Call Engineering Services – Water Reclamation Facilities, Restore the Executive Director's Original Delegated Authority, and Approve Changes in Total Project Cost, Project S02017

For engineering service contracts greater than or equal to \$500,000, the Commission has delegated to the Executive Director the authority to make changes up to \$200,000 or 10 percent of the original contract price, whichever is less. For this contract, a limit of \$60,000 prevails. To date, the Executive Director has utilized \$60,000 of this authority, leaving a balance of \$0. The request to restore the Executive Director's authority is in case any additional engineering services are needed before the District awards and executes a new on-call engineering services contract for the WRF's.

Project S02017, Process Air Header Improvements, was created in March 2020 by Commission action with a TPC of \$250,000. The original scope of the project was limited to only performing preliminary engineering. District staff has now identified the costs associated with performing the internal and external inspections and requests to increase the TPC by those costs, which are estimated at \$286,500. These costs include constructing the process air header access, consultant inspection costs, and District labor costs for management, engineering, and construction administration.

RESOLUTION

Change Order Request, Contract TS-2667, General On-Call Engineering Services – Water Reclamation Facilities, Restore the Executive Director's Original Delegated Authority, and Approve Changes in Total Project Cost, Project S02017

RESOLVED, by the Milwaukee Metropolitan Sewerage Commission, that the Executive Director is authorized to execute a change order to Contract TS-2667, General On-Call Engineering Services – Water Reclamation Facilities, with Donohue & Associates, Inc., in an amount not to exceed \$41,000, and that the Executive Director's original delegated authority is restored.

FURTHER RESOLVED, by the Milwaukee Metropolitan Sewerage Commission, that the total project cost for Project S02017, Process Air Header Improvements, is increased by \$286,500 for an amended total project cost of \$536,500, and that a corresponding change is made to the total project cost for Project M99001, Allowance for Cost and Schedule Changes.



Capital Budget Fiscal Note

Total Project Cost

RELATING TO:

Change Order Request, Contract TS-2667, General On-Call Engineering Services – Water Reclamation Facilities, Restore the Executive Director's Original Delegated Authority, and Approve Changes in Total Project Cost, Project S02017

Capital Project Number(s)

S02017

Impact of Requested Action on Total Project Cost:

☒ Increase ☐ Decrease ☐ New Project ☐ No Change

Total Project Cost Analysis

Adopted 2021 Total Project Cost
Previously Approved Changes
Approved Total Project Cost
Requested Total Project Cost
Requested (Increase)/Decrease

Project Costs

\$250,000
\$0
\$250,000
\$536,500
(\$286,500)

Action to be taken to Long-Range Financing Plan to address Total Project Cost change

_____ Transfer from Allowance for Cost and Schedule Changes
_____ x Transfer from another project (specify in comments)
_____ Delay Project(s) (specify in comments)
_____ Delete Project(s) (specify in comments)
_____ Other _____
_____ Transfer to Allowance for Cost and Schedule Changes

Comments

The budget for engineering consultant expense, construction contractor expense, and District labor related to the direct inspections was not included in the original project scope or TPC. Staff requests to increase the TPC accordingly and transfer from S99001.

Budget Review by:

Theresa Zwieg

Date:

2/1/2021

COMMISSION FILE NO: 21-030-3 **DATE INTRODUCED:** March 8, 2021

INTRODUCED BY: Executive Director (Signature on File in the Office of the Commission)

REFERRED BY COMMISSION CHAIRPERSON TO: Operations Committee

RELATING TO: Contract C05055D01, Engineering Services – North 35th Street and West Roosevelt Drive Improvements Project

SUMMARY:

The Commission is requested to authorize the Executive Director to execute on behalf of the District Contract C05055D01, Engineering Services – North 35th Street and West Roosevelt Drive Improvements Project, with Oneida Total Integrated Enterprises, LLC, (OTIE) in an amount not to exceed \$812,430. OTIE was the highest scoring proposer through a qualifications-based selection method among three proposals received.

One of the District's Integrated Watershed Management Goals, as outlined in the District's 2035 Vision, is to "achieve, to the extent feasible, zero sanitary sewer overflows". In 2020, the District completed a planning level evaluation of the Metropolitan Interceptor System (MIS) that contributes to a sanitary sewer overflow (SSO) location known as Bypass Site 0503 (BS0503). BS0503 is near N. 35th Street and W. Roosevelt Drive in the City of Milwaukee.

The goal of the evaluation was to identify ways to reduce or eliminate SSO's that can occur at this location. SSO's have occurred at this location about ten times over the past 20 years. BS0503 is a bypass pumping station, which, when active, pumps the SSO to two storm sewer box culverts. These box culverts convey this SSO and stormwater flow north in 35th Street, where it discharges into Lincoln Creek at Congress Street.

Under the 30th Street Corridor Flood Management efforts, the District plans to construct a wet weather storage basin that will collect stormwater from the same storm sewer box culverts to which BS0503 currently discharges. The District desires to eliminate the risk of any SSO discharging from BS0503 into this planned wet weather storage basin.

ATTACHMENTS: **BACKGROUND** ☐ **KEY ISSUES** ☐ **RESOLUTION** ☒

FISCAL NOTE ☒ **S/W/MBE** ☒ **OTHER** ☐ _____

*OP_Award_C05055D01_Roosevelt_Drive_Improvements_legislative_file.docx
02-08-21*

COMMITTEE ACTION: _____ **DATE:** _____

COMMISSION ACTION: _____ **DATE:** _____

SUMMARY (Cont'd)

Contract C05055D01, Engineering Services – North 35th Street and West Roosevelt Drive Improvements Project

To eliminate the overflow risk at BS0503, the planning report recommended that the District design and construct a new 48-inch MIS in W. Roosevelt Drive. This new MIS will provide hydraulic relief to an existing 42-inch MIS in W. Roosevelt Drive by redirecting flow away from BS0503 to an existing 96-inch MIS near N. 51st Street.

Proposed Contract C05055D01 will begin with the recommendations from the planning report and ultimately develop a set of bid documents to construct the new MIS. Under Contract C05055D01, the consultant will perform the following services:

- Project management.
- Geotechnical investigation.
- Alternatives and engineering analysis.
- Hydraulic modeling.
- Design the following elements:
 - New tunneled MIS.
 - Structures to connect the new MIS to the existing MIS.
 - Abandonment of the existing MIS.
 - Modifications to the City of Milwaukee sanitary sewer system.
 - Abandonment of BS0503.
- Prepare final plans and specifications.
- Bid and award services.
- Engineering services during construction.
- Developing operation and maintenance manual revisions.
- Applications engineering support.

After the design work is complete, the District will publicly bid the construction contract.

The duration for this contract is approximately 42 months.

RESOLUTION

Contract C05055D01, Engineering Services – North 35th Street and West Roosevelt Drive Improvements Project

RESOLVED, by the Milwaukee Metropolitan Sewerage Commission, that the Executive Director is authorized to execute Contract C05055D01, Engineering Services – North 35th Street and West Roosevelt Drive Improvements Project, with Oneida Total Integrated Enterprises, LLC, in an amount not to exceed \$812,430.



Capital Budget Fiscal Note

Total Project Cost

RELATING TO:

Contract C05055D01, Engineering Services – North 35th Street and West Roosevelt Drive Improvements Project

Capital Project Number(s)

C05055

Impact of Requested Action on Total Project Cost:

☐

Increase

☐

Decrease

☐

New Project

☒

No Change

Total Project Cost Analysis

Adopted 2021 Total Project Cost

Previously Approved Changes

Approved Total Project Cost

Requested Total Project Cost

Requested (Increase)/Decrease

Project Costs

\$14,034,431

\$0

\$14,034,431

n/a

\$0

Action to be taken to Long-Range Financing Plan to address Total Project Cost change

_____ Transfer from Allowance for Cost and Schedule Changes

_____ Transfer from another project (specify in comments)

_____ Delay Project(s) (specify in comments)

_____ Delete Project(s) (specify in comments)

_____ Other _____

_____ Transfer to Allowance for Cost and Schedule Changes

Comments

Budget Review by:

Theresa Zwieg

Date:

2/1/2021

Contract C05055D01, Engineering Services – North 35th Street and West Roosevelt Drive Improvements Project



Procurement & S/W/MBE Summary Information

Contract # C05055D01 **Cost Center:** ENG

Engineering Services - North 35th Street and West Roosevelt Drive Improvements Project

PROPOSAL SUMMARY

Proposal Receipt Date: 12/14/2020

	Total	SWMBE	Local
# of Proposals	3	1	3
# of Acceptable Proposals	2	1	2

Proposals (listed by rank)	Negotiated Price	Acceptable?	% Sub	% SWMBE
	<i>Submitted Price</i>			
Oneida Total Integrated Enterprises Milwaukee, WI 53226 (MBE)	\$812,430.00 \$772,358.00	Acceptable	52.8%	81.3%
Symbiont Milwaukee, WI 53214	- \$869,535.00	Acceptable	41.1%	26.7%
Stantec Consulting Services Inc. Mequon, WI 53092	- -	Unacceptable	-	-

Compensation packages for proposals rated "Conditionally Acceptable" and "Unacceptable" are not opened.

SUBCONSULTANT INFORMATION

Type	Subconsultant Name	Type of Work	%	Amount
MBE	K. Singh & Associates Wauwatosa, WI 53222	Geotechnical investigations, engineering, environmental, asbestos testing	21.0%	\$170,610.30
MBE	Oneida Engineering Services Milwaukee, WI 53226	Engineering consulting	2.4%	\$19,498.32
SBE	Automation Service & Design, Inc. Mequon, WI 53092	Electrical engineering, application engineering	10.7%	\$86,930.01
Non-SWMBE	Brown And Caldwell Milwaukee, WI 53202	Engineering consulting	18.7%	\$151,924.41

ECONOMIC DEVELOPMENT ELEMENTS

Local Office Preference? Y

Mentor Protégé? NA

OUTREACH INFORMATION

The Procurement team performed the following outreach: advertised in the Daily Reporter, sent an e-mail notification to all registered firms in the Engineering/General services categories, and sent targeted e-mails to SWMBE Engineering firms. The proposal opportunity is also sent to various diverse business chambers and councils and publicly accessible from the MMSD website and Bonfire, the portal used to post RFPs. Bonfire also performs outreach to its users when an RFP is posted.

S/W/MBE Document Takers:

Applied Science, Inc.
Bay Ridge Consulting
DAAR Engineering, Inc.
Fusion Integrated Solutions, LLC
GESTRA Engineering, Inc.
Globetrotters Engineering Corporation
Himalayan Consultants, LLC
K. Singh & Associates, Inc.
Kapur and Assoc.
M Squared Engineering
NuGen Companies, LLC
Oneida Total Integrated Enterprises
OTIE
Terra Engineering Group Ltd.
Water365, LLC

If no or low S/W/MBE participation, explain why:

NA

Additional Comments:

NA

AWARDEE INFORMATION

Company:	<u>Oneida Total Integrated Enterprise (OTIE)</u>
Contact Person:	<u>Rich Blauvelt</u>
Phone Number:	<u>(414) 607-6792</u>
E-mail Address:	<u>rblauvelt@otie.com</u>

EEO DATA

1033 North Mayfair Road, Suite
Location: 200, Milwaukee, WI 53226

Total # of Employees 138

	<u>Total</u>	<u>%</u>
Minorities	19	13.8%
Asian	8	5.8%
Black or African American	3	2.2%
Hispanic or Latino	8	5.8%
Native American	0	0.0%
Other Minority	0	0.0%

	<u>Total</u>	<u>%</u>
Females	49	35.5%
Asian	4	2.9%
Black or African American	1	0.7%
Hispanic or Latino	2	1.4%
Native American	0	0.0%
Other Minority	0	0.0%

Labor Market Availability - Minorities 22.0%

Labor Market Availability - Females 49.0%

PRIME PERFORMANCE HISTORY - S/W/MBE COMPLIANCE

Contract Title	Start Date	Percent Complete	Contract Value	Payments to Prime	Proposed SWMBE \$	Proposed SWMBE %	SWMBE Actual \$	SWMBE Actuals %
C02007D02 - Franklin/Muskego Interceptor Rehabilitation Project II	6/1/2012	84%	\$92,092.00	\$77,511.57	\$92,092.00	100.00%	\$77,511.57	100%
C06021D01 South 27th St. MIS Rehab	6/1/2015	31%	\$301,918.00	\$95,013.38	\$301,918.00	100.00%	\$95,013.38	100%
S06019D01, SS WRF Flushing Water (W3) Pump Improvements	4/20/2015	96%	\$207,150.00	\$198,016.68	\$207,150.00	100.00%	\$198,016.68	100%
S06022D01, SS WRF Building 326 Site Improvements Project	4/1/2015	98%	\$82,654.00	\$80,808.34	\$82,654.00	100.00%	\$80,808.34	100%
TS-2566 Sewer Rehab - Various Locations	2/25/2013	100%	\$232,575.00	\$203,732.70	\$232,575.00	100.00%	\$203,732.70	100%
TS-2616, General On-Call Engineering Services for Watercourse Facilities	4/6/2015	100%	\$50,000.00	\$45,071.34	\$50,000.00	100.00%	\$45,071.34	100%
W40016D01 - Eng Svcs - KK River Sewer Mods	3/9/2019	80%	\$242,910.00	\$194,868.14	\$203,242.80	83.67%	\$175,794.64	90%

COMMISSION FILE NO: 21-031-3 **DATE INTRODUCED:** March 8, 2021

INTRODUCED BY: Executive Director (Signature on File in the Office of the Commission)

REFERRED BY COMMISSION CHAIRPERSON TO: Operations Committee

RELATING TO: Contract TS-2682, On-Call Construction Services for Sewer Repair and Rehabilitation Projects

SUMMARY:

The Commission is requested to authorize the Executive Director to execute on behalf of the District Contract TS-2682, On-Call Construction Services for Sewer Repair and Rehabilitation Projects, with Mid City Plumbing & Heating, Inc., (Mid City) in an amount not to exceed \$500,000. Mid City was the lowest responsible, responsive bidder among four bids received.

The District has a recurring need to quickly perform less complex and smaller scale contracts within the District's Conveyance system. The work often consists of lining pipes, manholes, or joint repairs. While such work may be needed quickly, it is not emergency work, and there may be significant time and costs associated with putting together a complete bid package.

The requested on-call contract will provide the District means to quickly and cost effectively respond to such needs in the Conveyance system.

As a need arises, staff will develop a scope of services for an on-call task order and, using rates established in the proposed contract, will develop a not-to-exceed cost for each task order. Once the scope and costs are finalized with the contractor, staff would authorize the task order.

In general, staff anticipates the costs for each task order to range from \$15,000 to \$75,000. Services provided under this contract may be funded from either the Capital Budget or the Operations and Maintenance budget.

Staff anticipates that this contract will last up to three years.

ATTACHMENTS: **BACKGROUND** ☐ **KEY ISSUES** ☐ **RESOLUTION** ☒

FISCAL NOTE ☒ **S/W/MBE** ☒ **OTHER** ☐ _____

OP_Award_TS 2682_on Call Construction- Conveyance_legislative_file.docx
02-04-21

COMMITTEE ACTION: _____ **DATE:** _____

COMMISSION ACTION: _____ **DATE:** _____

RESOLUTION

Contract TS-2682, On-Call Construction Services for Sewer Repair and Rehabilitation Projects

RESOLVED, by the Milwaukee Metropolitan Sewerage Commission, that the Executive Director is authorized to execute Contract TS-2682, On-Call Construction Services for the Sewer Repair and Rehabilitation Projects, with Mid City Plumbing & Heating, Inc., in an amount not to exceed \$500,000.



Capital Budget Fiscal Note

Total Project Cost

RELATING TO:

Contract TS-2682, On-Call Construction Services for Sewer Repair and Rehabilitation Projects

Capital Project Number(s)

Various

Impact of Requested Action on Total Project Cost:☐

Increase

☐

Decrease

☐

New Project

☒

No Change

Total Project Cost Analysis

Adopted 2021 Total Project Cost

Previously Approved Changes

Approved Total Project Cost

Requested Total Project Cost

Requested (Increase)/Decrease

Project Costs**Various**

_____ \$0

_____ \$0

_____ n/a

_____ \$0

Action to be taken to Long-Range Financing Plan to address Total Project Cost change

_____ Transfer from Allowance for Cost and Schedule Changes

_____ Transfer from another project (specify in comments)

_____ Delay Project(s) (specify in comments)

_____ Delete Project(s) (specify in comments)

_____ Other _____

_____ Transfer to Allowance for Cost and Schedule Changes

Comments

Services provided under this contract may be funded from either the capital budget or the operations and maintenance budget and will be charged as individual task orders to various capital projects and OM projects. It is anticipated 90% of the contract will be used on capital projects.

Budget Review by:

Theresa Zwieg

Date:

2/1/2021



O&M Budget Fiscal Note

RELATING TO:

Contract TS-2682, On-Call Construction Services for Sewer Repair and Rehabilitation Projects

Cost Center: ENG _____	Line Item: 645 _____																		
Line Item Impact <table style="width: 100%; border-collapse: collapse;"> <tr> <td style="width: 60%;">2021 Original Budget</td> <td style="width: 10%; text-align: center;">\$</td> <td style="width: 30%; text-align: right;">306,478</td> </tr> <tr> <td>Carryovers or Transfers</td> <td></td> <td style="text-align: right;">\$0</td> </tr> <tr> <td>Adjusted Budget</td> <td></td> <td style="text-align: right;">\$306,478</td> </tr> <tr> <td>Estimated Annual Expenditure including Request</td> <td></td> <td style="text-align: right;">\$306,478</td> </tr> <tr> <td>Anticipated Year End Balance</td> <td></td> <td style="text-align: right;">\$0</td> </tr> <tr> <td>Actual Year to Date Expenditures Through</td> <td></td> <td style="text-align: right;">NA</td> </tr> </table> <p style="margin-top: 10px;">For unfavorable Year End Balance, identify funding source:</p> <div style="margin-left: 40px;"> <input type="checkbox"/> Absorbed within the Division <input type="checkbox"/> Other Division <input type="checkbox"/> Unallocated Reserve </div>		2021 Original Budget	\$	306,478	Carryovers or Transfers		\$0	Adjusted Budget		\$306,478	Estimated Annual Expenditure including Request		\$306,478	Anticipated Year End Balance		\$0	Actual Year to Date Expenditures Through		NA
2021 Original Budget	\$	306,478																	
Carryovers or Transfers		\$0																	
Adjusted Budget		\$306,478																	
Estimated Annual Expenditure including Request		\$306,478																	
Anticipated Year End Balance		\$0																	
Actual Year to Date Expenditures Through		NA																	
<table style="width: 100%; border-collapse: collapse;"> <tr> <th style="width: 35%; text-align: left;">Anticipated Expenditure Timing</th> <th style="width: 15%; text-align: center;">Requested Expenditures</th> <th style="width: 15%; text-align: center;">Anticipated Savings/Revenues</th> <th style="width: 35%; text-align: center;">Net Fiscal Impact</th> </tr> <tr> <td>Current Year (2021)</td> <td style="text-align: right;">\$25,000</td> <td style="text-align: right;">\$0</td> <td style="text-align: right;">\$25,000</td> </tr> <tr> <td>Subsequent</td> <td style="text-align: right;">\$25,000</td> <td style="text-align: right;">\$0</td> <td style="text-align: right;">\$25,000</td> </tr> <tr> <td>Total Cost</td> <td style="text-align: right;">\$50,000</td> <td style="text-align: right;">\$0</td> <td style="text-align: right;">\$50,000</td> </tr> </table>			Anticipated Expenditure Timing	Requested Expenditures	Anticipated Savings/Revenues	Net Fiscal Impact	Current Year (2021)	\$25,000	\$0	\$25,000	Subsequent	\$25,000	\$0	\$25,000	Total Cost	\$50,000	\$0	\$50,000	
Anticipated Expenditure Timing	Requested Expenditures	Anticipated Savings/Revenues	Net Fiscal Impact																
Current Year (2021)	\$25,000	\$0	\$25,000																
Subsequent	\$25,000	\$0	\$25,000																
Total Cost	\$50,000	\$0	\$50,000																

Comments: Services provided under this contract may be funded from either the capital budget or the operations and maintenance budget. 10% of this contract is anticipated to be used for OM projects.

Budget Review by:

Theresa Zwieg _____

Date

2/1/2021

Contract TS-2682, On-Call Construction Services for Sewer Repair and Rehabilitation Projects**Procurement & S/W/MBE Summary Information****Contract #** TS-2682**Cost Center:** ENG**On-Call Construction Services for Sewer Repair and Rehabilitation Projects****BID SUMMARY**Bid Opening Date: 1/20/2021

	Total	SWMBE	Local
# of Bids	4	1	3
# of Responsive Bids	4	1	3

Bidders	Award Amount	Responsive?	Responsible?	% Sub	% SWMBE
	<i>Submitted Bid Total</i>				
Mid City Corporation Butler, WI 53007 (SBE)	\$500,000.00 \$139,723.63	Responsive	Responsible	TBD	20.0%
Five Star Energy Services, LLC West Bend, WI 53095	<i>n/a</i> \$151,417.88				
Grunau Company, Inc. Oak Creek, WI 53154	<i>n/a</i> \$159,946.63	Responsive	Responsible	TBD	20.0%
Super Excavators, Inc. Menomonee Falls, WI 53051	<i>n/a</i> \$256,841.25				

*Submitted Bid Total is based on a matrix of labor, equipment, and subcontractor rates and estimated quantities. Submitted Bid Total was utilized for determining the lowest bidder and establishing rates of payment. The Award Amount is based on staff's expectation of contract needs for up to three years. □

SUBCONTRACTOR INFORMATION

Type	Subcontractor Name	Type of Work	%	Amount
Non-SWMBE	Visu-Sewer, Inc. Pewaukee, WI 53072	Televising services	TBD	TBD

ECONOMIC DEVELOPMENT ELEMENTSWorkforce Requirements

Sanitary Sewer Service Area (SSSA)

Employment: 45%Target Area (TA) Employment: 20%# Apprentices Required: 0

OUTREACH INFORMATION

The Procurement team performed the following outreach: advertised in the Daily Reporter, sent an e-mail notification to all registered firms in the general construction category, sent targeted e-mails to potential prime bidders, sent targeted e-mails to SWMBE firms in construction services, and notified the various local chambers of commerce. The bid opportunity is also publicly accessible from the MMSD website and Quest CDN. Quest CDN also performs outreach to its users when a bid is posted.

S/W/MBE Planholders:

Mid City Corporation

If no or low S/W/MBE participation, explain why:

NA

Additional Comments:

The prime will meet or exceed the District's SWMBE participation goal of 20%. However, due to the nature of this contract, it is unknown at this time the exact dollar participation for each sub-consultant firm.□

AWARDEE INFORMATION

Company:	Mid City Corporation
Contact Person:	Tom Zoulek
Phone Number:	(262) 781-5940
E-mail Address:	estimating@midcitycorp.us

EEO DATA

12930 West Custer Avenue			Total # of Employees		
Location: Butler, WI 53007			65		
	Total	%		Total	%
Minorities	4	6.2%	Females	4	6.2%
African American	2	3.1%	African American	1	1.5%
Asian	0	0.0%	Asian	0	0.0%
Hispanic	3	4.6%	Hispanic	1	1.5%
Native American	1	1.5%	Native American	0	0.0%
Labor Market Availability - Minorities			Labor Market Availability - Females		
22.0%			49.0%		

COMMISSION FILE NO: 21-032-3 **DATE INTRODUCED:** March 8, 2021

INTRODUCED BY: Executive Director (Signature on File in the Office of the Commission)

REFERRED BY COMMISSION CHAIRPERSON TO: Operations Committee

RELATING TO: Contract TS-2683, On-Call Levee System Engineering and Accreditation Services, Project W20033

SUMMARY:

The Commission is requested to authorize the Executive Director to execute on behalf of the District Contract TS-2683, On-Call Levee System Engineering and Accreditation Services, Project W20033, with Arcadis U.S., Inc., (Arcadis) in an amount not to exceed \$2,500,000. Arcadis was the highest scoring proposer, through a qualifications-based selection method, among three proposals received.

Over the past 20 years, the District has been implementing the Menomonee River Watercourse Management Plan (MRWMP). The plan has identified 372 structures in the floodplain, of which, after District constructed improvements (totaling \$235 Million to date), 108 structures remain. Improvements include the County Grounds floodwater storage facility; concrete channel removal, channel widening, and stream restoration projects on Underwood Creek and the Menomonee River; and a floodwall and levee system adjacent to Hart Park. A remaining key element of this overall plan is the Western Milwaukee Phase 2B project. This project will design and construct additional levee and floodwalls along the Menomonee River immediately downstream of the existing Hart Park levee/floodwall system.

The Hart Park and Western Milwaukee levee/floodwall systems work together as a system and were constructed as a series of projects starting in 2007. The final levee/floodwall segment (Phase 2B) is under final design with construction estimated to be complete by the end of 2022.

ATTACHMENTS: BACKGROUND ☐ KEY ISSUES ☐ RESOLUTION ☒
FISCAL NOTE ☒ S/W/MBE ☒ OTHER ☐ _____

OP_On-Call_Levee_Accrediation_W20033_legislative_file.docx
02-11-21

COMMITTEE ACTION: _____ **DATE:** _____

COMMISSION ACTION: _____ **DATE:** _____

SUMMARY (Cont'd)

Contract TS-2683, On-Call Levee System Engineering and Accreditation Services,
Project W20033

One of the primary goals of the MRWMP is that structures protected by the levee system and currently in the Federal Emergency Management Agency (FEMA) regulatory floodplain will no longer be in that floodplain. Once a structure is out of this regulatory floodplain, not only is the structure at reduced risk of flooding, but the owner of a structure will no longer have a requirement to obtain flood insurance. The owner can still obtain flood insurance, but, as flood risks are reduced, flood insurance rates will also be reduced.

The Cities of Milwaukee and Wauwatosa, under FEMA regulations, are the local agencies responsible for administering and managing local floodplains. For structures to be removed from the regulatory floodplain, the Cities, in conjunction with the District, must develop and submit applications and supporting technical documentation to FEMA that demonstrate that the District's flood management efforts meet all regulatory requirements. The documentation package is called a Letter of Map Revision (LOMR) application. Part of this documentation includes demonstrating meeting FEMA levee requirements.

Once the Western Milwaukee Phase 2B construction is completed at the end of 2022, the District and Cities will assemble and submit a LOMR application, including the levee accreditation information, to FEMA. FEMA will not review the LOMR application until all construction is complete and all documentation, including the levee accreditation information, are submitted. FEMA will then review the LOMR and revisions may be necessary, before ultimately the LOMR goes into effect. Due to the complexity of the MRWMP, staff anticipates that it will take three years before FEMA approves the LOMR application and the floodplain maps are formally updated.

The District is currently evaluating and finalizing the improvements and steps necessary to have the levee accredited. Following are the general actions that need to occur:

- Construct embankment protection measures;
- Raise existing levees in four locations;
- Construct several storm sewer closures, including emergency closures;
- Repair approximately 50 sanitary and storm sewer segment defects;
- Abandon approximately 10 sanitary or storm sewer segments;
- Develop a comprehensive levee operation and maintenance (O&M) plan; and
- Develop an emergency preparedness plan.

SUMMARY (Cont'd)

Contract TS-2683, On-Call Levee System Engineering and Accreditation Services,
Project W20033

To meet the target of performing all work and completing the levee accreditation information by the end of 2022, staff requests authorization of this on-call engineering services contract. This contract will provide staff the ability to move immediately into engineering and final design after finalizing the specific actions needed to have the levee accredited. After final design is complete, the District will publicly bid and award multiple construction packages to complete necessary levee accreditation improvements.

This on-call levee accreditation contract will provide all remaining professional services necessary to develop the levee accreditation information. District will develop individual task orders and negotiate a final scope and fee with the consultant. Task order services will include the following type of tasks:

- Levee and floodwall design;
- River and storm sewer hydraulic modeling;
- Design storm sewer primary/secondary/emergency closure devices;
- Design storm and sanitary sewer repairs and rehabilitations;
- Design embankment protection measures;
- Address site environmental issues to meet WDNR standards;
- Develop the levee operation and maintenance plan;
- Develop the levee emergency preparedness plan;
- Inspect levee construction for compliance with technical requirements;
- Prepare FEMA LOMR/levee system accreditation information; and
- Provide District additional technical support relating to the levee as needed.

In addition to the Hart Park and Western Milwaukee levee system, the District also has the Valley Park levee system downstream along the Menomonee River. The Valley Park levee system was constructed in approximately 2000 and accredited by FEMA in 2006. Since 2006, FEMA has added the requirement to have an Emergency Preparedness Plan for levee systems. While accredited, the District desires that this levee accreditation contract also evaluate the Valley Park levee to determine if it also meets current levee accreditation requirements. This contract will also perform that evaluation and perform any necessary engineering services to ensure that the Valley Park levee also remains accredited.

Staff anticipates this contract to last three years.

RESOLUTION

Contract TS-2683, On-Call Levee System Engineering and Accreditation Services,
Project W20033

RESOLVED, by the Milwaukee Metropolitan Sewerage Commission, that the Executive Director is authorized to execute Contract TS-2683, On-Call Levee System Engineering and Accreditation Services, Project W20033, with Arcadis U.S., Inc., in an amount not to exceed \$2,500,000.



Capital Budget Fiscal Note Total Project Cost

RELATING TO:

Contract TS-2683, On-Call Levee System Engineering and Accreditation Services, Project W20033

Capital Project Number(s)

W20033

Impact of Requested Action on Total Project Cost:☐

Increase

☐

Decrease

☐

New Project

☒

No Change

Total Project Cost Analysis**Project Costs**

Adopted 2021 Total Project Cost

\$3,595,000

Previously Approved Changes

\$0

Approved Total Project Cost

\$3,595,000

Requested Total Project Cost

n/a

Requested (Increase)/Decrease

\$0

Action to be taken to Long-Range Financing Plan to address Total Project Cost change

_____ Transfer from Allowance for Cost and Schedule Changes

_____ Transfer from another project (specify in comments)

_____ Delay Project(s) (specify in comments)

_____ Delete Project(s) (specify in comments)

_____ Other _____

_____ Transfer to Allowance for Cost and Schedule Changes

Comments

Budget Review by:

Theresa Zwieg

Date:

2/11/2021

Contract TS-2683, On-Call Levee System Engineering and Accreditation Services, Project W20033



Procurement & S/W/MBE Summary Information

Contract # TS-2683 **Cost Center:** ENG

On-Call Levee System Engineering and Accreditation Services, Project W20033

PROPOSAL SUMMARY

Proposal Receipt Date: 1/19/2021

	Total	SWMBE	Local
# of Proposals	3	0	3
# of Acceptable Proposals	2	0	2

Proposals (listed by rank)	Negotiated Price	Acceptable?	% Sub	% SWMBE
	Submitted Price			
Arcadis U.S., Inc. Milwaukee, WI 53202	\$2,500,000.00 <i>n/a</i>	Acceptable	TBD	20.0%
Stantec Consulting Services Inc. Mequon, WI 53092	n/a <i>n/a</i>	Acceptable	20.0%	20.0%
Geosyntec Consultants Milwaukee, WI 53202	n/a <i>n/a</i>	Unacceptable	20.0%	20.0%

Compensation packages for proposals rated "Conditionally Acceptable" and "Unacceptable" are not opened.

SUBCONSULTANT INFORMATION

Type	Subconsultant Name	Type of Work	%	Amount
MBE	Gestra Engineering, Inc. Milwaukee, WI 53207	Engineering	TBD	TBD
MBE	KSingh & Associates, Inc. Wauwatosa, WI 53207	Levee/floodwall design	TBD	TBD
MBE	Oneida Total Integrated Enterprises Milwaukee, WI 53226	Hydraulic modeling, design services	TBD	TBD
SBE	Stony Point Hydrology LLC Mukwonago, WI 53149	Hydraulic modeling, design services	TBD	TBD
WBE	Penne Wilson Consulting Sturgeon Bay, WI 54235	Technical writing	TBD	TBD
Non-SWMBE	HNTB Corporation Milwaukee, WI 53202	Design services	TBD	TBD

ECONOMIC DEVELOPMENT ELEMENTS

Local Office Preference? Y

Mentor Protégé? n/a

OUTREACH INFORMATION

The Procurement team performed the following outreach: advertised in the Daily Reporter, sent an e-mail notification to all registered firms in the Architecture & Engineering category, and sent targeted e-mails to 96 SWMBE engineering firms. The proposal opportunity is also publicly accessible from the MMSD website and Bonfire, the portal used to post RFPs. Bonfire also performs outreach to its users when an RFP is posted.

S/W/MBE Document Takers:

Applied Science, Inc.; Fish Creek Restoration LLC; Fusion Integrated Solutions, LLC; GESTRA Engineering, Inc.; Globetrotters Engineering Corporation; Helianthus LLC; K. Singh & Associates, Inc.; Kapur and Assoc.; M Squared Engineering, LLC; Oneida Total Integrated Enterprises (OTIE); RFx Analyst, Inc.; Stony Point Hydrology LLC

If no or low S/W/MBE participation, explain why:

n/a

Additional Comments:

The prime will meet or exceed the District's SWMBE participation goal of 20%. However, due to the nature of this contract, it is unknown at this time the exact dollar participation for each sub-consultant firm.

AWARDEE INFORMATION

Company: Arcadis U.S., Inc.
Contact Person: Tom Lachcik, PE, BCEE
Phone Number: (847) 805-1048
E-mail Address: Tom.Lachcik@arcadis.com

EEO DATA

630 Plaza Drive, Suite 100
Highlands Ranch, CO 80129
Location: (US Headquarters)

Total # of Employees 5046

	<u>Total</u>	<u>%</u>
Minorities	<u>1,023</u>	<u>20.3%</u>
Asian	<u>414</u>	<u>8.2%</u>
Black or African American	<u>207</u>	<u>4.1%</u>
Hispanic or Latino	<u>309</u>	<u>6.1%</u>
Native American	<u>19</u>	<u>0.4%</u>
Other Minority	<u>74</u>	<u>1.5%</u>

Labor Market Availability - Minorities 55.9%

	<u>Total</u>	<u>%</u>
Females	<u>1,856</u>	<u>36.8%</u>
Asian	<u>174</u>	<u>3.4%</u>
Black or African American	<u>72</u>	<u>1.4%</u>
Hispanic or Latino	<u>116</u>	<u>2.3%</u>
Native American	<u>9</u>	<u>0.2%</u>
Other Minority	<u>28</u>	<u>0.6%</u>

Labor Market Availability - Females 22.8%

PRIME PERFORMANCE HISTORY - S/W/MBE COMPLIANCE

Contract Title	Start Date	Percent Complete	Contract Value	Payments to Prime	Proposed SWMBE \$	Proposed SWMBE %	SWMBE Actuals \$	SWMBE Actuals %
C98056P01 - ES Conveyance System Evaluation and Modeling Software Improvements	10/25/2018	86%	\$ 2,165,153	\$ 1,867,596	\$ 446,022	21%	\$ 190,065	10%
J06034E01 - PRELIMINARY ENGINEERING & DESIGN OF IMPROVEMENTS TO HEAD TANKS	2/24/2014	100%	\$ 440,359	\$ 440,352	\$ 121,803	28%	\$ 135,771	31%
S02013D01 - Eng Serv SS WRF Return Activated Sludge System	3/17/2016	91%	\$ 571,588	\$ 520,720	\$ 133,180	23%	\$ 75,497	14%
S03003D01 - Eng Services SSWRF Post-Secondary Capacity Improvements	9/2/2016	96%	\$ 821,056	\$ 784,477	\$ 183,999	22%	\$ 125,679	16%

COMMISSION FILE NO: 21-033-3 **DATE INTRODUCED:** March 8, 2021

INTRODUCED BY: Executive Director (Signature on File in the Office of the Commission)

REFERRED BY COMMISSION CHAIRPERSON TO: Operations Committee

RELATING TO: Approval of Funding Agreement M10005WE01 Under Project M10005, 2021 City of West Allis Private Property Infiltration and Inflow Reduction Project

SUMMARY:

The Commission is requested to authorize and to direct the Executive Director to execute on behalf of the District Funding Agreement M10005WE01 in the amount of \$600,000 for work outlined in Work Plan M10005WE01 as submitted by the City of West Allis under project M10005, Private Property Infiltration and Inflow (PPII) Reduction Program. Including Work Plan M10005WE01, the City of West Allis has obligated 62% of the funding available to the City through 2021 in the PPII Program.

The City of West Allis has concentrated their private property work through the District program on foundation drain disconnection (FDD) while completing some lateral rehabilitation. Work Plan M10005WE01 follows the City's strategy of coordinating private property work with the public street reconstruction schedule. FDD and sanitary lateral rehabilitation are proposed to be completed after new public stormwater infrastructure has been installed, including storm lateral connections to each property, as part of the public street reconstruction work.

ATTACHMENTS: **BACKGROUND** ☒ **KEY ISSUES** ☐ **RESOLUTION** ☒
FISCAL NOTE ☒ **S/W/MBE** ☐ **OTHER** ☐ _____

OP_West_Allis_M10005WE01_II_Reduction_Project_legislative_file.docx
02-15-21

COMMITTEE ACTION: _____ **DATE:** _____

COMMISSION ACTION: _____ **DATE:** _____

BACKGROUND

Approval of Funding Agreement M10005WE01 Under Project M10005, 2021 City of West Allis Private Property Infiltration and Inflow Reduction Project

The City of West Allis has completed eight private property projects to date focusing on FDD. With 60% of the homes in West Allis estimated to predate 1954 (State building code revision), the City identified foundation drains as the primary source of infiltration and inflow in the City sanitary sewers. The City has also completed lateral rehabilitation work.

Work Plan M10005WE01 proposes to complete FDD and lateral rehabilitation on 60 homes following reconstruction of five streets. The older housing stock in denser parts of the City affords limited space for surface discharge of redirected foundation drain water on lawns. The City installs new public stormwater conveyance and water service infrastructure during street reconstruction, including a storm lateral stub to each property, to help overcome this. The subsequent private property work includes many parts, including FDD, sump pump installation, storm lateral installation, sanitary lateral rehabilitation, lead water service line (LWSL) removal, and new water service line installation. All private property work is voluntary. To date, the voluntary City programs have achieved an approximate 30% participation rate.

The five project area streets reside in eight different metersheds that have flows that are significantly influenced by wet weather. The private property scope of work including sanitary and LWSL work will be publicly bid in late March 2021 independent of street reconstruction. All work is anticipated to be completed in 2021.

This sanitary lateral, FDD, and storm lateral work is funded through the accumulated annual allocations to the PPII Program, Project M10005, and does not represent an increase in total project cost. The LWSL work is funded through a Wisconsin Department of Natural Resources grant secured by the City. Street reconstruction and public sector utility work is funded by the City. The planning, design, construction engineering, and public outreach for the private property work will be completed by City staff. The City is requiring a cost match by property owners of \$695 for the storm sewer connection (and \$1,065 for commercial properties).

Including Work Plan M10005WE01, the City of West Allis has obligated 62% (\$600,000/\$960,080) of the funding available to the City through 2021 in the PPII Program.

RESOLUTION

Approval of Funding Agreement M10005WE01 Under Project M10005, 2021 City of West Allis Private Property Infiltration and Inflow Reduction Project

RESOLVED, by the Milwaukee Metropolitan Sewerage Commission, that the Executive Director is authorized and directed to execute on behalf of the District Funding Agreement M10005WE01 in the amount of \$600,000 for work outlined in Work Plan M10005WE01 as submitted by the City of West Allis under project M10005, Private Property Infiltration and Inflow Program.



Capital Budget Fiscal Note Total Project Cost

RELATING TO:

Approval of Funding Agreement M10005WE01 Under Project M10005, 2021 City of West Allis Private Property Infiltration and Inflow Reduction Project

Capital Project Number(s)

M10005

Impact of Requested Action on Total Project Cost:

☐

Increase

☐

Decrease

☐

New Project

☒

No Change

Total Project Cost Analysis

Adopted 2021 Total Project Cost

Previously Approved Changes

Approved Total Project Cost

Requested Total Project Cost

Requested (Increase)/Decrease

Project Costs

*

\$0

*

n/a

\$0

Action to be taken to Long-Range Financing Plan to address Total Project Cost change

_____ Transfer from Allowance for Cost and Schedule Changes

_____ Transfer from another project (specify in comments)

_____ Delay Project(s) (specify in comments)

_____ Delete Project(s) (specify in comments)

_____ Other _____

_____ Transfer to Allowance for Cost and Schedule Changes

Comments

*The PP I/I program does not have a total project cost because it is a capital program. The long-range financing plan includes \$30.0 million. The program's reserve and the long-range financing plan have sufficient funding for the current request of \$600,000.

Budget Review by:

Christine Durkin

Date:

2/10/2021

COMMISSION FILE NO: 21-034-3 **DATE INTRODUCED:** March 8, 2021

INTRODUCED BY: Executive Director (Signature on File in the Office of the Commission)

REFERRED BY COMMISSION CHAIRPERSON TO: Policy, Finance, and Personnel Committee

RELATING TO: Agreement between the Milwaukee Metropolitan Sewerage District and Milwaukee County for Kletzsch Dam Repair and Fish Passage Installation and Assume the Inter-Fluve, Inc., Contract from Milwaukee County

SUMMARY:

The Commission is requested to authorize the Executive Director to execute an intergovernmental cooperation agreement (ICA) between the Milwaukee Metropolitan Sewerage District (District) and Milwaukee County (County) for the District to design and construct a fish passage around Kletzsch Dam and implement required repairs to the dam.

Further, the Commission is requested to award and to direct the Executive Director to execute on behalf of the District the contract with Inter-Fluve, Inc., from the County.

Kletzsch Dam is located on the Milwaukee River in the City of Glendale at Kletzsch Park and is owned by Milwaukee County. The dam was built in the mid-1930's and consists of a serpentine-shaped, fixed crest, large stone masonry spillway. It is subject to a repair order from the Wisconsin Department of Natural Resources (WDNR) to address minor operational deficiencies, including vegetation encroachment, masonry facing deterioration, and nonoperating stop-logs.

Kletzsch Dam is currently a barrier to the migration of many native fish species. Ensuring that native fish can migrate from Lake Michigan to spawning and juvenile rearing habitats upstream of the dam in the Milwaukee River and its tributaries is a priority for restoring and maintaining the ecological health of the Milwaukee River and Lake Michigan. Reestablishing aquatic organism passage at Kletzsch Dam is identified as a necessary project to address the Fish and Wildlife Habitat Beneficial Use Impairment for the Milwaukee Estuary Area of Concern (AOC).

ATTACHMENTS: **BACKGROUND** ☐ **KEY ISSUES** ☐ **RESOLUTION** ☒
FISCAL NOTE ☐ **S/W/MBE** ☐ **OTHER** ☐

PPF_Kletzsch_ICA_and_Assume_InterFluve_Contract_legislative_file.docx
02-22-21

COMMITTEE ACTION: _____ **DATE:** _____

COMMISSION ACTION: _____ **DATE:** _____

SUMMARY (Cont'd)

Agreement between the Milwaukee Metropolitan Sewerage District and Milwaukee County for Kletsch Dam Repair and Fish Passage Installation and Assume the Inter-Fluve, Inc., Contract from Milwaukee County

An AOC is an area that has experienced significant environmental degradation and a resource that the public is unable to fully use in a safe or beneficial way. The Milwaukee River Estuary was designated as an AOC in the 1980's, because historical contamination impaired public benefits, such as water quality, fish consumption, healthy fisheries, and wildlife habitat. The Milwaukee River Estuary includes portions of the three major rivers in Milwaukee (the Milwaukee, the Menomonee, and the Kinnickinnic Rivers) and Lake Michigan.

In 2017, the County entered into an agreement with WDNR to design and construct fish passage at Kletsch Dam in conjunction with the planned dam repair work. The County hired Inter-Fluve, Inc., through a competitive selection process to develop the design. Several alternatives were analyzed, and a preferred alternative was selected; however, due to opposition from members of the public, the County chose not to implement this alternative.

Through subsequent discussions among the County, the District, and WDNR, it was concluded that the District's assistance would benefit the project. This is largely due to the District's experience in watercourse work and recent success on similar projects. The parties will work together to ensure any repairs or alterations to the Kletsch Park Dam do not increase the risk of regional flooding. The County and District have proposed developing an ICA that would include transfer of available funding to the District to continue the design of a fish passage solution. The ICA also would include assigning the Inter-Fluve, Inc., contract from the County to the District. Approximately \$200,000 of the available funding is remaining in the Inter-Fluve, Inc., contract. The responsibility for the dam repair design and implementation would also be transferred to the District to maintain the efficiencies associated with completing the work together. The District will not be responsible for financing the project in absence of grant funding.

District responsibilities under an ICA will include:

- Implementing the repair of Kletsch Dam and install fish passage;
- Providing the County the opportunity to provide input into the design of the project;
- Assuming the contract between the County and Inter-Fluve, Inc., and modifying the contract as appropriate;
- Acquiring real estate interests necessary to construct the project;
- Overseeing management of any hazardous materials encountered in constructing the project;
- Performing resident inspection and resident engineering for the project;
- Supporting efforts to secure additional grant funds for the project; and
- Ensuring establishment of vegetation and management of invasive species for a minimum of three years post-construction.

SUMMARY (Cont'd)

Agreement between the Milwaukee Metropolitan Sewerage District and Milwaukee County for Kletzsch Dam Repair and Fish Passage Installation and Assume the Inter-Fluve, Inc., Contract from Milwaukee County

The County's responsibilities under the ICA will include:

- Relocating any County utilities or assets necessary to complete the project;
- Reviewing and comment on plans, specifications, solicitations for contracts, and proposed contract modifications;
- Assigning the Inter-Fluve, Inc., contract to the District;
- Supporting outreach efforts, presenting project progress to the County Board, and seeking any necessary approvals from the County Board;
- Consulting with the District and execute any necessary real estate documents;
- Releasing any unspent grant funds to the District, fulfilling any obligations to provide matching funds, and coordinating with the District on efforts to secure additional grant funds for the project; and
- Owning, operating, and maintaining the project following substantial completion.

RESOLUTION

Agreement between the Milwaukee Metropolitan Sewerage District and Milwaukee County for Kletzsch Dam Repair and Fish Passage Installation and Assume the Inter-Fluve, Inc., Contract from Milwaukee County

RESOLVED, by the Milwaukee Metropolitan Sewerage Commission, that the Executive Director is authorized to execute an intergovernmental cooperation agreement between the Milwaukee Metropolitan Sewerage District and Milwaukee County for Kletzsch Dam repair and fish passage installation as described herein.

FURTHER RESOLVED, by the Milwaukee Metropolitan Sewerage Commission, that the Executive Director is authorized to assume the Inter-Fluve, Inc., contract from Milwaukee County.

COMMISSION FILE NO: 21-035-3 **DATE INTRODUCED:** March 8, 2021

INTRODUCED BY: Executive Director (Signature on File in the Office of the Commission)

REFERRED BY COMMISSION CHAIRPERSON TO: Policy, Finance, and Personnel Committee

RELATING TO: Settlement of Ferric Chloride Dispute with Veolia Water Milwaukee, LLC

SUMMARY:

The Commission is requested to adopt a proposed settlement of a claim by Veolia Water Milwaukee, LLC, (Veolia) regarding the ferric chloride dispute.

In November 2019, the District ordered its contract operator, Veolia, to feed ferric chloride to the primary treatment process at the South Shore Water Reclamation Facility (SSWRF) at the rate of four gallons per minute in response to repeated violations of contract effluent standards in 2017, 2018, and 2019.

Veolia disputed the District's authority to direct it to feed ferric chloride to the primary treatment process at SSWRF and made a claim for the additional ferric chloride expenditures, ranging from \$85,000 to \$95,000 per month.

The District is recommending settlement of this matter for \$400,000. The District has rescinded its order to Veolia to feed ferric chloride to the primary treatment process at SSWRF.

ATTACHMENTS: **BACKGROUND** ☐ **KEY ISSUES** ☐ **RESOLUTION** ☒
FISCAL NOTE ☒ **S/W/MBE** ☐ **OTHER** ☐ _____

PFP_VWM_Ferric_Chloride_Settlement_legislative_file.docx
02-15-21

COMMITTEE ACTION: _____ **DATE:** _____

COMMISSION ACTION: _____ **DATE:** _____

RESOLUTION

Settlement of Ferric Chloride Dispute with Veolia Water Milwaukee, LLC

RESOLVED, by the Milwaukee Metropolitan Sewerage Commission, that the proposed settlement of a claim made by Veolia Water Milwaukee, LLC, for the cost of ferric chloride in the amount of \$400,000 is approved.

FURTHER RESOLVED, by the Milwaukee Metropolitan Sewerage Commission, that the Executive Director is authorized to execute the documents necessary to effectuate this settlement.



O&M Budget Fiscal Note

RELATING TO:

Settlement of Ferric Chloride Dispute with Veolia Water Milwaukee, LLC

Cost Center: OCC _____	Line Item: 643-1 _____																		
Line Item Impact <table style="width: 100%; border-collapse: collapse;"> <tr> <td style="width: 60%;">2021 Original Budget</td> <td style="width: 10%; text-align: right;">\$50,014,707</td> <td style="width: 10%; border-top: 1px solid black;"></td> </tr> <tr> <td>Carryovers or Transfers</td> <td style="text-align: right;">\$0</td> <td style="border-top: 1px solid black;"></td> </tr> <tr> <td>Adjusted Budget</td> <td style="text-align: right;">\$50,014,707</td> <td style="border-top: 1px solid black;"></td> </tr> <tr> <td>Estimated Annual Expenditure including Request</td> <td style="text-align: right;">\$50,014,707</td> <td style="border-top: 1px solid black;"></td> </tr> <tr> <td>Anticipated Year End Balance</td> <td style="text-align: right;">\$0</td> <td style="border-top: 1px solid black;"></td> </tr> <tr> <td>Actual Year to Date Expenditures Through</td> <td style="text-align: right;">\$0</td> <td style="border-top: 1px solid black;"></td> </tr> </table> <p style="margin-top: 20px;">For unfavorable Year End Balance, identify funding source:</p> <div style="display: flex; justify-content: flex-start; gap: 20px;"> <input type="checkbox"/> Absorbed within the Division <input type="checkbox"/> Other Division <input type="checkbox"/> Unallocated Reserve </div>		2021 Original Budget	\$50,014,707		Carryovers or Transfers	\$0		Adjusted Budget	\$50,014,707		Estimated Annual Expenditure including Request	\$50,014,707		Anticipated Year End Balance	\$0		Actual Year to Date Expenditures Through	\$0	
2021 Original Budget	\$50,014,707																		
Carryovers or Transfers	\$0																		
Adjusted Budget	\$50,014,707																		
Estimated Annual Expenditure including Request	\$50,014,707																		
Anticipated Year End Balance	\$0																		
Actual Year to Date Expenditures Through	\$0																		
<table style="width: 100%; border-collapse: collapse;"> <thead> <tr> <th style="width: 35%; text-align: left;">Anticipated Expenditure Timing</th> <th style="width: 15%; text-align: center;">Requested Expenditures</th> <th style="width: 15%; text-align: center;">Anticipated Savings/Revenues</th> <th style="width: 35%; text-align: center;">Net Fiscal Impact</th> </tr> </thead> <tbody> <tr> <td>Current Year (2021)</td> <td style="text-align: right;">\$400,000</td> <td style="text-align: right;">\$0</td> <td style="text-align: right;">\$400,000</td> </tr> <tr> <td>Subsequent</td> <td style="text-align: right;">\$0</td> <td style="text-align: right;">\$0</td> <td style="text-align: right;">\$0</td> </tr> <tr> <td>Total Cost</td> <td style="text-align: right;">\$400,000</td> <td style="text-align: right;">\$0</td> <td style="text-align: right;">\$400,000</td> </tr> </tbody> </table>			Anticipated Expenditure Timing	Requested Expenditures	Anticipated Savings/Revenues	Net Fiscal Impact	Current Year (2021)	\$400,000	\$0	\$400,000	Subsequent	\$0	\$0	\$0	Total Cost	\$400,000	\$0	\$400,000	
Anticipated Expenditure Timing	Requested Expenditures	Anticipated Savings/Revenues	Net Fiscal Impact																
Current Year (2021)	\$400,000	\$0	\$400,000																
Subsequent	\$0	\$0	\$0																
Total Cost	\$400,000	\$0	\$400,000																

Comments: This is accrued as a 2020 expense.

Budget Review by:

Theresa Zwieg _____

Date

2/8/2021 _____

COMMISSION FILE NO: 21-036-3 **DATE INTRODUCED:** March 8, 2021

INTRODUCED BY: Executive Director (Signature on File in the Office of the Commission)

REFERRED BY COMMISSION CHAIRPERSON TO: Policy, Finance, and Personnel Committee

RELATING TO: Project Partnership Agreement with the United States Army Corps of Engineers for the Kinnickinnic River Reach 3, Project W40007

SUMMARY:

The Commission is requested to authorize the Executive Director to execute a project partnership agreement (PPA) with the United States Army Corps of Engineers (USACE) for the Kinnickinnic (KK) River Reach 3, Project W40007, to be the non-federal sponsor agreeing to pay or provide in-kind services for project costs currently valued at \$5,159,479.

The updated KK River Watercourse Management Plan, approved by the Commission on July 22, 2019, includes recommendations to replace the concrete channel lining along Reach 3 of the KK River between S. 27th Street and the KK River Parkway in Jackson Park with a naturalized stream. The concrete channel lining is a District asset that was installed in the 1960's. The lining is significantly degraded throughout the project area and reaching the end of its useful life. The proposed naturalized channel will improve public safety by slowing down flood flows, provide long term streambank stabilization, and enhance the habitat value of the riparian corridor.

At the request of the District, in 2011, USACE began the process for determining their involvement in funding and undertaking the KK River Reach 3 Project. Since then, USACE has completed all steps necessary to execute a PPA with the District, and they have obtained the necessary funding for the project to proceed. The PPA sets forth terms and conditions for project implementation by USACE, including how costs and responsibilities will be shared between USACE and the District.

ATTACHMENTS: **BACKGROUND** ☐ **KEY ISSUES** ☐ **RESOLUTION** ☒
FISCAL NOTE ☒ **S/W/MBE** ☐ **OTHER** ☐ _____

PPF_KKR3_W40007_USACE_PPA_2nd_Update_legislative_file.docx
02-11-21

COMMITTEE ACTION: _____ **DATE:** _____

COMMISSION ACTION: _____ **DATE:** _____

SUMMARY (Cont'd)

Project Partnership Agreement with the United States Army Corps of Engineers for the Kinnickinnic River Reach 3, Project W40007

In December 2018, the Commission authorized the District to enter a PPA with USACE for the KK River Reach 3 project. As the USACE has their own processes to develop and execute a PPA, they did not proceed with executing the PPA at that time. The USACE changed the office from which the project was administered from their Detroit office to their Chicago office and changed project managers. USACE added the replacement of a pedestrian bridge to the project. USACE has indicated that they are now ready to proceed with the PPA; however, given the project delays and additional scope, USACE had to update the PPA and its cost estimates and revise the cost sharing.

The table below summarizes cost sharing between USACE and the District. Ecosystem restoration consists of the concrete channel removal and stream corridor naturalization. The recreation element consists of replacing Milwaukee County's pedestrian bridge over the KK River at S. 31st Street. Costs include design, construction, real estate, construction management and other costs associated with the project. The District's total cost share also includes \$234,839 for 50% of the remaining costs of work the USACE previously performed on this project's feasibility study.

Project Element	USACE Cost Share*		District Cost Share		Total \$
Ecosystem Restoration	65%	\$ 8,870,438	35%	\$ 4,776,390	\$13,646,828
Recreation	50%	\$148,250	50%	\$148,250	\$ 296,500
Remaining Feasibility Study Costs	50%	\$234,839	50%	\$234,839	\$469,678
Total		\$ 9,253,527		\$5,159,479	\$14,413,006

*USACE will fund up to a maximum amount of \$10,000,000, exclusive of the feasibility study.

These updates increase the cost estimate developed in December 2018 by \$2,229,042 and increased the District's cost share by \$682,632.

SUMMARY (Cont'd)

Project Partnership Agreement with the United States Army Corps of Engineers for the Kinnickinnic River Reach 3, Project W40007

Under the PPA, the District will:

- Participate on the project coordination team, which oversees all aspects of the project design, construction, and dispute resolution;
- Collect field data (e.g., survey);
- Provide comments on all project documents;
- Obtain required permitting and real estate;
- Assess the potential for contamination at the site;
- Manage disposal of excess excavated material and hazardous materials encountered during the project; and
- Operate and maintain the project once completed.

The cost of the District performing these activities above (except for post-construction operation and maintenance) count toward the District's cost share.

USACE will:

- Participate on the project coordination team;
- Manage the project design in consultation with the District;
- Publicly bid and manage construction contractors and all construction;
- Prepare a monitoring, operations, and maintenance plan for the District; and
- Provide quarterly progress reports to the District.

This project is located entirely on land owned by Milwaukee County. Under a separate Commission request, the District is requesting authorization to enter into an agreement with Milwaukee County that will address rights to construct this project as well as long term project improvement ownership, operation and maintenance.

This request supersedes the authorization provided by the Commission under Resolution No. 18-124-12 in December 2018.

RESOLUTION

Project Partnership Agreement with the United States Army Corps of Engineers for the Kinnickinnic River Reach 3, Project W40007

RESOLVED, by the Milwaukee Metropolitan Sewerage Commission, that the Executive Director is authorized to enter into a project partnership agreement with the United States Army Corps of Engineers for the Kinnickinnic River Reach 3, Project W40007, to be the nonfederal project sponsor agreeing to pay or provide in-kind services for project costs currently valued at \$5,159,479.



Capital Budget Fiscal Note Total Project Cost

RELATING TO:

Project Partnership Agreement with the United States Army Corps of Engineers for the Kinnickinnic River Reach 3, Project W40007

Capital Project Number(s)

W40007

Impact of Requested Action on Total Project Cost:

☐ Increase ☐ Decrease ☐ New Project ☒ No Change

Total Project Cost Analysis

Adopted 2021 Total Project Cost
Previously Approved Changes
Approved Total Project Cost
Requested Total Project Cost
Requested (Increase)/Decrease

Project Costs

\$14,350,727
\$0
\$14,350,727
n/a
\$0

Action to be taken to Long-Range Financing Plan to address Total Project Cost change

_____ Transfer from Allowance for Cost and Schedule Changes
_____ Transfer from another project (specify in comments)
_____ Delay Project(s) (specify in comments)
_____ Delete Project(s) (specify in comments)
_____ Other _____
_____ Transfer to Allowance for Cost and Schedule Changes

Comments

Budget Review by:

Theresa Zwieg

Date:

2/10/2020

COMMISSION FILE NO: 21-037-3 **DATE INTRODUCED:** March 8, 2021

INTRODUCED BY: Executive Director (Signature on File in the Office of the Commission)

REFERRED BY COMMISSION CHAIRPERSON TO: Policy, Finance, and Personnel Committee

RELATING TO: Agreement between the Milwaukee Metropolitan Sewerage District and Milwaukee County for the Kinnickinnic River Reach 3, Project W40007

SUMMARY:

The Commission is requested to authorize the Executive Director to execute an intergovernmental cooperation agreement (ICA) between the Milwaukee Metropolitan Sewerage District (District) and Milwaukee County (County) for the Kinnickinnic (KK) River Reach 3, Project W40007, in an amount not to exceed \$350,000

The updated KK River Watercourse Management Plan, approved by the Commission on July 22, 2019, includes recommendations to replace the concrete channel lining along Reach 3 of the KK River between S. 27th Street and the KK River Parkway in Jackson Park with a naturalized stream. The concrete channel lining is a District asset that was installed in the 1960's. The lining is significantly degraded throughout the project area and reaching the end of its useful life. The proposed naturalized channel will improve public safety by slowing down flood flows, providing long term streambank stabilization, and enhancing the habitat value of the riparian corridor.

Under a separate Commission request, the District is requesting to execute a project partnership agreement (PPA) with the United States Army Corps of Engineers (USACE) for the design and construction of the KK River Reach 3 project. Under the terms of the PPA, the USACE will design and construct the project and provide approximately \$9 million in federal funding for the project. The District will be the non-federal sponsor and provide approximately \$5 million for the project.

ATTACHMENTS: BACKGROUND ☐ KEY ISSUES ☐ RESOLUTION ☒
FISCAL NOTE ☒ S/W/MBE ☐ OTHER ☐ _____

*PFP_County_ICA_KK_River_R3_legislative_file.docx
02-15-21*

COMMITTEE ACTION: _____ **DATE:** _____

COMMISSION ACTION: _____ **DATE:** _____

SUMMARY (Cont'd)

Agreement between the Milwaukee Metropolitan Sewerage District and Milwaukee County for the Kinnickinnic River Reach 3, Project W40007

The KK River Reach 3 project is located on land owned by the County. The proposed work, as described in the PPA, will have direct and indirect impacts on County-owned park facilities within the project area, including the removal and replacement of the pedestrian bridge over the KK River at S. 31st Street and existing trees along the parkway. District staff has negotiated an ICA between the District and the County to implement the KK River Reach 3 project under the PPA with the USACE. The following are key agreement terms.

The District responsibilities are to:

- Act as the non-federal sponsor in the PPA with the USACE including payment of all non-federal sponsor contributions currently estimated at \$5,159,479.
- Pay the County for trees removed within the project area in an amount not to exceed \$350,000.
- Provide the County with opportunities to review and comment upon all designs prior to the public bidding phase and review of construction contract change orders; however, the USACE has exclusive control to award contracts and execute contract change orders.
- Include County staff in the key project decision making processes during the design phase.
- Provide public outreach and opportunities for public input.
- Obtain all regulatory approvals and permits required for the work.
- Perform long-term maintenance of the naturalized stream and assist the County with post flood event remediation of any impacted areas of the park.
- Provide record drawings to the County upon completion of the work.

The County will:

- Provide input throughout the project.
- Provide access to the park for the design and construction of the project and long-term maintenance of the naturalized stream at no cost to the District and USACE.
- Provide any County required permits to the District and USACE at no cost.
- Grant a permanent flood easement to the District.
- Perform long-term maintenance of the park facilities and open space areas.

RESOLUTION

Agreement between the Milwaukee Metropolitan Sewerage District and Milwaukee County for the Kinnickinnic River Reach 3, Project W40007

RESOLVED, by the Milwaukee Metropolitan Sewerage Commission, that the Executive Director is authorized to execute an intergovernmental cooperation agreement between the Milwaukee Metropolitan Sewerage District and Milwaukee County for the Kinnickinnic River Reach 3, Project W40007, in an amount not to exceed \$350,000.



Capital Budget Fiscal Note

Total Project Cost

RELATING TO:

Agreement between the Milwaukee Metropolitan Sewerage District and Milwaukee County for the Kinnickinnic River Reach 3, Project W40007

Capital Project Number(s)

W40007

Impact of Requested Action on Total Project Cost:☐

Increase

☐

Decrease

☐

New Project

☒

No Change

Total Project Cost Analysis

Adopted 2021 Total Project Cost

Previously Approved Changes

Approved Total Project Cost

Requested Total Project Cost

Requested (Increase)/Decrease

Project Costs

\$14,350,727

\$0

\$14,350,727

n/a

\$0

Action to be taken to Long-Range Financing Plan to address Total Project Cost change

_____ Transfer from Allowance for Cost and Schedule Changes

_____ Transfer from another project (specify in comments)

_____ Delay Project(s) (specify in comments)

_____ Delete Project(s) (specify in comments)

_____ Other _____

_____ Transfer to Allowance for Cost and Schedule Changes

Comments

Budget Review by:

Theresa Zwieg

Date:

2/11/2020

COMMISSION FILE NO: 21-038-3 **DATE INTRODUCED:** March 8, 2021

INTRODUCED BY: Executive Director (Signature on File in the Office of the Commission)

REFERRED BY COMMISSION CHAIRPERSON TO: Policy, Finance, and Personnel Committee

RELATING TO: Declaration of Excess Lands and Authorization to Transfer One Greenseams® Purchased Property and to Place a Greenseams® Conservation Easement over Two Properties Owned by Milwaukee Area Land Conservancy

SUMMARY:

The Commission is requested to declare as excess one parcel of land, known as Ryan Creek Prairie, per Commission Policy 1-11.03, Real Estate Policy, and Administrative Policy 2-11.03, Real Estate Delegation of Authority. The Commission is further requested to authorize the Executive Director to transfer the parcel to the Milwaukee Area Land Conservancy (MALC) as part of the Greenseams® Program, while retaining a conservation easement over the parcel in perpetuity. The District will require MALC to maintain the parcel consistent with those conservation values and place a conservation easement in favor of the District over two additional parcels in its inventory in exchange for the transfer and payment of a one-time maintenance fee.

MALC is a conservation organization, founded by local volunteers, with the purpose of land protection and management. It owns and manages more than 90 acres of land in the City of Franklin.

MMSD staff proposes that the District transfer the Ryan Creek Prairie property identified in Table 1 below to MALC subject to a permanent conservation easement retained by the District. The transfer costs to the District will be an estimated \$2,000 in closing fees and real estate expenses. The declaration of excess land by the Commission is necessary to comply with Wis. Stat. §200.43(4) prior to the District conveying the title for the Ryan Creek Prairies property to MALC.

ATTACHMENTS: **BACKGROUND** ☐ **KEY ISSUES** ☐ **RESOLUTION** ☒
FISCAL NOTE ☒ **S/W/MBE** ☐ **OTHER** ☒ Property Map

PFP_Greenseams_Transfer_MALC_legislative_file.docx
02-15-21

COMMITTEE ACTION: _____ **DATE:** _____

COMMISSION ACTION: _____ **DATE:** _____

SUMMARY (Cont'd)

Declaration of Excess Lands and Authorization to Transfer One Greenseams® Purchased Property and to Place a Greenseams® Conservation Easement over Two Properties Owned by Milwaukee Area Land Conservancy

Table 1

Property	Municipality	Tax Key Number	Acres
Ryan Creek Prairie	Franklin	889-9990	50

The property was purchased in 2008 for \$475,000, with \$253,477 from the Wisconsin Knowles Nelson Stewardship Fund. In 2009, the Greenseams® Program initiated a high quality prairie and wetland restoration project funded by U.S. Fish and Wildlife Service. The proposed transfer is consistent with the District's plans for the long-term management and maintenance of Greenseams® properties. As part of the conservation easement over the Ryan Creek Prairie, MALC will agree to additional prairie seeding, invasive species control, habitat improvements, informative signage, and promotion of the site to the public. To perform these tasks identified in the conservation easement, the District will pay a one-time \$35,000 fee to MALC.

Furthermore, as part of this partnership, MALC will place a Greenseams® conservation easement over two of their properties, Fitzsimmons Woods and Carity Prairie. The closing fees and real estate expenses for the two conservation easement costs to the District will not exceed \$2,000.

Fitzsimmons Woods is an Isolated Natural Resource Area as identified by the Southeastern Wisconsin Regional Planning Commission in Planning Report #42, "A Regional Natural Areas and Critical Species Habitat Protection and Management Plan for Southeastern Wisconsin." The overall site is approximately 43 acres in size with 19 acres under ownership of Milwaukee County. The conservation easement will cover the remaining 24.5 acres to which MALC holds title, thus maintaining a direct link to the portion of woodland owned by the County.

The many wetlands and natural drainageways in Fitzsimmons Woods are headwaters to the Oak Creek and the Root River. The site is a southern mesic beech-maple woodland with a heavy composition of oak species also present. It is host to 145 native Wisconsin plant species as well as 13 ephemeral wetlands (vernal pools).

MALC partnered with the previous property owner, Bill Carity, to preserve a rare prairie remnant and restore a sedge meadow complex. The 23-acre site is open to the public and is one of the last known examples of virgin (unplowed) prairie in the highly populated Milwaukee County.

RESOLUTION

Declaration of Excess Lands and Authorization to Transfer One Greenseams® Purchased Property and to Place a Greenseams® Conservation Easement over Two Properties Owned by Milwaukee Area Land Conservancy

RESOLVED, by the Milwaukee Metropolitan Sewerage Commission, that the Executive Director is authorized, as part of the Greenseams® Program, to transfer one property to the Milwaukee Area Land Conservancy, as identified in Table 1 below, while retaining a conservation easement over the parcel for the benefit of the District to protect the conservation values of the parcel in perpetuity and to require the partner organization to maintain the parcel in perpetuity consistent with those conservation values.

Table 1

Property	Municipality	Tax Key Number	Acres
Ryan Creek Prairie	Franklin	889-9990	50

FURTHER RESOLVED, by the Milwaukee Metropolitan Sewerage Commission, that, pursuant to Sec. 200.43(4), Wis. Stats., the District declares as excess any and all property interest greater than the permanent conservation easement to be retained by the District for each of the tax key parcels identified in Table 1 above.

FURTHER RESOLVED, by the Milwaukee Metropolitan Sewerage Commission, that the Executive Director may accept and execute on behalf of the Commission all related conservation easements, deeds of conveyance, or other related real estate documents for an amount not to exceed \$2,000 and make a \$35,000 payment to Milwaukee Area Land Conservancy for long-term ecological management and maintenance activities for Ryan Creek Prairie.

FURTHER RESOLVED, by the Milwaukee Metropolitan Sewerage Commission, that the Executive Director is authorized to place a Greenseams® conservation easement over each of two properties owned by Milwaukee Area Land Conservancy, known as Fitzsimmons Woods (24.5 acres) and Carity Prairie (23 acres), located in the city of Franklin, for an amount not to exceed \$2,000 for closing fees and real estate expenses.



Capital Budget Fiscal Note

Total Project Cost

RELATING TO:

Declaration of Excess Lands and Authorization to Transfer One Greenseams® Purchased Property and to Place a Greenseams® Conservation Easement over Two Properties Owned by Milwaukee Area Land Conservancy

Capital Project Number(s)

W97004

Impact of Requested Action on Total Project Cost:

☐ Increase ☐ Decrease ☐ New Project ☒ No Change

Total Project Cost Analysis

Adopted 2021 Total Project Cost
Previously Approved Changes
Approved Total Project Cost
Requested Total Project Cost
Requested (Increase)/Decrease

Project Costs

*

\$0

*

n/a

\$0

Action to be taken to Long-Range Financing Plan to address Total Project Cost change

_____ Transfer from Allowance for Cost and Schedule Changes
_____ Transfer from another project (specify in comments)
_____ Delay Project(s) (specify in comments)
_____ Delete Project(s) (specify in comments)
_____ Other _____
_____ Transfer to Allowance for Cost and Schedule Changes

Comments

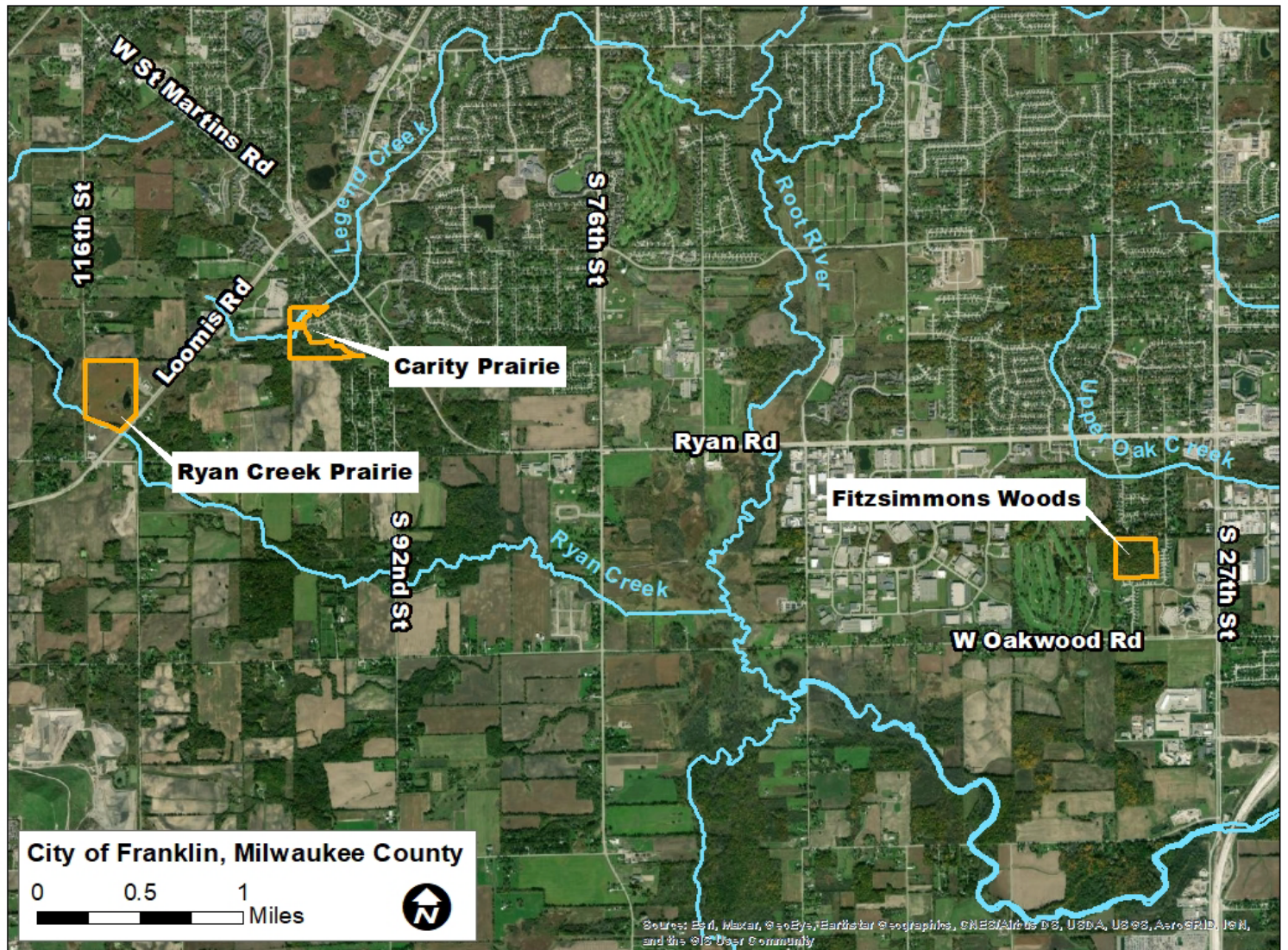
*The Greenseams® program does not have a total project cost because it is a capital program. The 2021 Capital Budget includes \$1.2 million for 2021, and the long-range financing plan includes \$7.2 million. The adopted 2021 Capital Budget and the long-range financing plan have sufficient funding for the current request of \$39,000.

Budget Review by:

Christine Durkin

Date:

2/3/2021



COMMISSION FILE NO: 21-039-3 **DATE INTRODUCED:** March 8, 2021

INTRODUCED BY: Executive Director (Signature on File in the Office of the Commission)

REFERRED BY COMMISSION CHAIRPERSON TO: Policy, Finance, and Personnel Committee

RELATING TO: Award of Contract G98002P10, Bioretention Basins and Turf Naturalization

SUMMARY:

The Commission is requested to authorize the Executive Director to execute on behalf of the District Contract G98002P10, Bioretention Basins and Turf Naturalization, with C.W. Purpero, Inc., in the amount of \$319,977. C.W. Purpero, Inc., was the lowest responsible, responsive bidder among three bids received.

The Stormwater Management Plan (September 2004) for MMSD headquarters at 260 West Seeboth Street required recertification by the City of Milwaukee in 2020. After a stormwater management plan is approved by the City, a written recertification must be prepared by a professional engineer and submitted every five years. As part of this process, the headquarters site was evaluated to determine if additional green infrastructure (GI) projects could be used to demonstrate GI site retrofits that can be used to achieve compliance with MMSD Chapter 13 and other local stormwater regulations.

Through this process, it was determined that additional GI retrofits at the MMSD headquarters site are possible. By incorporating them into the landscape, MMSD partners will have high quality examples of GI while MMSD will further demonstrate commitment to the 2035 Vision.

ATTACHMENTS: **BACKGROUND** ☐ **KEY ISSUES** ☐ **RESOLUTION** ☒
FISCAL NOTE ☒ **S/W/MBE** ☒ **OTHER** ☐

OP_G98002P10_Bioretention_Basins_&_Turf_Naturalization_legislative_file.docx
02-17-21

COMMITTEE ACTION: _____ **DATE:** _____

COMMISSION ACTION: _____ **DATE:** _____

SUMMARY (Cont'd)

Award of Contract G98002P10, Bioretention Basins and Turf Naturalization

There are two types of GI retrofits in this project: bioretention basins and native prairie landscaping. The installation of two bioretention basins on the south end of the headquarters property on the south and east end of the existing wetland can capture additional runoff from the headquarters driveways. These driveways will be repaved as a separate project in the summer of 2021. Adding two new bioretention basins near the existing wetland demonstrates an ability to install bioretention basins on a site with high groundwater using a modified, relatively shallow cross section with a backflow valve. It also demonstrates the ability to retrofit an urbanized site with GI.

The second part of the project is to convert the headquarters site's turf lawn to a native prairie. A native prairie has many benefits over turf that align with District initiatives such as enhanced urban biodiversity, higher infiltration capacity, and a demonstration to partners that a native prairie can be aesthetically pleasing when maintained properly. Trees will also be removed as part of this project to ensure the prairie and bioretention basins can establish themselves and function properly. The majority of the trees to be removed are non-native trees and diseased ash trees. Trees will be planted on site to balance the loss of non-native and diseased trees. The trees that will be planted include native varieties, such as Red Sunset Red Maple, Green Mountain Sugar Maple, Heritage River Birch, Prairie Pride Hackberry, Black Gum, Swamp White Oak, Bur Oak, Red Oak, American Basswood, Allegheny Serviceberry, Cockspur Hawthorn, and Common Witch Hazel.

A third part of the project was an alternate bid item to modify an existing diversion structure that is part of the existing vortex separator. The vortex separator appears on the surface as a large manhole in the northwest median of the parking lot. Due to high river levels, this structure has had diminished function for an extended period of time. To return the structure's function, weir plates will be replaced within the diversion structure, which is upstream of the vortex separator. These new weir plates will hold back the higher river levels, allowing for the vortex separator to operate even during high water levels. The weir plates can be adjusted in the future as water levels fluctuate.

The duration for G98002P10 is 126 days with a two-year warranty and vegetation establishment period that starts upon substantial project completion.

The low bid received by the District is lower than budgeted.

RESOLUTION

Award of Contract G98002P10, Bioretention Basins and Turf Naturalization

RESOLVED, by the Milwaukee Metropolitan Sewerage Commission, that the Executive Director is authorized to execute on behalf of the District Contract G98002P10, Bioretention Basins and Turf Naturalization, with C.W. Purpero, Inc., in the amount of \$319,977.



Capital Budget Fiscal Note Total Project Cost

RELATING TO:

Award of Contract G98002P10, Bioretention Basins and Turf Naturalization

Capital Project Number(s)

G98002

Impact of Requested Action on Total Project Cost:

☐

Increase

☐

Decrease

☐

New Project

☒

No Change

Total Project Cost Analysis

Adopted 2021 Total Project Cost

Project Costs

\$3,240,578

Previously Approved Changes

\$0

Approved Total Project Cost

\$3,240,578

Requested Total Project Cost

n/a

Requested (Increase)/Decrease

\$0

Action to be taken to Long-Range Financing Plan to address Total Project Cost change

_____ Transfer from Allowance for Cost and Schedule Changes

_____ Transfer from another project (specify in comments)

_____ Delay Project(s) (specify in comments)

_____ Delete Project(s) (specify in comments)

_____ Other _____

_____ Transfer to Allowance for Cost and Schedule Changes

Comments

There is sufficient funding the request of \$319,997.

Budget Review by:

Christine Durkin

Date:

2/11/2021

Award of Contract G98002P10, Bioretention Basins and Turf Naturalization**Procurement & S/W/MBE Summary Information****Contract #** G98002P10**Cost Center:** PRS**Bioretention Basins and Turf Naturalization****BID SUMMARY**Bid Opening Date: 1/20/2021

	Total	SWMBE	Local
# of Bids	3	0	2
# of Responsive Bids	3	0	2

Bidders	Price	Responsive?	Responsible?	% Sub	% SWMBE
C.W. Purpero, Inc. Oak Creek, WI 53154	\$319,977.00	Responsive	Responsible	36.3%	26.9%
Poblocki Paving Corp. West Allis, WI 53214	\$447,167.00	Responsive	Responsible	Not provided	Not provided
LaLonde Contractors, Inc. Waukesha, WI 53186	\$462,764.38	Responsive	Responsible	Not provided	Not provided

SUBCONTRACTOR INFORMATION

Type	Subcontractor Name	Type of Work	%	Amount
MBE	UPI, LLC New Berlin, WI 53146	Site utilities	10.3%	\$33,111.00
SBE	Natural Landscapes, Inc. Hartland, WI 53029	Landscaping, seeding	16.6%	\$53,038.00
Non-SWMBE	Stark Pavement Corp. Brookfield, WI 53005	Concrete/asphalt paving	7.2%	\$23,000.00
Non-SWMBE	ACME Systems, Inc. Glendale, WI 53209	Irrigation	1.0%	\$3,200.00
Non-SWMBE	T&T Tree Service Burlington, WI 53105	Tree clearing	1.2%	\$3,960.00

ECONOMIC DEVELOPMENT ELEMENTS

Workforce Requirements

Sanitary Sewer Service Area (SSSA)

Employment: 45%

Target Area (TA) Employment: 20%

Apprentices Required: NA

OUTREACH INFORMATION

The Procurement team performed the following outreach: advertised in the Daily Reporter, sent an e-mail notification to all registered firms in the General Services and Landscaping category, sent targeted e-mails to prequalified landscaping firms. The proposal opportunity is also publicly accessible from the MMSD website and Bonfire, the portal used to post RFPs. Bonfire also performs outreach to its users when an RFP is posted.

S/W/MBE Planholders:

Masterwork Construction LLC

Rams Contracting, Ltd

K. Singh & Associates, Inc.

Dakota Intertek Corp

Marek Landscaping, LLC

Property Solutions Contracting LLC

Mid City Corporation

Platt Construction, Inc.

If no or low S/W/MBE participation, explain why:

NA

Additional Comments:

NA

AWARDEE INFORMATION

Company: C.W. Purpero, Inc.

Contact Person: Todd Schmidt

Phone Number: 414-856-2850

E-mail Address: schmidt@purpero.com

EEO DATA

1190 West Rawson Avenue,
Location: Oak Creek, WI 53154

Total # of Employees 64

	<u>Total</u>	<u>%</u>		<u>Total</u>	<u>%</u>
Minorities	<u>4</u>	<u>6.3%</u>	Females	<u>7</u>	<u>10.9%</u>
Asian	<u>0</u>	<u>0.0%</u>	Asian	<u>0</u>	<u>0.0%</u>
Black or African American	<u>1</u>	<u>1.6%</u>	Black or African American	<u>0</u>	<u>0.0%</u>
Hispanic or Latino	<u>3</u>	<u>4.7%</u>	Hispanic or Latino	<u>1</u>	<u>1.6%</u>
Native American	<u>0</u>	<u>0.0%</u>	Native American	<u>0</u>	<u>0.0%</u>
Other Minority	<u>0</u>	<u>0.0%</u>	Other Minority	<u>0</u>	<u>0.0%</u>

Labor Market Availability - Minorities 22.0%

Labor Market Availability - Females 49.0%

COMMISSION FILE NO: 21-040-3 **DATE INTRODUCED:** March 8, 2021

INTRODUCED BY: Executive Director (Signature on File in the Office of the Commission)

REFERRED BY COMMISSION CHAIRPERSON TO: Policy, Finance, and Personnel Committee

RELATING TO: Authorizing the Executive Director to Submit the Water Infrastructure Finance and Innovation Act of 2014 Application and Associated Fee

SUMMARY:

The Commission is requested to authorize the Executive Director to submit an application for a Water Infrastructure Finance and Innovation Act (WIFIA) of 2014 loan and the associated fee of \$100,000.

The WIFIA of 2014 established the WIFIA loan program, a federal credit program administered by the Environmental Protection Agency for eligible water and wastewater infrastructure projects. The WIFIA loan program accelerates investment in the nation's water infrastructure by providing long-term, low cost supplemental loans for regionally and nationally significant projects. A WIFIA loan provides several benefits, including that:

- A single fixed interest rate is established at closing.
- The interest rate is equal to the U.S. Treasury rate of a similar maturity.
- The interest rate is not impacted by the borrower's credit or loan structure.
- The repayment schedule can be customized to anticipated revenues and expenses for the life of the loan.
- The repayment period can be customized up to 35 years after substantial completion.
- Payments may be deferred up to 5 years.

In October 2020, the District submitted a letter of interest to express interest and be considered for the 2021 WIFIA loan process. In January 2021, the District was notified that it was invited to submit an application.

ATTACHMENTS: **BACKGROUND** ☐ **KEY ISSUES** ☐ **RESOLUTION** ☒
FISCAL NOTE ☒ **S/W/MBE** ☐ **OTHER** ☐ _____

PFP_WIFIA_Application_legislative_file.docx
02-15-21

COMMITTEE ACTION: _____ **DATE:** _____

COMMISSION ACTION: _____ **DATE:** _____

SUMMARY (Cont'd)

Authorizing the Executive Director to Submit the Water Infrastructure Finance and Innovation Act of 2014 Application and Associated Fee

The District has identified two capital existing projects and one potential new project that meet the application criteria. The projects to be included in the application are:

1. 30th Street Corridor, West Basin Flood Management Project: \$36.5 million
2. Wilson Park, primarily Reaches 3 and 4: \$39.2 million
3. Dredge Materials Management Facility: \$100 million

The WIFIA loan requires the District to finance 51% of the cost of projects, for which staff anticipates issuing general obligation bonds, consistent with the 2021 Long Range Financing Plan. The interest rates used in WIFIA financing are fixed and match the U.S. Treasury rate of similar maturity. Given current rates, the District could save \$20 million by utilizing WIFIA rather than financing 100% through a general obligation bond.

RESOLUTION

Authorizing the Executive Director to Submit the Water Infrastructure Finance and
Innovation Act of 2014 Application and Associated Fee

RESOLVED, by the Milwaukee Metropolitan Sewerage Commission, that the Executive Director is authorized to submit an application to the Water Infrastructure Finance and Innovation Act Program to finance project expenditures and the application fee in the amount of \$100,000.



Capital Budget Fiscal Note Total Project Cost

RELATING TO:

Authorizing the Executive Director to Submit the Water Infrastructure Finance and Innovation Act of 2014 Application and Associated Fee

Capital Project Number(s)

M07002

Impact of Requested Action on Total Project Cost:☐

Increase

☐

Decrease

☐

New Project

☒

No Change

Total Project Cost Analysis

Adopted 2021 Total Project Cost

Previously Approved Changes

Approved Total Project Cost

Requested Total Project Cost

Requested (Increase)/Decrease

Project Costs

\$2,588,691

\$0

\$2,588,691

n/a

\$0

Action to be taken to Long-Range Financing Plan to address Total Project Cost change

_____ Transfer from Allowance for Cost and Schedule Changes

_____ Transfer from another project (specify in comments)

_____ Delay Project(s) (specify in comments)

_____ Delete Project(s) (specify in comments)

_____ Other _____

_____ Transfer to Allowance for Cost and Schedule Changes

Comments

Budget Review by:

Christine Durkin

Date:

2/9/2021

COMMISSION MEETING

March 22, 2021

EXECUTIVE DIRECTOR'S REPORT

21-003-01

- A. Monthly Reports**
- B. Staff Recognition (Kevin Shafer)**
- C. Veolia Year in Review (Scott Royer)**
- D. Annual Performance Report (Mickie Pearsall)**
- E. Private Property Infiltration and Inflow Emergency Declaration Update (Kevin Shafer)**
- F. Stormwater Tree Project Award (Kevin Shafer)**
- G. Overview of Workforce Development Programs (Pete Coffaro)**

March 2021

Sun	Mon	Tue	Wed	Thu	Fri	Sat
	<i>1</i>	<i>2</i>	<i>3</i>	<i>4</i>	<i>5</i>	<i>6</i>
<i>7</i>	8 Operations Committee-9:00 a.m. PF&P Committee- 9:05 a.m.	<i>9</i>	<i>10</i>	<i>11</i>	<i>12</i>	<i>13</i>
<i>14</i>	<i>15</i>	<i>16</i>	17 ST. PATRICK'S DAY	<i>18</i>	<i>19</i>	<i>20</i>
<i>21</i>	22 Commission-9:00 a.m.	<i>23</i>	<i>24</i>	<i>25</i>	<i>26</i>	<i>27</i>
<i>28</i>	<i>29</i>	<i>30</i>	<i>31</i>			