

WESTERN MILWAUKEE PHASE 2B FLOOD RISK REDUCTION PROJECT



<https://mmsd.com/phase2b>

WESTERN MILWAUKEE PHASE 2B FLOOD RISK REDUCTION PROJECT

Virtual Meeting Agenda

Project Team Introductions

Meeting Housekeeping

Western Milwaukee

Presentation

Q&A – Project Team



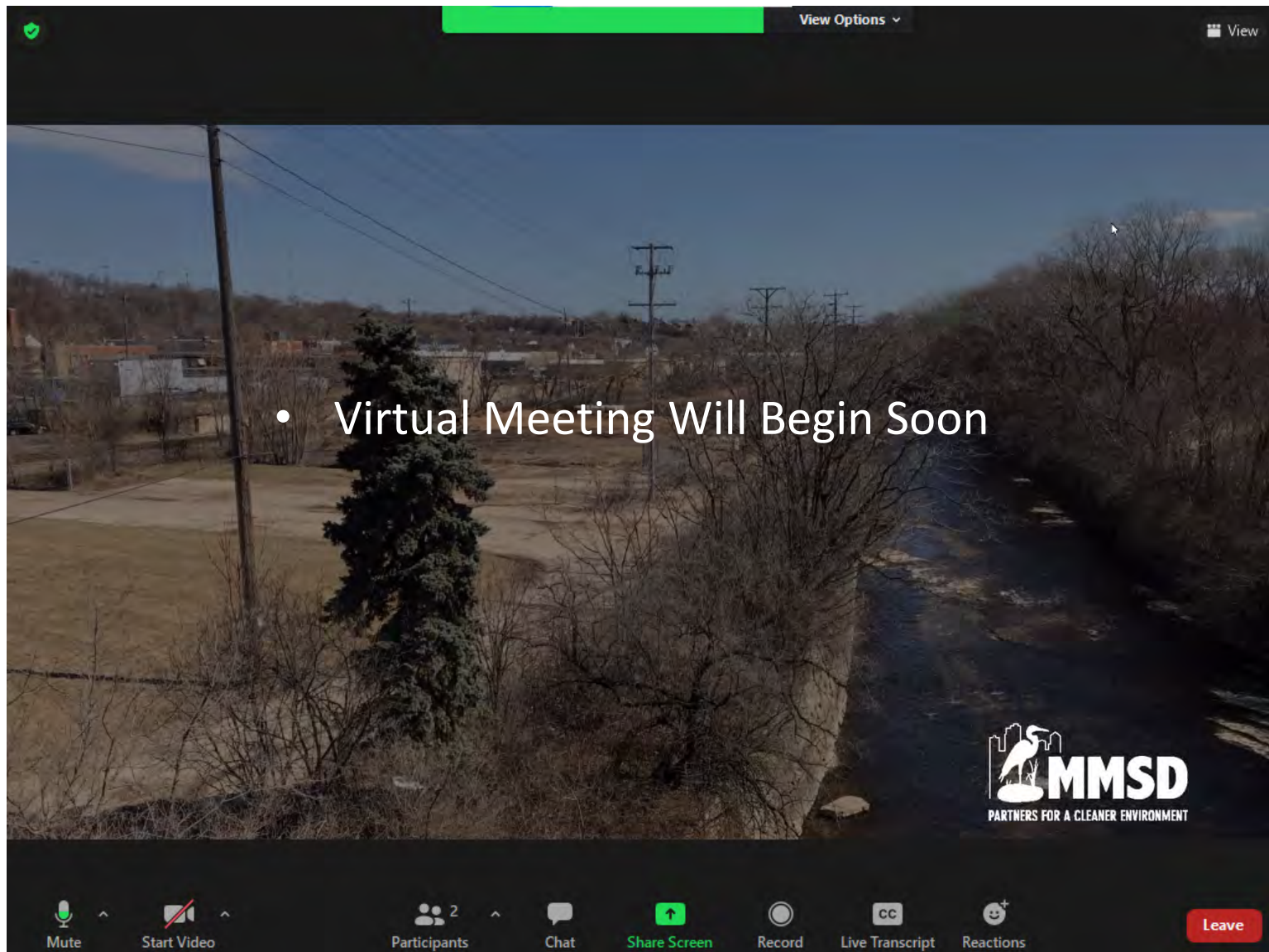
<https://mmsd.com/phase2b>



Project Team

- City of Milwaukee
- City of Wauwatosa
- MMSD
- Stantec Engineering

Housekeeping – IT Tips: Mute, Chat; Q&A at End



• Virtual Meeting Will Begin Soon

Mute Start Video Participants 2 Chat Share Screen Record Live Transcript Reactions Leave

MMSD
PARTNERS FOR A CLEANER ENVIRONMENT

First Brief Meeting Participant Poll

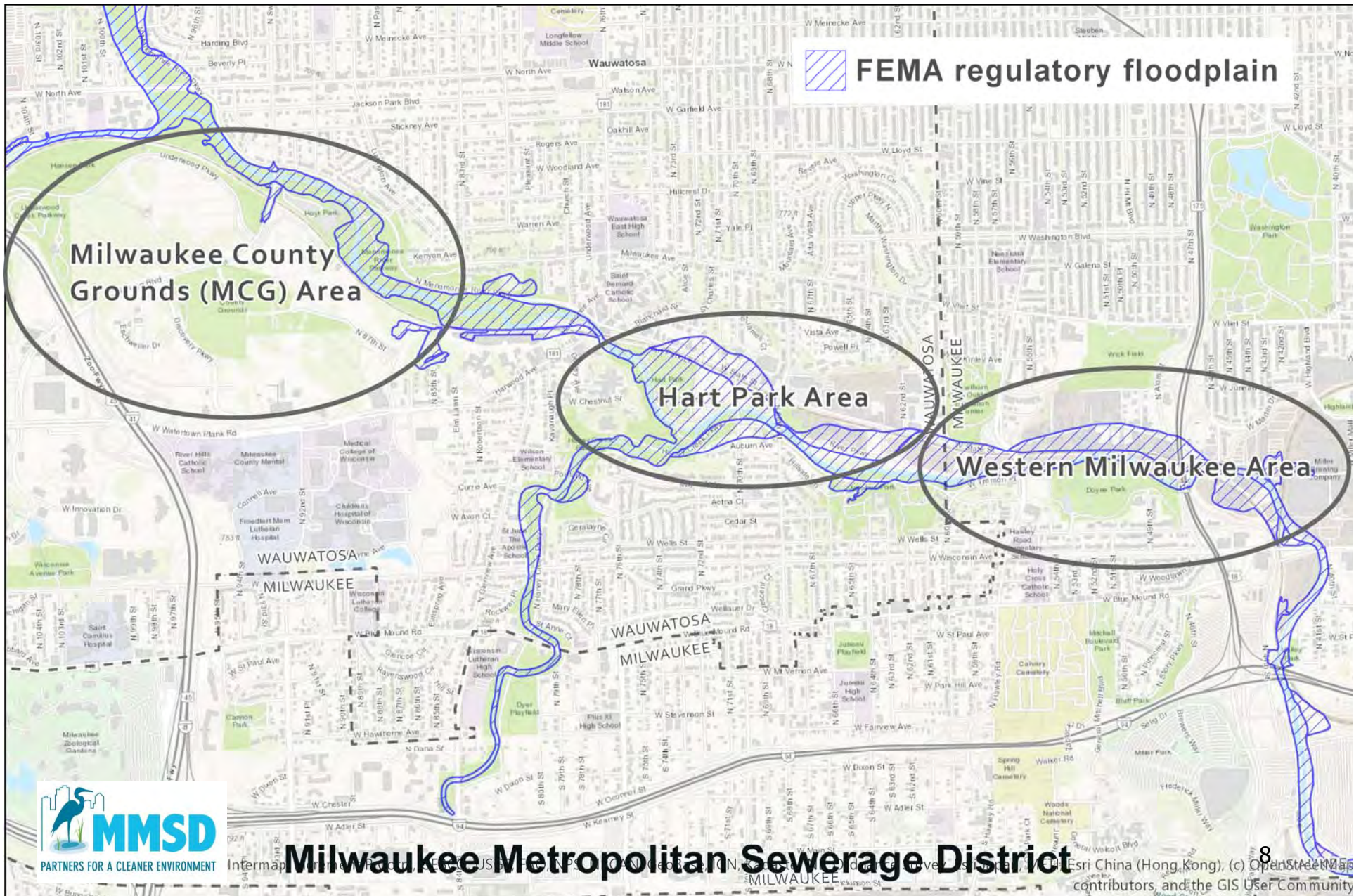


Menomonee River - Western Milwaukee Phase 2B Project

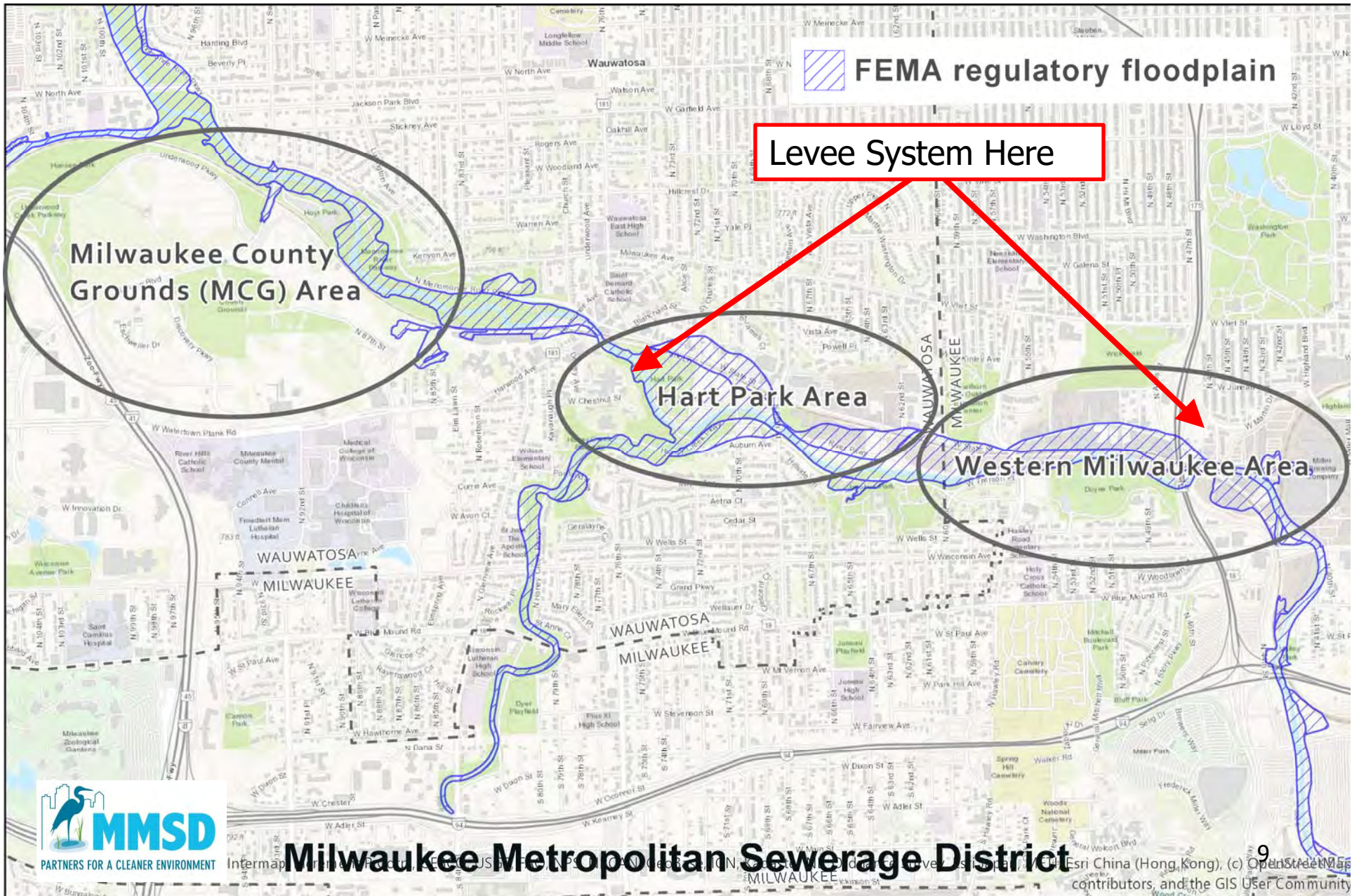


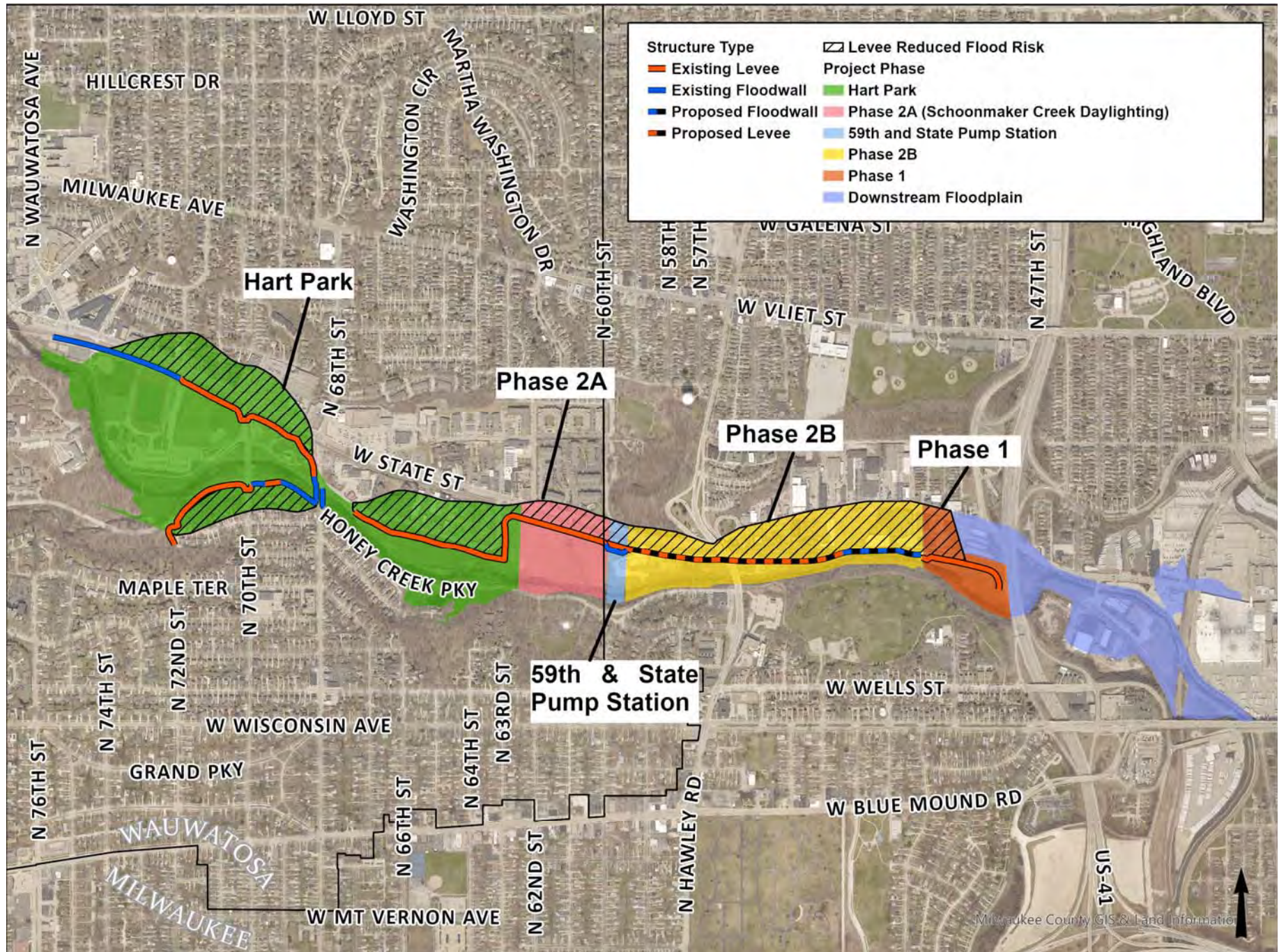


Menomonee River Watercourse Management Plan



Menomonee River Watercourse Management Plan









MMSD's 2035 Vision

Integrated Watershed Management Goals:

Zero sanitary sewer overflows

Zero combined sewer overflows

Zero homes in the 100 year floodplain

Acquire an additional 10,000 acres of river buffers through Greenseams®

Use green infrastructure to capture the first 0.5 inch of rainfall

Harvest the first 0.25 gallon per square foot of area of rainfall

Energy Efficiency and Climate Mitigation & Adaptation Goals:

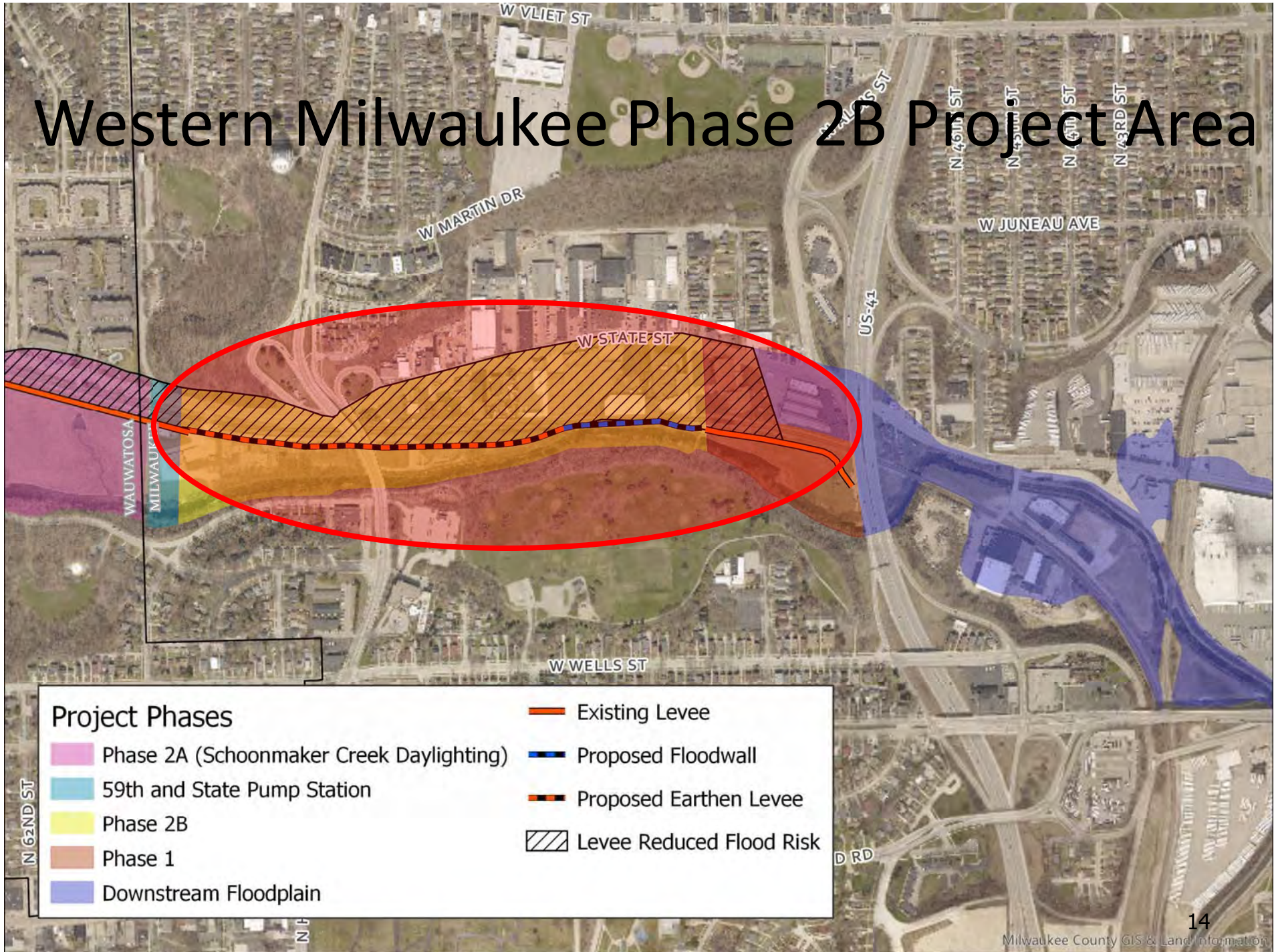
Meet 100% of MMSD's energy needs with renewable energy sources

Meet 80% of MMSD's energy needs with internal, renewable sources

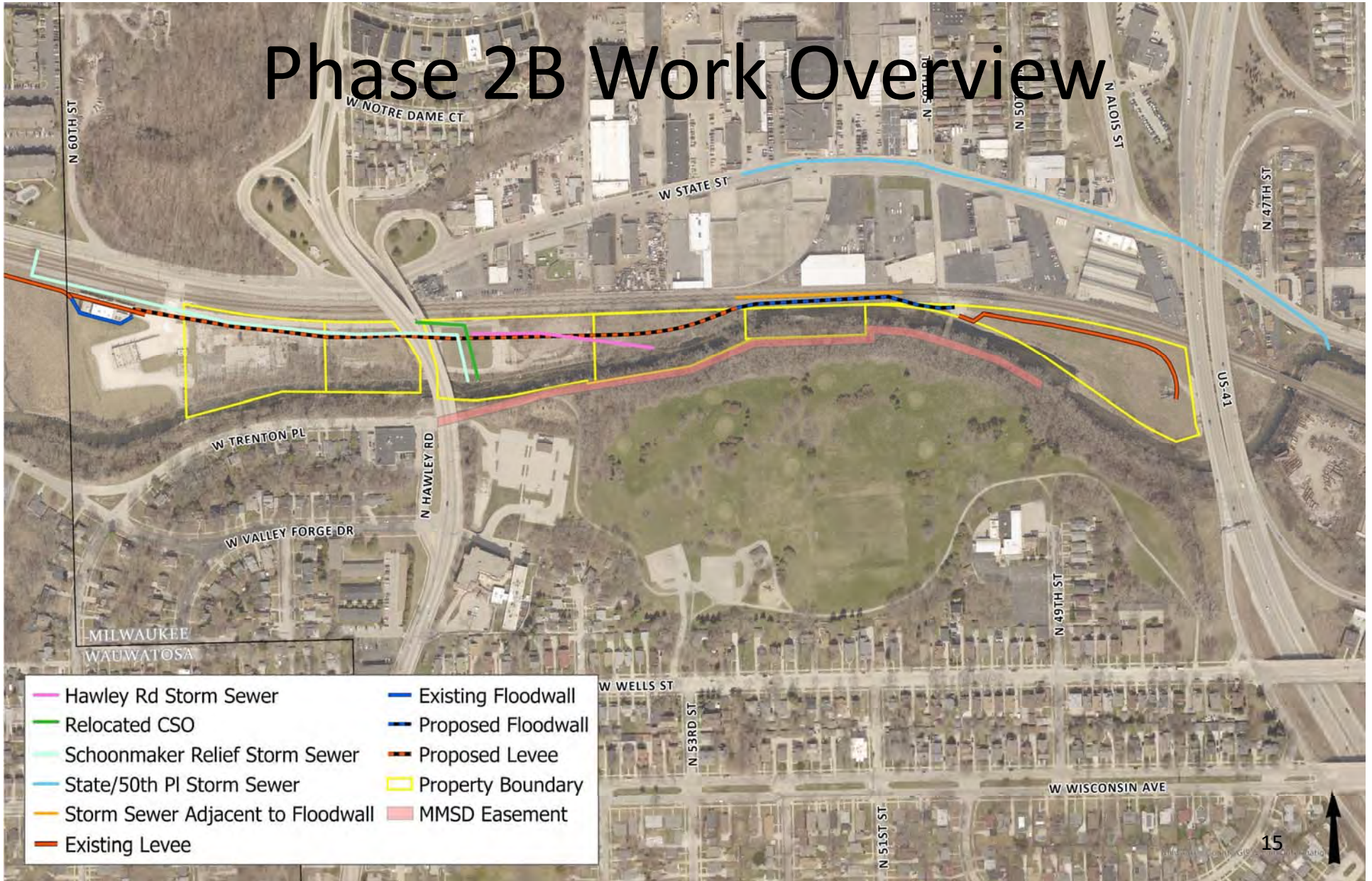
Use the Greenseams® Program to provide for 30% sequestration of MMSD's carbon footprint

Reduce MMSD's carbon footprint by 90% from its 2005 baseline

Western Milwaukee Phase 2B Project Area



Phase 2B Work Overview





Phase 2B Levees and Floodwall

- Proposed Floodwall
- Proposed Levee
- Existing Levee

175

W STATE ST

N HAWLEY RD

Milwaukee County GIS & Land Information

Phase 2B Storm Sewers



Phase 2B Native Plantings and Bank Stabilization





Limestone Block Bank in Hart Park

- Similar limestone block approach will be used to stabilize the river bank downstream of Hawley Road Bridge for the Western Milwaukee Phase 2B Project

- Proposed Floodwall
- Proposed Levee
- Existing Levee
- Property Boundary

Phase 2B Channel Widening Area



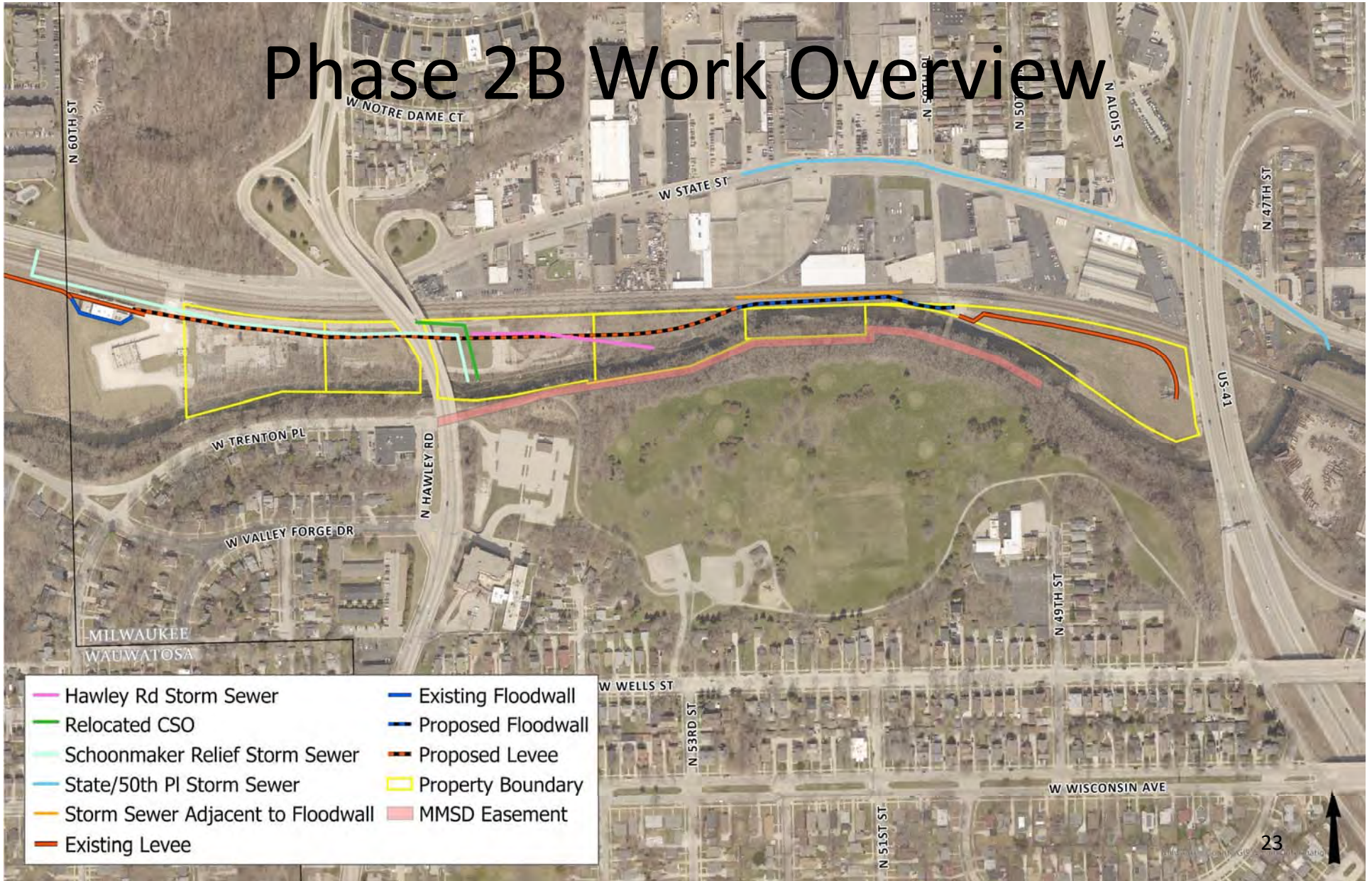
Phase 2B Floodwall and Channel Widening Area



Phase 2B Floodwall and Channel Widening Area



Phase 2B Work Overview



Approximate Project Schedule

Project Phase	Start	Duration
Phase 2B Levee & Floodwall Construction Contract*	Summer 2022	24 months
FEMA Floodplain Map Change Review	2024	36 months

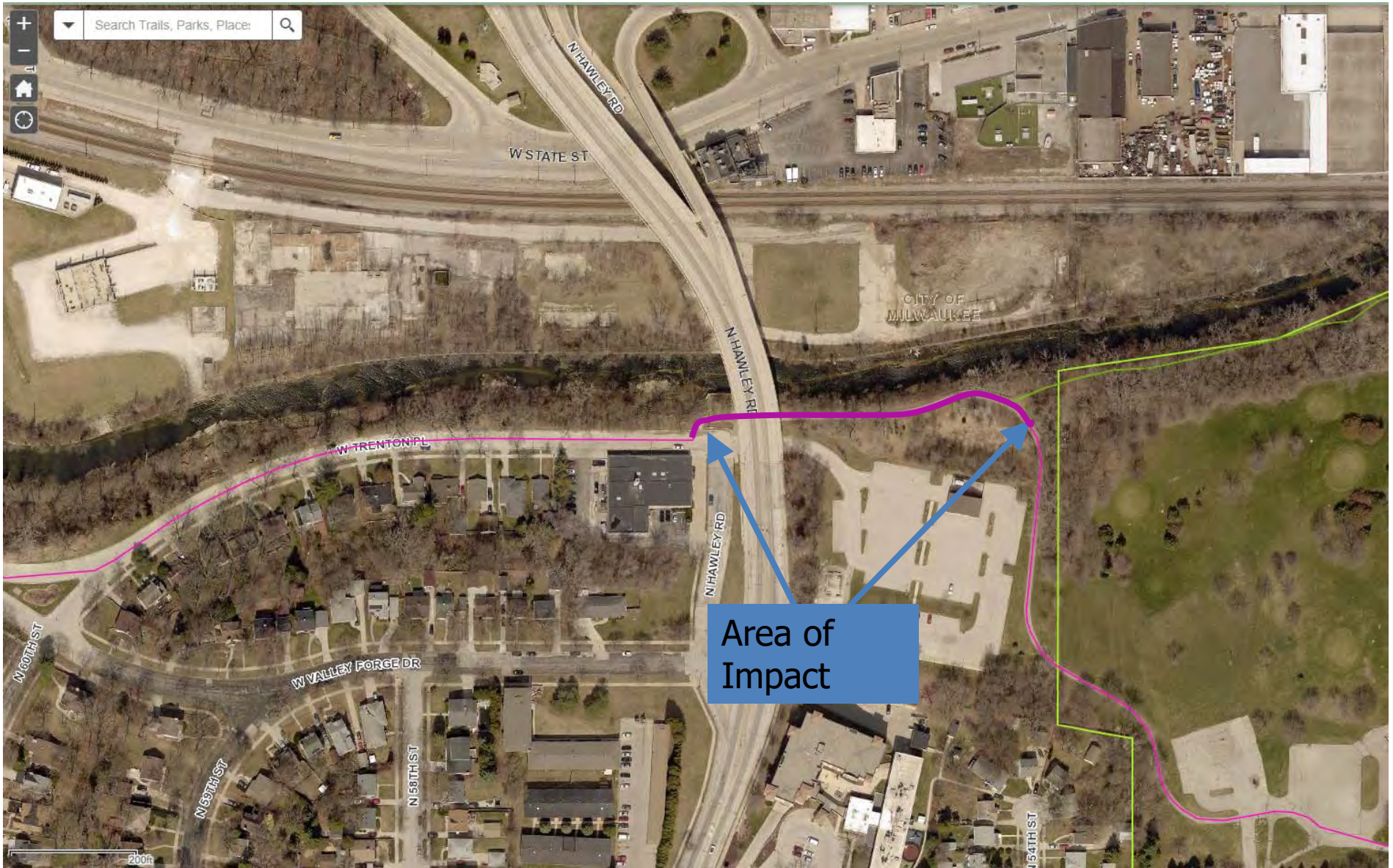
*Requires FEMA review and approval prior to construction; schedule subject to change

State Street Work Requirements

- Maintain two-way traffic
- Driveways will be accessible
- No parking on street where construction is occurring
- Winter season work restrictions



Oak Leaf Trail Temporary Impact Area

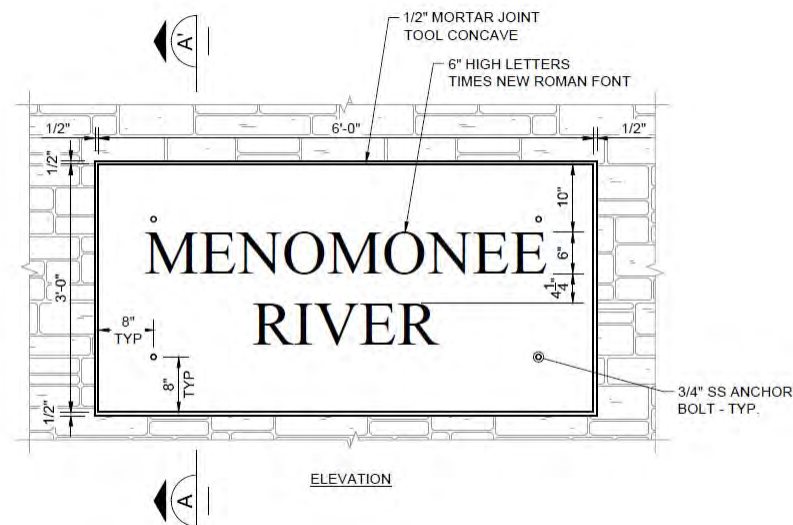


Public Feedback Incorporated into the Project – Tall Trees and Colorful Flowers



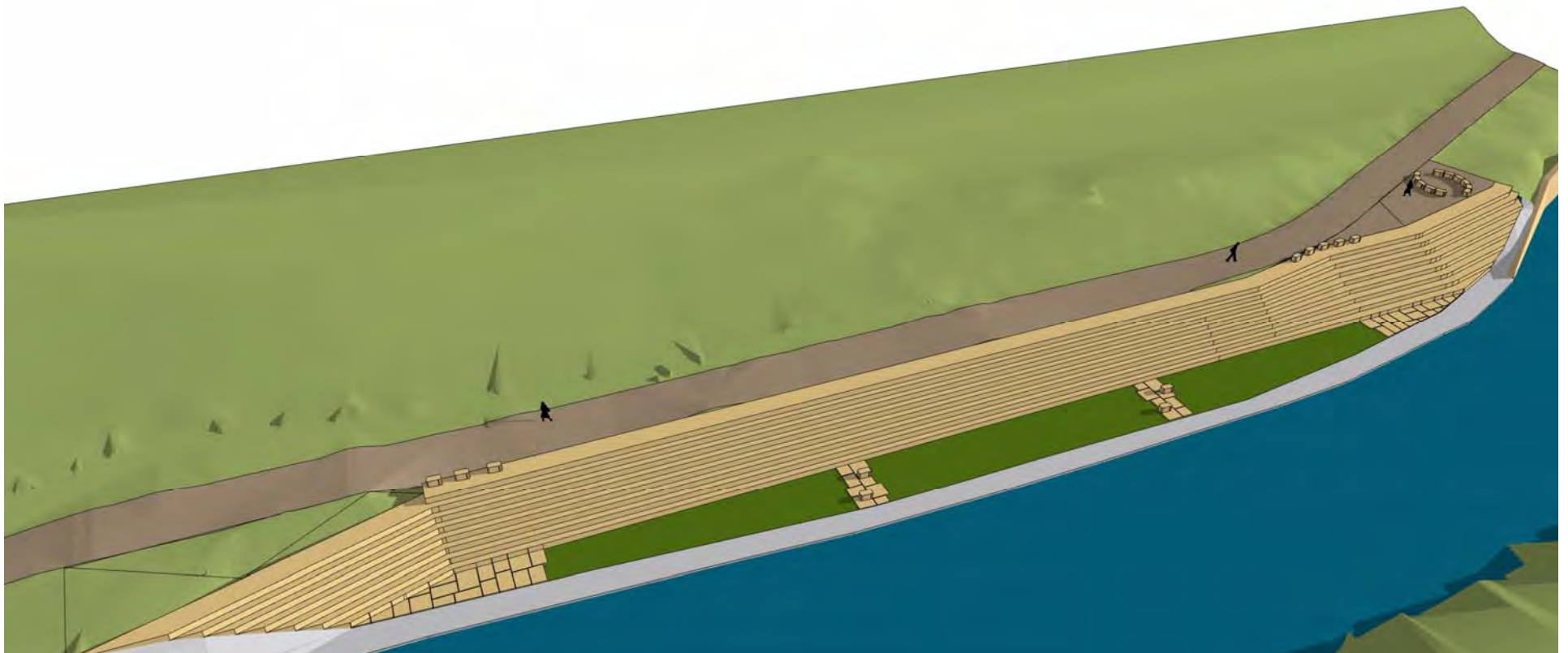
Floodwall Plaque, Past Flood Heights

- Name plate at 3 locations
- Working to add historical flood heights independently of the project



Restoration Along Doyne Park

- Improved trail
- Limestone block resting areas

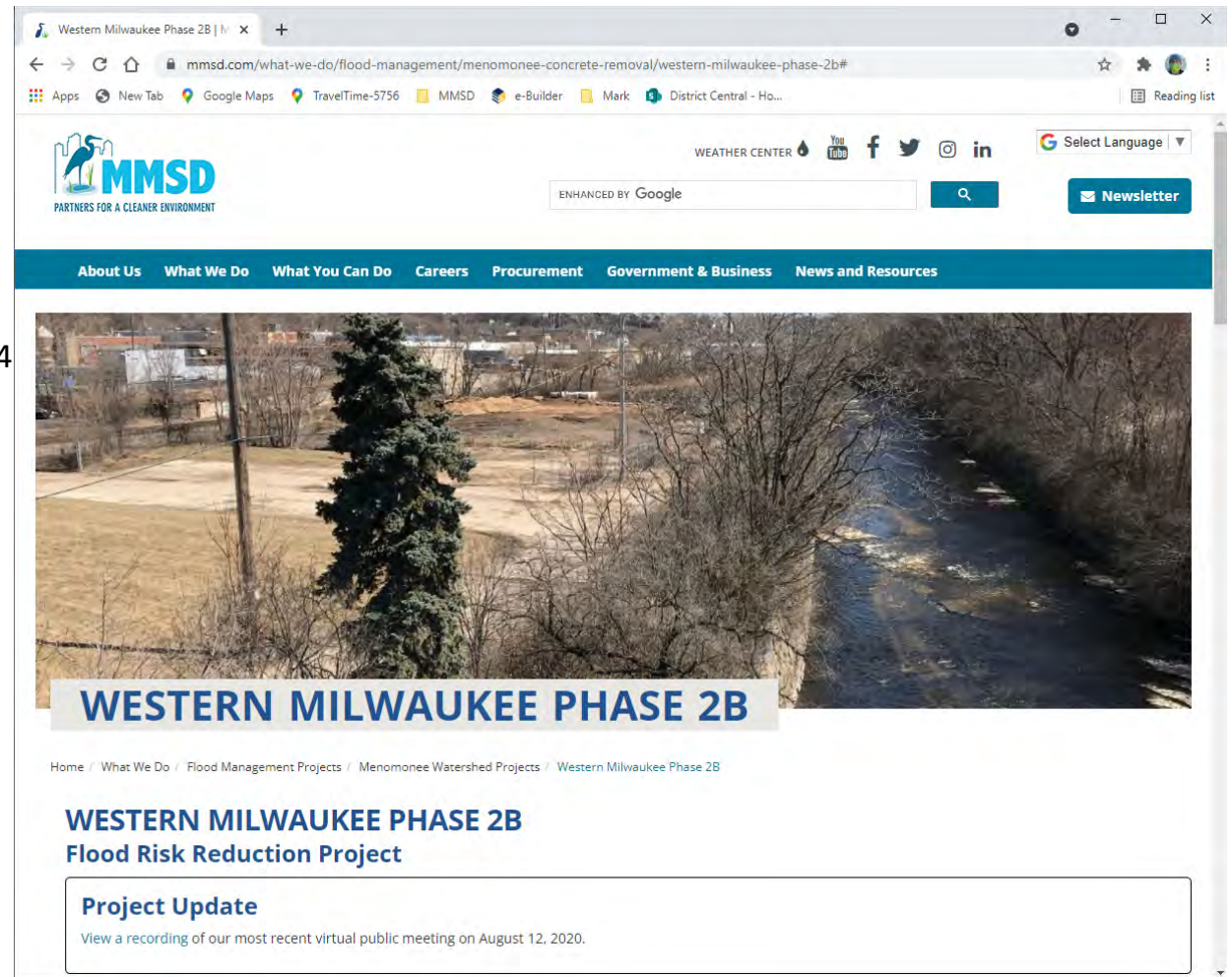


How can I stay informed on the Western Milwaukee Phase 2B Project and learn when construction will start?

<https://mmsd.com/phase2b>

- Project updates
- Project schedule
 - Construction: 2nd half of 2022-2024
 - FEMA Post-Construction Review: 2024-2027
- Signup for e-mail updates and other ways to stay involved
- Leave comments

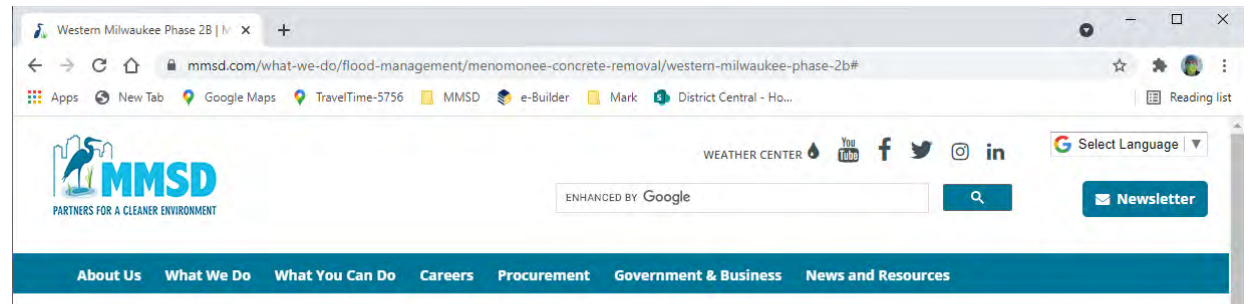
FAQs



The screenshot shows a web browser displaying the MMSD website. The browser's address bar shows the URL: mmsd.com/what-we-do/flood-management/menomonee-concrete-removal/western-milwaukee-phase-2b#. The MMSD logo is visible in the top left corner, with the tagline "PARTNERS FOR A CLEANER ENVIRONMENT". To the right of the logo are social media icons for YouTube, Facebook, Twitter, Instagram, and LinkedIn, along with a "Select Language" dropdown menu. Below the logo is a search bar with the text "ENHANCED BY Google" and a "Newsletter" button. A navigation menu is located below the search bar, with links for "About Us", "What We Do", "What You Can Do", "Careers", "Procurement", "Government & Business", and "News and Resources". The main content area features a large photograph of a construction site with a river in the background. Below the photograph is a blue banner with the text "WESTERN MILWAUKEE PHASE 2B". Underneath the banner is a breadcrumb trail: "Home / What We Do / Flood Management Projects / Menomonee Watershed Projects / Western Milwaukee Phase 2B". The page title is "WESTERN MILWAUKEE PHASE 2B Flood Risk Reduction Project". A "Project Update" section is visible, with a sub-heading "Project Update" and a link to "View a recording of our most recent virtual public meeting on August 12, 2020."

How can I stay informed on the Western Milwaukee Phase 2B Project and learn when construction will start?

<https://mmsd.com/phase2b>



Aerial imagery taken in 2005 is on the left, and 2020 on the right.



What needs to happen before construction can start?

- Federal Emergency Management Agency (FEMA) project approval
 - ~March 2022 estimated timeframe
- Canadian Pacific Railway Agreement
 - ~several months to accomplish
- MMSD public contracting process and contractor preparing to start construction
 - 4 to 5 months
- July 2022 – Earliest estimate of construction start

FAQs



What will happen to the bridge crossing the river at Doyme Park?

- Bridge closed for many years due to safety
- Private bridge near 50th Street contributes to flooding and will be removed
- No plans to replace the bridge
- MMSD supportive of collaborating with local government-led recreational improvements to MMSD projects/property
- Working with Wauwatosa to assess potential of a new recreational trail bridge crossing the river near 63rd Street and Jacobus Park

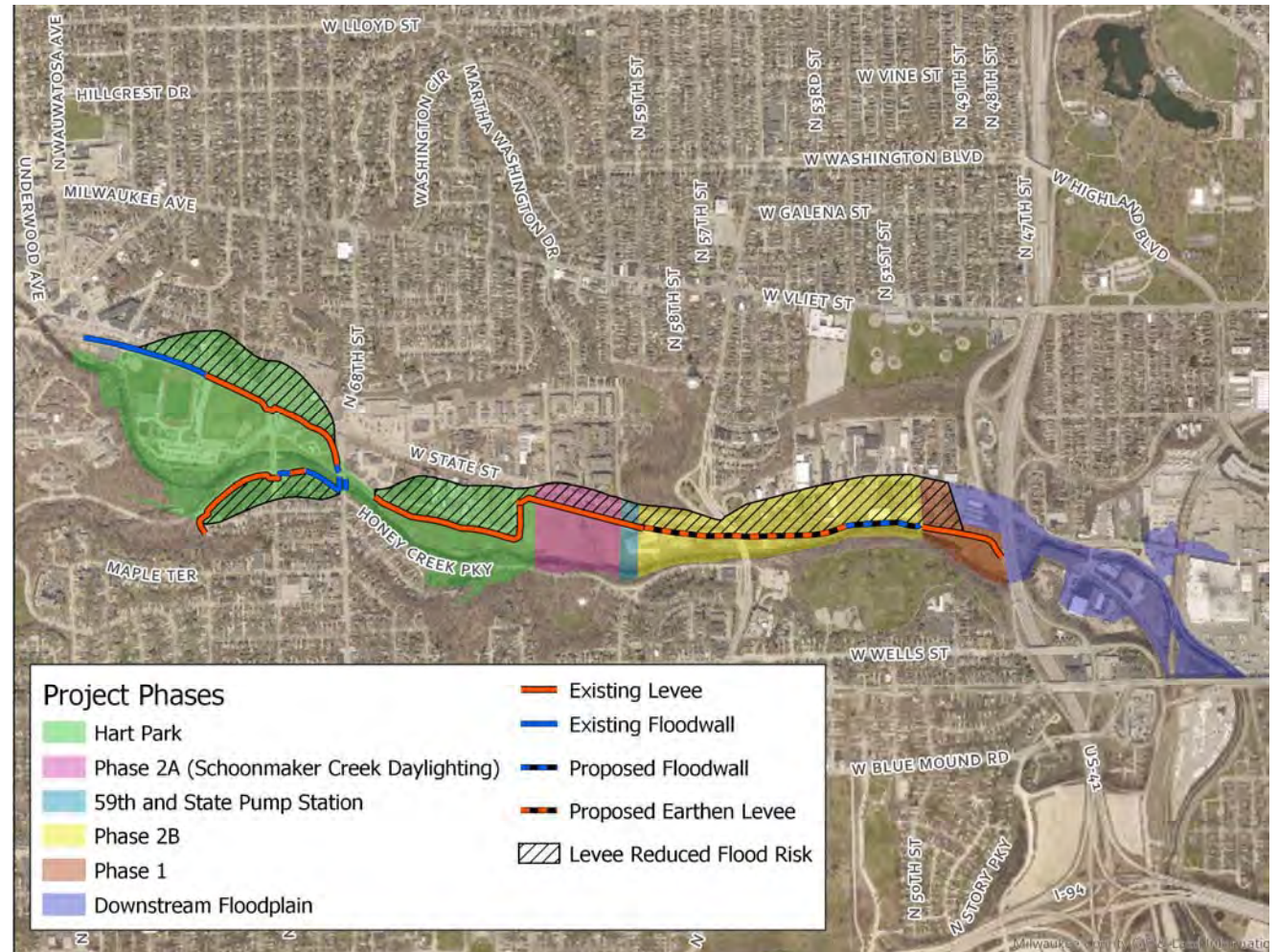
FAQs



When will FEMA recognize the levee flood risk reduction benefits and reduce my flood insurance?

- Estimated Timeline (subject to change)
- 2024 - Phase 2B construction estimated completion
- 2024 - Other levee improvement projects completed
- 2024 - Submit application to FEMA
- 2024-2027 - FEMA review
- 2027 – anticipated floodplain map updated

FAQs





Future Updates

Quarterly updates and at key milestones at project website/email blasts

<https://mmsd.com/phase2b>

NEVER DRIVE AROUND BARRICADES

Most flood fatalities
occur in vehicles

12 inches of fast-moving
water can sweep a car
off the road



[weather.gov/flood](https://www.weather.gov/flood)

3 SIMPLE STEPS FOR FLASH FLOOD SAFETY

During a flood, water levels and the rate at which the water is flowing can quickly change. Remain aware and monitor local radio and television.



[weather.gov/flood](https://www.weather.gov/flood)

1 GET TO HIGHER GROUND

Get out of the areas subject to Flooding

2 DO NOT DRIVE INTO WATER

Do NOT drive or walk into flooded areas. It only takes 6" of water to knock you off your feet.

3 STAY INFORMED

Monitor local radar, television, weather radio, internet or social media for updates.

Second Brief Meeting Participant Poll



Provide comments, ask questions, and more available via project website:
<https://mmsd.com/phase2b>

Question and Answer



Milwaukee Metropolitan Sewerage District