

ELECTRONIC PACKET

March 8, 2021 POLICY, FINANCE, & PERSONNEL COMMITTEE MEETING

RELEASED: Monday, March 1, 2021



Milwaukee Metropolitan Sewerage District

260 West Seeboth
Street
Milwaukee, WI
53204

Meeting Agenda

Policy, Finance & Personnel Committee

Jeff Stone, Chair

Corey Zetts, Vice Chair

Tim Carpenter, Chantia Lewis, Eugene Manzanet

Dan Devine, Ex-Officio

Monday, March 8, 2021

9:05 AM

Teams Online Meeting/Conference Call

NOTICE IS HEREBY GIVEN, pursuant to Section 19.84, Wisconsin Statutes, that the Milwaukee Metropolitan Sewerage District's Policy, Finance and Personnel Committee will hold its regularly scheduled public meeting on Monday, March 8, 2021, at 9:05 a.m. or immediately following the Operations Committee meeting which begins at 9:00 a.m. via Teams online meeting. The weblink to access this meeting is <https://tinyurl.com/y8kpwok>; telephone dial-in is available through 414.909.9127, access code 874 182 41#.

PURSUANT TO SECTION 19.85(1)(g), Wisconsin Statutes, the Committee reserves the right to go into Closed Session on any item on the public portion of the agenda to confer with Legal Counsel when it appears the matter may involve the District in litigation. If the Committee does convene in such a Closed Session, it is contemplated that the Committee will again, before adjourning the meeting, reconvene at the same place in Open Session at which time the Committee may act upon any item(s) considered in the Closed Session and upon any unfinished items from the regular agenda.

CALL TO ORDER

RECORD ROLL

Approval of Proceedings of Regular Committee Meeting held February 8, 2021

NEW BUSINESS

- | | | |
|----|----------|--|
| 10 | 21-034-3 | Agreement between the Milwaukee Metropolitan Sewerage District and Milwaukee County for Kletzsch Dam Repair and Fish Passage Installation and Assume the Inter-Fluve, Inc., Contract from Milwaukee County |
| 11 | 21-035-3 | Settlement of Ferric Chloride Dispute with Veolia Water Milwaukee, LLC |
| 12 | 21-036-3 | Project Partnership Agreement with the United States Army Corps of Engineers for the Kinnickinnic River Reach 3, Project W40007 |
| 13 | 21-037-3 | Agreement between the Milwaukee Metropolitan Sewerage District and Milwaukee County for the Kinnickinnic River Reach 3, Project W40007 |

- 14 21-038-3 Declaration of Excess Lands and Authorization to Transfer One
Greenseams® Purchased Property and to Place a Greenseams®
Conservation Easement over Two Properties Owned by Milwaukee Area
Land Conservancy
- 15 21-039-3 Award of Contract G98002P10, Bioretention Basins and Turf
Naturalization
- 16 21-040-3 Authorizing the Executive Director to Submit the Water Infrastructure
Finance and Innovation Act of 2014 Application and Associated Fee

ORGANIZATION & ADMINISTRATION

21-002-1 EXECUTIVE DIRECTOR'S REPORT

A. Monthly Reports

ADJOURNMENT

PLEASE NOTE: Upon reasonable notice, efforts will be made to accommodate the needs of disabled individuals through sign language interpreters or other auxiliary aids. For additional information or to request these services, contact the Office of the Commission at 414.225.2264, (FAX) 414.272.6360 or write to Office of the Commission, 260 W. Seeboth Street, Milwaukee, Wisconsin, 53204-1446.



Anna Kettlewell, Commission Secretary
Milwaukee Metropolitan Sewerage District



Milwaukee Metropolitan Sewerage District

260 West
Seeboth Street
Milwaukee, WI
53204

Meeting Minutes

Policy, Finance & Personnel Committee

Jeff Stone, Chair

Corey Zetts, Vice Chair

Tim Carpenter, Chantia Lewis, Eugene Manzanet

Dan Devine, Ex-Officio

Monday, February 8, 2021

9:05 AM

Teams Online Meeting/Conference Call

CALL TO ORDER

Committee Chair Commissioner Stone called the meeting to order at 9:41 a.m.

RECORD ROLL

Present 6 - Tim Carpenter, Chantia Lewis, Eugene Manzanet, Jeff Stone, Corey Zetts, and Dan Devine

Other Commissioners Present: Dan Bukiewicz, LaTonya Johnson, Bryan L. Kennedy, Ph.D., Kris Martinsek, and John Swan, III.

Approval of Proceedings of Regular Committee Meeting held January 11, 2021

A motion was made by Commissioner Zetts, seconded by Commissioner Lewis. The motion carried by the following roll call vote:

Yes: 6 - Commissioner Carpenter, Commissioner Lewis, Commissioner Manzanet, Commissioner Stone, Commissioner Zetts and Commissioner Devine

No: 0

NEW BUSINESS

Items 9-12 were taken as a block.

- 9 21-021-2 Agreement between the Milwaukee Metropolitan Sewerage District and the City of Milwaukee Regarding the Western Milwaukee Phase 2B Project W20028

The Committee received a PowerPoint presentation from Michael Martin, Director of Technical Services.

A motion was made by Commissioner Manzanet, seconded by Commissioner Devine, that this matter be approved by a roll call vote. The motion carried by the following roll call vote:

Yes: 5 - Commissioner Carpenter, Commissioner Manzanet, Commissioner Stone, Commissioner Zetts and Commissioner Devine

No: 0

Out of Room: 1 - Commissioner Lewis

10 21-022-2 Authorizing the Executive Director to Continue a Self-insured Workers' Compensation Program

The Committee received a presentation from Mickie Pearsall, Director of Finance and Human Resources.

Commissioner Stone asked for the District's stop loss threshold level for workers' compensation and the District's stop loss ratio.

Commissioner Manzanet requested the analysis to recommend continuing with self-insured workers' compensation.

A motion was made by Commissioner Manzanet, seconded by Commissioner Devine, that this matter be approved by a roll call vote. The motion carried by the following roll call vote:

Yes: 5 - Commissioner Carpenter, Commissioner Manzanet, Commissioner Stone, Commissioner Zetts and Commissioner Devine

No: 0

Out of Room: 1 - Commissioner Lewis

11 21-023-2 Declaration of the Public Necessity and Approval of the Acquisition Plat (Relocation Order) for the Project C05051, Edgewood Avenue Near Surface Collector Extension Project

The Committee received a presentation from Mickie Pearsall, Director of Finance and Human Resources.

A motion was made by Commissioner Manzanet, seconded by Commissioner Devine, that this matter be approved by a roll call vote. The motion carried by the following roll call vote:

Yes: 5 - Commissioner Carpenter, Commissioner Manzanet, Commissioner Stone, Commissioner Zetts and Commissioner Devine

No: 0

Out of Room: 1 - Commissioner Lewis

12 21-024-2 Approval of Job Content Value and Job Title

The Committee received a presentation from Mickie Pearsall, Director of Finance and Human Resources.

It was moved by Commissioner Carpenter, seconded by Commissioner Manzanet, to amend the resolution to reflect that Policy, Finance, and Personnel Committee approval over this matter, not Commission approval; the motion carried.

A motion was made by Commissioner Manzanet, seconded by Commissioner Devine, that this resolution, as amended, be approved by a roll call vote. The motion carried by the following roll call vote:

Yes: 5 - Commissioner Carpenter, Commissioner Manzanet, Commissioner Stone, Commissioner Zetts and Commissioner Devine

No: 0

Out of Room: 1 - Commissioner Lewis

ORGANIZATION & ADMINISTRATION

21-002-1 EXECUTIVE DIRECTOR'S REPORT

A. Monthly Reports

A. No report.

ADJOURNMENT

It was moved by Commissioner Zetts, seconded by Commissioner Manzanet, to adjourn. The motion carried.

As there was no further business, the meeting was adjourned at 10:00 a.m.



Anna Kettlewell, Commission Secretary
Milwaukee Metropolitan Sewerage District

COMMISSION FILE NO: 21-034-3 **DATE INTRODUCED:** March 8, 2021

INTRODUCED BY: Executive Director (Signature on File in the Office of the Commission)

REFERRED BY COMMISSION CHAIRPERSON TO: Policy, Finance, and Personnel Committee

RELATING TO: Agreement between the Milwaukee Metropolitan Sewerage District and Milwaukee County for Kletzsch Dam Repair and Fish Passage Installation and Assume the Inter-Fluve, Inc., Contract from Milwaukee County

SUMMARY:

The Commission is requested to authorize the Executive Director to execute an intergovernmental cooperation agreement (ICA) between the Milwaukee Metropolitan Sewerage District (District) and Milwaukee County (County) for the District to design and construct a fish passage around Kletzsch Dam and implement required repairs to the dam.

Further, the Commission is requested to award and to direct the Executive Director to execute on behalf of the District the contract with Inter-Fluve, Inc., from the County.

Kletzsch Dam is located on the Milwaukee River in the City of Glendale at Kletzsch Park and is owned by Milwaukee County. The dam was built in the mid-1930's and consists of a serpentine-shaped, fixed crest, large stone masonry spillway. It is subject to a repair order from the Wisconsin Department of Natural Resources (WDNR) to address minor operational deficiencies, including vegetation encroachment, masonry facing deterioration, and nonoperating stop-logs.

Kletzsch Dam is currently a barrier to the migration of many native fish species. Ensuring that native fish can migrate from Lake Michigan to spawning and juvenile rearing habitats upstream of the dam in the Milwaukee River and its tributaries is a priority for restoring and maintaining the ecological health of the Milwaukee River and Lake Michigan. Reestablishing aquatic organism passage at Kletzsch Dam is identified as a necessary project to address the Fish and Wildlife Habitat Beneficial Use Impairment for the Milwaukee Estuary Area of Concern (AOC).

ATTACHMENTS: **BACKGROUND** ☐ **KEY ISSUES** ☐ **RESOLUTION** ☒
FISCAL NOTE ☐ **S/W/MBE** ☐ **OTHER** ☐

PPF_Kletzsch_ICA_and_Assume_InterFluve_Contract_legislative_file.docx
02-22-21

COMMITTEE ACTION: _____ **DATE:** _____

COMMISSION ACTION: _____ **DATE:** _____

SUMMARY (Cont'd)

Agreement between the Milwaukee Metropolitan Sewerage District and Milwaukee County for Kletsch Dam Repair and Fish Passage Installation and Assume the Inter-Fluve, Inc., Contract from Milwaukee County

An AOC is an area that has experienced significant environmental degradation and a resource that the public is unable to fully use in a safe or beneficial way. The Milwaukee River Estuary was designated as an AOC in the 1980's, because historical contamination impaired public benefits, such as water quality, fish consumption, healthy fisheries, and wildlife habitat. The Milwaukee River Estuary includes portions of the three major rivers in Milwaukee (the Milwaukee, the Menomonee, and the Kinnickinnic Rivers) and Lake Michigan.

In 2017, the County entered into an agreement with WDNR to design and construct fish passage at Kletsch Dam in conjunction with the planned dam repair work. The County hired Inter-Fluve, Inc., through a competitive selection process to develop the design. Several alternatives were analyzed, and a preferred alternative was selected; however, due to opposition from members of the public, the County chose not to implement this alternative.

Through subsequent discussions among the County, the District, and WDNR, it was concluded that the District's assistance would benefit the project. This is largely due to the District's experience in watercourse work and recent success on similar projects. The parties will work together to ensure any repairs or alterations to the Kletsch Park Dam do not increase the risk of regional flooding. The County and District have proposed developing an ICA that would include transfer of available funding to the District to continue the design of a fish passage solution. The ICA also would include assigning the Inter-Fluve, Inc., contract from the County to the District. Approximately \$200,000 of the available funding is remaining in the Inter-Fluve, Inc., contract. The responsibility for the dam repair design and implementation would also be transferred to the District to maintain the efficiencies associated with completing the work together. The District will not be responsible for financing the project in absence of grant funding.

District responsibilities under an ICA will include:

- Implementing the repair of Kletsch Dam and install fish passage;
- Providing the County the opportunity to provide input into the design of the project;
- Assuming the contract between the County and Inter-Fluve, Inc., and modifying the contract as appropriate;
- Acquiring real estate interests necessary to construct the project;
- Overseeing management of any hazardous materials encountered in constructing the project;
- Performing resident inspection and resident engineering for the project;
- Supporting efforts to secure additional grant funds for the project; and
- Ensuring establishment of vegetation and management of invasive species for a minimum of three years post-construction.

SUMMARY (Cont'd)

Agreement between the Milwaukee Metropolitan Sewerage District and Milwaukee County for Kletzsch Dam Repair and Fish Passage Installation and Assume the Inter-Fluve, Inc., Contract from Milwaukee County

The County's responsibilities under the ICA will include:

- Relocating any County utilities or assets necessary to complete the project;
- Reviewing and comment on plans, specifications, solicitations for contracts, and proposed contract modifications;
- Assigning the Inter-Fluve, Inc., contract to the District;
- Supporting outreach efforts, presenting project progress to the County Board, and seeking any necessary approvals from the County Board;
- Consulting with the District and execute any necessary real estate documents;
- Releasing any unspent grant funds to the District, fulfilling any obligations to provide matching funds, and coordinating with the District on efforts to secure additional grant funds for the project; and
- Owning, operating, and maintaining the project following substantial completion.

RESOLUTION

Agreement between the Milwaukee Metropolitan Sewerage District and Milwaukee County for Kletzsch Dam Repair and Fish Passage Installation and Assume the Inter-Fluve, Inc., Contract from Milwaukee County

RESOLVED, by the Milwaukee Metropolitan Sewerage Commission, that the Executive Director is authorized to execute an intergovernmental cooperation agreement between the Milwaukee Metropolitan Sewerage District and Milwaukee County for Kletzsch Dam repair and fish passage installation as described herein.

FURTHER RESOLVED, by the Milwaukee Metropolitan Sewerage Commission, that the Executive Director is authorized to assume the Inter-Fluve, Inc., contract from Milwaukee County.

COMMISSION FILE NO: 21-035-3 **DATE INTRODUCED:** March 8, 2021

INTRODUCED BY: Executive Director (Signature on File in the Office of the Commission)

REFERRED BY COMMISSION CHAIRPERSON TO: Policy, Finance, and Personnel Committee

RELATING TO: Settlement of Ferric Chloride Dispute with Veolia Water Milwaukee, LLC

SUMMARY:

The Commission is requested to adopt a proposed settlement of a claim by Veolia Water Milwaukee, LLC, (Veolia) regarding the ferric chloride dispute.

In November 2019, the District ordered its contract operator, Veolia, to feed ferric chloride to the primary treatment process at the South Shore Water Reclamation Facility (SSWRF) at the rate of four gallons per minute in response to repeated violations of contract effluent standards in 2017, 2018, and 2019.

Veolia disputed the District's authority to direct it to feed ferric chloride to the primary treatment process at SSWRF and made a claim for the additional ferric chloride expenditures, ranging from \$85,000 to \$95,000 per month.

The District is recommending settlement of this matter for \$400,000. The District has rescinded its order to Veolia to feed ferric chloride to the primary treatment process at SSWRF.

ATTACHMENTS: **BACKGROUND** ☐ **KEY ISSUES** ☐ **RESOLUTION** ☒
FISCAL NOTE ☒ **S/W/MBE** ☐ **OTHER** ☐ _____

PFP_VWM_Ferric_Chloride_Settlement_legislative_file.docx
02-15-21

COMMITTEE ACTION: _____ **DATE:** _____

COMMISSION ACTION: _____ **DATE:** _____

RESOLUTION

Settlement of Ferric Chloride Dispute with Veolia Water Milwaukee, LLC

RESOLVED, by the Milwaukee Metropolitan Sewerage Commission, that the proposed settlement of a claim made by Veolia Water Milwaukee, LLC, for the cost of ferric chloride in the amount of \$400,000 is approved.

FURTHER RESOLVED, by the Milwaukee Metropolitan Sewerage Commission, that the Executive Director is authorized to execute the documents necessary to effectuate this settlement.



O&M Budget Fiscal Note

RELATING TO:

Settlement of Ferric Chloride Dispute with Veolia Water Milwaukee, LLC

Cost Center: OCC _____	Line Item: 643-1 _____																
Line Item Impact <table style="width: 100%; border-collapse: collapse;"> <tr> <td style="width: 60%;">2021 Original Budget</td> <td style="text-align: right; border-bottom: 1px solid black;">\$50,014,707</td> </tr> <tr> <td>Carryovers or Transfers</td> <td style="text-align: right; border-bottom: 1px solid black;">\$0</td> </tr> <tr> <td>Adjusted Budget</td> <td style="text-align: right; border-bottom: 1px solid black;">\$50,014,707</td> </tr> <tr> <td>Estimated Annual Expenditure including Request</td> <td style="text-align: right; border-bottom: 1px solid black;">\$50,014,707</td> </tr> <tr> <td>Anticipated Year End Balance</td> <td style="text-align: right; border-bottom: 1px solid black;">\$0</td> </tr> <tr> <td>Actual Year to Date Expenditures Through</td> <td style="text-align: right; border-bottom: 1px solid black;">\$0</td> </tr> </table> <p>For unfavorable Year End Balance, identify funding source:</p> <div style="margin-left: 40px;"> <input type="checkbox"/> Absorbed within the Division <input type="checkbox"/> Other Division <input type="checkbox"/> Unallocated Reserve </div>		2021 Original Budget	\$50,014,707	Carryovers or Transfers	\$0	Adjusted Budget	\$50,014,707	Estimated Annual Expenditure including Request	\$50,014,707	Anticipated Year End Balance	\$0	Actual Year to Date Expenditures Through	\$0				
2021 Original Budget	\$50,014,707																
Carryovers or Transfers	\$0																
Adjusted Budget	\$50,014,707																
Estimated Annual Expenditure including Request	\$50,014,707																
Anticipated Year End Balance	\$0																
Actual Year to Date Expenditures Through	\$0																
<table style="width: 100%; border-collapse: collapse;"> <thead> <tr> <th style="text-align: left; width: 35%;">Anticipated Expenditure Timing</th> <th style="text-align: center; width: 20%;">Requested Expenditures</th> <th style="text-align: center; width: 20%;">Anticipated Savings/Revenues</th> <th style="text-align: center; width: 25%;">Net Fiscal Impact</th> </tr> </thead> <tbody> <tr> <td>Current Year (2021)</td> <td style="text-align: center; border-bottom: 1px solid black;">\$400,000</td> <td style="text-align: center; border-bottom: 1px solid black;">\$0</td> <td style="text-align: center; border-bottom: 1px solid black;">\$400,000</td> </tr> <tr> <td>Subsequent</td> <td style="text-align: center; border-bottom: 1px solid black;">\$0</td> <td style="text-align: center; border-bottom: 1px solid black;">\$0</td> <td style="text-align: center; border-bottom: 1px solid black;">\$0</td> </tr> <tr> <td>Total Cost</td> <td style="text-align: center; border-bottom: 1px solid black;">\$400,000</td> <td style="text-align: center; border-bottom: 1px solid black;">\$0</td> <td style="text-align: center; border-bottom: 1px solid black;">\$400,000</td> </tr> </tbody> </table>		Anticipated Expenditure Timing	Requested Expenditures	Anticipated Savings/Revenues	Net Fiscal Impact	Current Year (2021)	\$400,000	\$0	\$400,000	Subsequent	\$0	\$0	\$0	Total Cost	\$400,000	\$0	\$400,000
Anticipated Expenditure Timing	Requested Expenditures	Anticipated Savings/Revenues	Net Fiscal Impact														
Current Year (2021)	\$400,000	\$0	\$400,000														
Subsequent	\$0	\$0	\$0														
Total Cost	\$400,000	\$0	\$400,000														

Comments: This is accrued as a 2020 expense.

Budget Review by:

Theresa Zwieg _____

Date

_____ 2/8/2021

COMMISSION FILE NO: 21-036-3 **DATE INTRODUCED:** March 8, 2021

INTRODUCED BY: Executive Director (Signature on File in the Office of the Commission)

REFERRED BY COMMISSION CHAIRPERSON TO: Policy, Finance, and Personnel Committee

RELATING TO: Project Partnership Agreement with the United States Army Corps of Engineers for the Kinnickinnic River Reach 3, Project W40007

SUMMARY:

The Commission is requested to authorize the Executive Director to execute a project partnership agreement (PPA) with the United States Army Corps of Engineers (USACE) for the Kinnickinnic (KK) River Reach 3, Project W40007, to be the non-federal sponsor agreeing to pay or provide in-kind services for project costs currently valued at \$5,159,479.

The updated KK River Watercourse Management Plan, approved by the Commission on July 22, 2019, includes recommendations to replace the concrete channel lining along Reach 3 of the KK River between S. 27th Street and the KK River Parkway in Jackson Park with a naturalized stream. The concrete channel lining is a District asset that was installed in the 1960's. The lining is significantly degraded throughout the project area and reaching the end of its useful life. The proposed naturalized channel will improve public safety by slowing down flood flows, provide long term streambank stabilization, and enhance the habitat value of the riparian corridor.

At the request of the District, in 2011, USACE began the process for determining their involvement in funding and undertaking the KK River Reach 3 Project. Since then, USACE has completed all steps necessary to execute a PPA with the District, and they have obtained the necessary funding for the project to proceed. The PPA sets forth terms and conditions for project implementation by USACE, including how costs and responsibilities will be shared between USACE and the District.

ATTACHMENTS: **BACKGROUND** ☐ **KEY ISSUES** ☐ **RESOLUTION** ☒
FISCAL NOTE ☒ **S/W/MBE** ☐ **OTHER** ☐ _____

PPF_KKR3_W40007_USACE_PPA_2nd_Update_legislative_file.docx
02-11-21

COMMITTEE ACTION: _____ **DATE:** _____

COMMISSION ACTION: _____ **DATE:** _____

SUMMARY (Cont'd)

Project Partnership Agreement with the United States Army Corps of Engineers for the Kinnickinnic River Reach 3, Project W40007

In December 2018, the Commission authorized the District to enter a PPA with USACE for the KK River Reach 3 project. As the USACE has their own processes to develop and execute a PPA, they did not proceed with executing the PPA at that time. The USACE changed the office from which the project was administered from their Detroit office to their Chicago office and changed project managers. USACE added the replacement of a pedestrian bridge to the project. USACE has indicated that they are now ready to proceed with the PPA; however, given the project delays and additional scope, USACE had to update the PPA and its cost estimates and revise the cost sharing.

The table below summarizes cost sharing between USACE and the District. Ecosystem restoration consists of the concrete channel removal and stream corridor naturalization. The recreation element consists of replacing Milwaukee County's pedestrian bridge over the KK River at S. 31st Street. Costs include design, construction, real estate, construction management and other costs associated with the project. The District's total cost share also includes \$234,839 for 50% of the remaining costs of work the USACE previously performed on this project's feasibility study.

Project Element	USACE Cost Share*		District Cost Share		Total \$
Ecosystem Restoration	65%	\$ 8,870,438	35%	\$ 4,776,390	\$13,646,828
Recreation	50%	\$148,250	50%	\$148,250	\$ 296,500
Remaining Feasibility Study Costs	50%	\$234,839	50%	\$234,839	\$469,678
Total		\$ 9,253,527		\$5,159,479	\$14,413,006

*USACE will fund up to a maximum amount of \$10,000,000, exclusive of the feasibility study.

These updates increase the cost estimate developed in December 2018 by \$2,229,042 and increased the District's cost share by \$682,632.

SUMMARY (Cont'd)

Project Partnership Agreement with the United States Army Corps of Engineers for the Kinnickinnic River Reach 3, Project W40007

Under the PPA, the District will:

- Participate on the project coordination team, which oversees all aspects of the project design, construction, and dispute resolution;
- Collect field data (e.g., survey);
- Provide comments on all project documents;
- Obtain required permitting and real estate;
- Assess the potential for contamination at the site;
- Manage disposal of excess excavated material and hazardous materials encountered during the project; and
- Operate and maintain the project once completed.

The cost of the District performing these activities above (except for post-construction operation and maintenance) count toward the District's cost share.

USACE will:

- Participate on the project coordination team;
- Manage the project design in consultation with the District;
- Publicly bid and manage construction contractors and all construction;
- Prepare a monitoring, operations, and maintenance plan for the District; and
- Provide quarterly progress reports to the District.

This project is located entirely on land owned by Milwaukee County. Under a separate Commission request, the District is requesting authorization to enter into an agreement with Milwaukee County that will address rights to construct this project as well as long term project improvement ownership, operation and maintenance.

This request supersedes the authorization provided by the Commission under Resolution No. 18-124-12 in December 2018.

RESOLUTION

Project Partnership Agreement with the United States Army Corps of Engineers for the Kinnickinnic River Reach 3, Project W40007

RESOLVED, by the Milwaukee Metropolitan Sewerage Commission, that the Executive Director is authorized to enter into a project partnership agreement with the United States Army Corps of Engineers for the Kinnickinnic River Reach 3, Project W40007, to be the nonfederal project sponsor agreeing to pay or provide in-kind services for project costs currently valued at \$5,159,479.



Capital Budget Fiscal Note

Total Project Cost

RELATING TO:

Project Partnership Agreement with the United States Army Corps of Engineers for the Kinnickinnic River Reach 3, Project W40007

Capital Project Number(s)

W40007

Impact of Requested Action on Total Project Cost:

☐ Increase ☐ Decrease ☐ New Project ☒ No Change

Total Project Cost Analysis

Adopted 2021 Total Project Cost
Previously Approved Changes
Approved Total Project Cost
Requested Total Project Cost
Requested (Increase)/Decrease

Project Costs

\$14,350,727
\$0
\$14,350,727
n/a
\$0

Action to be taken to Long-Range Financing Plan to address Total Project Cost change

_____ Transfer from Allowance for Cost and Schedule Changes
_____ Transfer from another project (specify in comments)
_____ Delay Project(s) (specify in comments)
_____ Delete Project(s) (specify in comments)
_____ Other _____
_____ Transfer to Allowance for Cost and Schedule Changes

Comments

Budget Review by:

Theresa Zwieg

Date:

2/10/2020

COMMISSION FILE NO: 21-037-3 **DATE INTRODUCED:** March 8, 2021

INTRODUCED BY: Executive Director (Signature on File in the Office of the Commission)

REFERRED BY COMMISSION CHAIRPERSON TO: Policy, Finance, and Personnel Committee

RELATING TO: Agreement between the Milwaukee Metropolitan Sewerage District and Milwaukee County for the Kinnickinnic River Reach 3, Project W40007

SUMMARY:

The Commission is requested to authorize the Executive Director to execute an intergovernmental cooperation agreement (ICA) between the Milwaukee Metropolitan Sewerage District (District) and Milwaukee County (County) for the Kinnickinnic (KK) River Reach 3, Project W40007, in an amount not to exceed \$350,000

The updated KK River Watercourse Management Plan, approved by the Commission on July 22, 2019, includes recommendations to replace the concrete channel lining along Reach 3 of the KK River between S. 27th Street and the KK River Parkway in Jackson Park with a naturalized stream. The concrete channel lining is a District asset that was installed in the 1960's. The lining is significantly degraded throughout the project area and reaching the end of its useful life. The proposed naturalized channel will improve public safety by slowing down flood flows, providing long term streambank stabilization, and enhancing the habitat value of the riparian corridor.

Under a separate Commission request, the District is requesting to execute a project partnership agreement (PPA) with the United States Army Corps of Engineers (USACE) for the design and construction of the KK River Reach 3 project. Under the terms of the PPA, the USACE will design and construct the project and provide approximately \$9 million in federal funding for the project. The District will be the non-federal sponsor and provide approximately \$5 million for the project.

ATTACHMENTS: **BACKGROUND** ☐ **KEY ISSUES** ☐ **RESOLUTION** ☒
FISCAL NOTE ☒ **S/W/MBE** ☐ **OTHER** ☐ _____

PFP_County_ICA_KK_River_R3_legislative_file.docx
02-15-21

COMMITTEE ACTION: _____ **DATE:** _____

COMMISSION ACTION: _____ **DATE:** _____

SUMMARY (Cont'd)

Agreement between the Milwaukee Metropolitan Sewerage District and Milwaukee County for the Kinnickinnic River Reach 3, Project W40007

The KK River Reach 3 project is located on land owned by the County. The proposed work, as described in the PPA, will have direct and indirect impacts on County-owned park facilities within the project area, including the removal and replacement of the pedestrian bridge over the KK River at S. 31st Street and existing trees along the parkway. District staff has negotiated an ICA between the District and the County to implement the KK River Reach 3 project under the PPA with the USACE. The following are key agreement terms.

The District responsibilities are to:

- Act as the non-federal sponsor in the PPA with the USACE including payment of all non-federal sponsor contributions currently estimated at \$5,159,479.
- Pay the County for trees removed within the project area in an amount not to exceed \$350,000.
- Provide the County with opportunities to review and comment upon all designs prior to the public bidding phase and review of construction contract change orders; however, the USACE has exclusive control to award contracts and execute contract change orders.
- Include County staff in the key project decision making processes during the design phase.
- Provide public outreach and opportunities for public input.
- Obtain all regulatory approvals and permits required for the work.
- Perform long-term maintenance of the naturalized stream and assist the County with post flood event remediation of any impacted areas of the park.
- Provide record drawings to the County upon completion of the work.

The County will:

- Provide input throughout the project.
- Provide access to the park for the design and construction of the project and long-term maintenance of the naturalized stream at no cost to the District and USACE.
- Provide any County required permits to the District and USACE at no cost.
- Grant a permanent flood easement to the District.
- Perform long-term maintenance of the park facilities and open space areas.

RESOLUTION

Agreement between the Milwaukee Metropolitan Sewerage District and Milwaukee County for the Kinnickinnic River Reach 3, Project W40007

RESOLVED, by the Milwaukee Metropolitan Sewerage Commission, that the Executive Director is authorized to execute an intergovernmental cooperation agreement between the Milwaukee Metropolitan Sewerage District and Milwaukee County for the Kinnickinnic River Reach 3, Project W40007, in an amount not to exceed \$350,000.



Capital Budget Fiscal Note

Total Project Cost

RELATING TO:

Agreement between the Milwaukee Metropolitan Sewerage District and Milwaukee County for the Kinnickinnic River Reach 3, Project W40007

Capital Project Number(s)

W40007

Impact of Requested Action on Total Project Cost:

☐

Increase

☐

Decrease

☐

New Project

☒

No Change

Total Project Cost Analysis

Adopted 2021 Total Project Cost

Previously Approved Changes

Approved Total Project Cost

Requested Total Project Cost

Requested (Increase)/Decrease

Project Costs

\$14,350,727

\$0

\$14,350,727

n/a

\$0

Action to be taken to Long-Range Financing Plan to address Total Project Cost change

_____ Transfer from Allowance for Cost and Schedule Changes

_____ Transfer from another project (specify in comments)

_____ Delay Project(s) (specify in comments)

_____ Delete Project(s) (specify in comments)

_____ Other _____

_____ Transfer to Allowance for Cost and Schedule Changes

Comments

Budget Review by:

Theresa Zwieg

Date:

2/11/2020

COMMISSION FILE NO: 21-038-3 **DATE INTRODUCED:** March 8, 2021

INTRODUCED BY: Executive Director (Signature on File in the Office of the Commission)

REFERRED BY COMMISSION CHAIRPERSON TO: Policy, Finance, and Personnel Committee

RELATING TO: Declaration of Excess Lands and Authorization to Transfer One Greenseams® Purchased Property and to Place a Greenseams® Conservation Easement over Two Properties Owned by Milwaukee Area Land Conservancy

SUMMARY:

The Commission is requested to declare as excess one parcel of land, known as Ryan Creek Prairie, per Commission Policy 1-11.03, Real Estate Policy, and Administrative Policy 2-11.03, Real Estate Delegation of Authority. The Commission is further requested to authorize the Executive Director to transfer the parcel to the Milwaukee Area Land Conservancy (MALC) as part of the Greenseams® Program, while retaining a conservation easement over the parcel in perpetuity. The District will require MALC to maintain the parcel consistent with those conservation values and place a conservation easement in favor of the District over two additional parcels in its inventory in exchange for the transfer and payment of a one-time maintenance fee.

MALC is a conservation organization, founded by local volunteers, with the purpose of land protection and management. It owns and manages more than 90 acres of land in the City of Franklin.

MMSD staff proposes that the District transfer the Ryan Creek Prairie property identified in Table 1 below to MALC subject to a permanent conservation easement retained by the District. The transfer costs to the District will be an estimated \$2,000 in closing fees and real estate expenses. The declaration of excess land by the Commission is necessary to comply with Wis. Stat. §200.43(4) prior to the District conveying the title for the Ryan Creek Prairies property to MALC.

ATTACHMENTS: **BACKGROUND** ☐ **KEY ISSUES** ☐ **RESOLUTION** ☒
FISCAL NOTE ☒ **S/W/MBE** ☐ **OTHER** ☒ Property Map

PFP_Greenseams_Transfer_MALC_legislative_file.docx
02-15-21

COMMITTEE ACTION: _____ **DATE:** _____

COMMISSION ACTION: _____ **DATE:** _____

SUMMARY (Cont'd)

Declaration of Excess Lands and Authorization to Transfer One Greenseams® Purchased Property and to Place a Greenseams® Conservation Easement over Two Properties Owned by Milwaukee Area Land Conservancy

Table 1

Property	Municipality	Tax Key Number	Acres
Ryan Creek Prairie	Franklin	889-9990	50

The property was purchased in 2008 for \$475,000, with \$253,477 from the Wisconsin Knowles Nelson Stewardship Fund. In 2009, the Greenseams® Program initiated a high quality prairie and wetland restoration project funded by U.S. Fish and Wildlife Service. The proposed transfer is consistent with the District's plans for the long-term management and maintenance of Greenseams® properties. As part of the conservation easement over the Ryan Creek Prairie, MALC will agree to additional prairie seeding, invasive species control, habitat improvements, informative signage, and promotion of the site to the public. To perform these tasks identified in the conservation easement, the District will pay a one-time \$35,000 fee to MALC.

Furthermore, as part of this partnership, MALC will place a Greenseams® conservation easement over two of their properties, Fitzsimmons Woods and Carity Prairie. The closing fees and real estate expenses for the two conservation easement costs to the District will not exceed \$2,000.

Fitzsimmons Woods is an Isolated Natural Resource Area as identified by the Southeastern Wisconsin Regional Planning Commission in Planning Report #42, "A Regional Natural Areas and Critical Species Habitat Protection and Management Plan for Southeastern Wisconsin." The overall site is approximately 43 acres in size with 19 acres under ownership of Milwaukee County. The conservation easement will cover the remaining 24.5 acres to which MALC holds title, thus maintaining a direct link to the portion of woodland owned by the County.

The many wetlands and natural drainageways in Fitzsimmons Woods are headwaters to the Oak Creek and the Root River. The site is a southern mesic beech-maple woodland with a heavy composition of oak species also present. It is host to 145 native Wisconsin plant species as well as 13 ephemeral wetlands (vernal pools).

MALC partnered with the previous property owner, Bill Carity, to preserve a rare prairie remnant and restore a sedge meadow complex. The 23-acre site is open to the public and is one of the last known examples of virgin (unplowed) prairie in the highly populated Milwaukee County.

RESOLUTION

Declaration of Excess Lands and Authorization to Transfer One Greenseams® Purchased Property and to Place a Greenseams® Conservation Easement over Two Properties Owned by Milwaukee Area Land Conservancy

RESOLVED, by the Milwaukee Metropolitan Sewerage Commission, that the Executive Director is authorized, as part of the Greenseams® Program, to transfer one property to the Milwaukee Area Land Conservancy, as identified in Table 1 below, while retaining a conservation easement over the parcel for the benefit of the District to protect the conservation values of the parcel in perpetuity and to require the partner organization to maintain the parcel in perpetuity consistent with those conservation values.

Table 1

Property	Municipality	Tax Key Number	Acres
Ryan Creek Prairie	Franklin	889-9990	50

FURTHER RESOLVED, by the Milwaukee Metropolitan Sewerage Commission, that, pursuant to Sec. 200.43(4), Wis. Stats., the District declares as excess any and all property interest greater than the permanent conservation easement to be retained by the District for each of the tax key parcels identified in Table 1 above.

FURTHER RESOLVED, by the Milwaukee Metropolitan Sewerage Commission, that the Executive Director may accept and execute on behalf of the Commission all related conservation easements, deeds of conveyance, or other related real estate documents for an amount not to exceed \$2,000 and make a \$35,000 payment to Milwaukee Area Land Conservancy for long-term ecological management and maintenance activities for Ryan Creek Prairie.

FURTHER RESOLVED, by the Milwaukee Metropolitan Sewerage Commission, that the Executive Director is authorized to place a Greenseams® conservation easement over each of two properties owned by Milwaukee Area Land Conservancy, known as Fitzsimmons Woods (24.5 acres) and Carity Prairie (23 acres), located in the city of Franklin, for an amount not to exceed \$2,000 for closing fees and real estate expenses.



Capital Budget Fiscal Note Total Project Cost

RELATING TO:

Declaration of Excess Lands and Authorization to Transfer One Greenseams® Purchased Property and to Place a Greenseams® Conservation Easement over Two Properties Owned by Milwaukee Area Land Conservancy

Capital Project Number(s)

W97004

Impact of Requested Action on Total Project Cost:

☐ Increase ☐ Decrease ☐ New Project ☒ No Change

Total Project Cost Analysis

Project Costs

Adopted 2021 Total Project Cost

*

Previously Approved Changes

\$0

Approved Total Project Cost

*

Requested Total Project Cost

n/a

Requested (Increase)/Decrease

\$0

Action to be taken to Long-Range Financing Plan to address Total Project Cost change

_____ Transfer from Allowance for Cost and Schedule Changes

_____ Transfer from another project (specify in comments)

_____ Delay Project(s) (specify in comments)

_____ Delete Project(s) (specify in comments)

_____ Other _____

_____ Transfer to Allowance for Cost and Schedule Changes

Comments

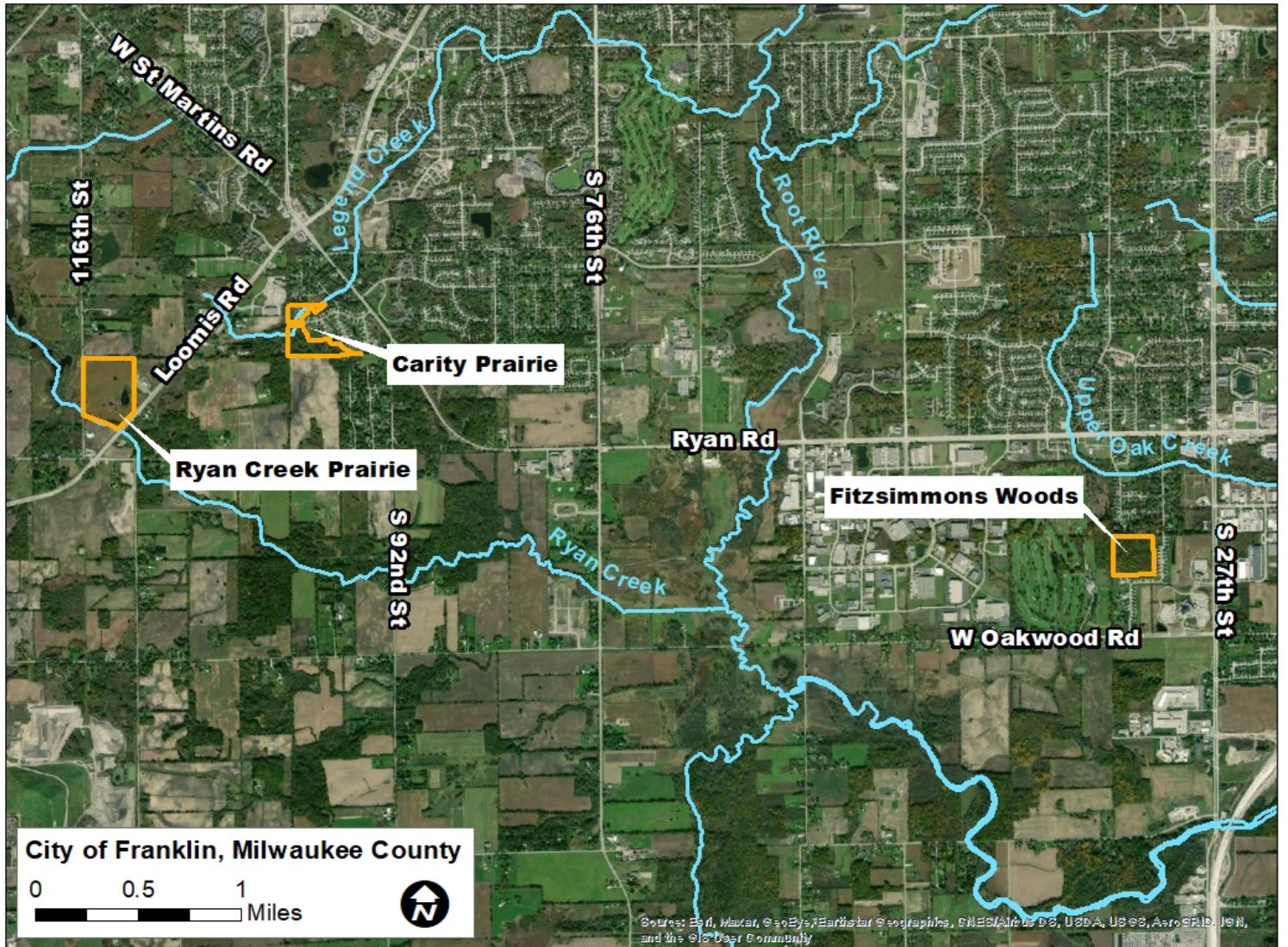
*The Greenseams® program does not have a total project cost because it is a capital program. The 2021 Capital Budget includes \$1.2 million for 2021, and the long-range financing plan includes \$7.2 million. The adopted 2021 Capital Budget and the long-range financing plan have sufficient funding for the current request of \$39,000.

Budget Review by:

Christine Durkin

Date:

2/3/2021



COMMISSION FILE NO: 21-039-3 **DATE INTRODUCED:** March 8, 2021

INTRODUCED BY: Executive Director (Signature on File in the Office of the Commission)

REFERRED BY COMMISSION CHAIRPERSON TO: Policy, Finance, and Personnel Committee

RELATING TO: Award of Contract G98002P10, Bioretention Basins and Turf Naturalization

SUMMARY:

The Commission is requested to authorize the Executive Director to execute on behalf of the District Contract G98002P10, Bioretention Basins and Turf Naturalization, with C.W. Purpero, Inc., in the amount of \$319,977. C.W. Purpero, Inc., was the lowest responsible, responsive bidder among three bids received.

The Stormwater Management Plan (September 2004) for MMSD headquarters at 260 West Seeboth Street required recertification by the City of Milwaukee in 2020. After a stormwater management plan is approved by the City, a written recertification must be prepared by a professional engineer and submitted every five years. As part of this process, the headquarters site was evaluated to determine if additional green infrastructure (GI) projects could be used to demonstrate GI site retrofits that can be used to achieve compliance with MMSD Chapter 13 and other local stormwater regulations.

Through this process, it was determined that additional GI retrofits at the MMSD headquarters site are possible. By incorporating them into the landscape, MMSD partners will have high quality examples of GI while MMSD will further demonstrate commitment to the 2035 Vision.

ATTACHMENTS: **BACKGROUND** ☐ **KEY ISSUES** ☐ **RESOLUTION** ☒
FISCAL NOTE ☒ **S/W/MBE** ☒ **OTHER** ☐

OP_G98002P10_Bioretention_Basins_&_Turf_Naturalization_legislative_file.docx
02-17-21

COMMITTEE ACTION: _____ **DATE:** _____

COMMISSION ACTION: _____ **DATE:** _____

SUMMARY (Cont'd)

Award of Contract G98002P10, Bioretention Basins and Turf Naturalization

There are two types of GI retrofits in this project: bioretention basins and native prairie landscaping. The installation of two bioretention basins on the south end of the headquarters property on the south and east end of the existing wetland can capture additional runoff from the headquarters driveways. These driveways will be repaved as a separate project in the summer of 2021. Adding two new bioretention basins near the existing wetland demonstrates an ability to install bioretention basins on a site with high groundwater using a modified, relatively shallow cross section with a backflow valve. It also demonstrates the ability to retrofit an urbanized site with GI.

The second part of the project is to convert the headquarters site's turf lawn to a native prairie. A native prairie has many benefits over turf that align with District initiatives such as enhanced urban biodiversity, higher infiltration capacity, and a demonstration to partners that a native prairie can be aesthetically pleasing when maintained properly. Trees will also be removed as part of this project to ensure the prairie and bioretention basins can establish themselves and function properly. The majority of the trees to be removed are non-native trees and diseased ash trees. Trees will be planted on site to balance the loss of non-native and diseased trees. The trees that will be planted include native varieties, such as Red Sunset Red Maple, Green Mountain Sugar Maple, Heritage River Birch, Prairie Pride Hackberry, Black Gum, Swamp White Oak, Bur Oak, Red Oak, American Basswood, Allegheny Serviceberry, Cockspur Hawthorn, and Common Witch Hazel.

A third part of the project was an alternate bid item to modify an existing diversion structure that is part of the existing vortex separator. The vortex separator appears on the surface as a large manhole in the northwest median of the parking lot. Due to high river levels, this structure has had diminished function for an extended period of time. To return the structure's function, weir plates will be replaced within the diversion structure, which is upstream of the vortex separator. These new weir plates will hold back the higher river levels, allowing for the vortex separator to operate even during high water levels. The weir plates can be adjusted in the future as water levels fluctuate.

The duration for G98002P10 is 126 days with a two-year warranty and vegetation establishment period that starts upon substantial project completion.

The low bid received by the District is lower than budgeted.

RESOLUTION

Award of Contract G98002P10, Bioretention Basins and Turf Naturalization

RESOLVED, by the Milwaukee Metropolitan Sewerage Commission, that the Executive Director is authorized to execute on behalf of the District Contract G98002P10, Bioretention Basins and Turf Naturalization, with C.W. Purpero, Inc., in the amount of \$319,977.



Capital Budget Fiscal Note

Total Project Cost

RELATING TO:

Award of Contract G98002P10, Bioretention Basins and Turf Naturalization

Capital Project Number(s)

G98002

Impact of Requested Action on Total Project Cost:

☐

Increase

☐

Decrease

☐

New Project

☒

No Change

Total Project Cost Analysis

Adopted 2021 Total Project Cost

Previously Approved Changes

Approved Total Project Cost

Requested Total Project Cost

Requested (Increase)/Decrease

Project Costs

\$3,240,578

\$0

\$3,240,578

n/a

\$0

Action to be taken to Long-Range Financing Plan to address Total Project Cost change

_____ Transfer from Allowance for Cost and Schedule Changes

_____ Transfer from another project (specify in comments)

_____ Delay Project(s) (specify in comments)

_____ Delete Project(s) (specify in comments)

_____ Other _____

_____ Transfer to Allowance for Cost and Schedule Changes

Comments

There is sufficient funding the request of \$319,997.

Budget Review by:

Christine Durkin

Date:

2/11/2021

Award of Contract G98002P10, Bioretention Basins and Turf Naturalization**Procurement & S/W/MBE Summary Information****Contract #** G98002P10**Cost Center:** PRS**Bioretention Basins and Turf Naturalization****BID SUMMARY**Bid Opening Date: 1/20/2021

	Total	SWMBE	Local
# of Bids	3	0	2
# of Responsive Bids	3	0	2

Bidders	Price	Responsive?	Responsible?	% Sub	% SWMBE
C.W. Purpero, Inc. Oak Creek, WI 53154	\$319,977.00	Responsive	Responsible	36.3%	26.9%
Poblocki Paving Corp. West Allis, WI 53214	\$447,167.00	Responsive	Responsible	Not provided	Not provided
LaLonde Contractors, Inc. Waukesha, WI 53186	\$462,764.38	Responsive	Responsible	Not provided	Not provided

SUBCONTRACTOR INFORMATION

Type	Subcontractor Name	Type of Work	%	Amount
MBE	UPI, LLC New Berlin, WI 53146	Site utilities	10.3%	\$33,111.00
SBE	Natural Landscapes, Inc. Hartland, WI 53029	Landscaping, seeding	16.6%	\$53,038.00
Non-SWMBE	Stark Pavement Corp. Brookfield, WI 53005	Concrete/asphalt paving	7.2%	\$23,000.00
Non-SWMBE	ACME Systems, Inc. Glendale, WI 53209	Irrigation	1.0%	\$3,200.00
Non-SWMBE	T&T Tree Service Burlington, WI 53105	Tree clearing	1.2%	\$3,960.00

ECONOMIC DEVELOPMENT ELEMENTS

Workforce Requirements

Sanitary Sewer Service Area (SSSA)

Employment: 45%

Target Area (TA) Employment: 20%

Apprentices Required: NA

OUTREACH INFORMATION

The Procurement team performed the following outreach: advertised in the Daily Reporter, sent an e-mail notification to all registered firms in the General Services and Landscaping category, sent targeted e-mails to prequalified landscaping firms. The proposal opportunity is also publicly accessible from the MMSD website and Bonfire, the portal used to post RFPs. Bonfire also performs outreach to its users when an RFP is posted.

S/W/MBE Planholders:

Masterwork Construction LLC

Rams Contracting, Ltd

K. Singh & Associates, Inc.

Dakota Intertek Corp

Marek Landscaping, LLC

Property Solutions Contracting LLC

Mid City Corporation

Platt Construction, Inc.

If no or low S/W/MBE participation, explain why:

NA

Additional Comments:

NA

AWARDEE INFORMATION

Company: C.W. Purpero, Inc.

Contact Person: Todd Schmidt

Phone Number: 414-856-2850

E-mail Address: schmidt@purpero.com

EEO DATA

1190 West Rawson Avenue,
Location: Oak Creek, WI 53154

Total # of Employees 64

	<u>Total</u>	<u>%</u>		<u>Total</u>	<u>%</u>
Minorities	<u>4</u>	<u>6.3%</u>	Females	<u>7</u>	<u>10.9%</u>
Asian	<u>0</u>	<u>0.0%</u>	Asian	<u>0</u>	<u>0.0%</u>
Black or African American	<u>1</u>	<u>1.6%</u>	Black or African American	<u>0</u>	<u>0.0%</u>
Hispanic or Latino	<u>3</u>	<u>4.7%</u>	Hispanic or Latino	<u>1</u>	<u>1.6%</u>
Native American	<u>0</u>	<u>0.0%</u>	Native American	<u>0</u>	<u>0.0%</u>
Other Minority	<u>0</u>	<u>0.0%</u>	Other Minority	<u>0</u>	<u>0.0%</u>

Labor Market Availability - Minorities 22.0%

Labor Market Availability - Females 49.0%

COMMISSION FILE NO: 21-040-3 **DATE INTRODUCED:** March 8, 2021

INTRODUCED BY: Executive Director (Signature on File in the Office of the Commission)

REFERRED BY COMMISSION CHAIRPERSON TO: Policy, Finance, and Personnel Committee

RELATING TO: Authorizing the Executive Director to Submit the Water Infrastructure Finance and Innovation Act of 2014 Application and Associated Fee

SUMMARY:

The Commission is requested to authorize the Executive Director to submit an application for a Water Infrastructure Finance and Innovation Act (WIFIA) of 2014 loan and the associated fee of \$100,000.

The WIFIA of 2014 established the WIFIA loan program, a federal credit program administered by the Environmental Protection Agency for eligible water and wastewater infrastructure projects. The WIFIA loan program accelerates investment in the nation's water infrastructure by providing long-term, low cost supplemental loans for regionally and nationally significant projects. A WIFIA loan provides several benefits, including that:

- A single fixed interest rate is established at closing.
- The interest rate is equal to the U.S. Treasury rate of a similar maturity.
- The interest rate is not impacted by the borrower's credit or loan structure.
- The repayment schedule can be customized to anticipated revenues and expenses for the life of the loan.
- The repayment period can be customized up to 35 years after substantial completion.
- Payments may be deferred up to 5 years.

In October 2020, the District submitted a letter of interest to express interest and be considered for the 2021 WIFIA loan process. In January 2021, the District was notified that it was invited to submit an application.

ATTACHMENTS: **BACKGROUND** ☐ **KEY ISSUES** ☐ **RESOLUTION** ☒
FISCAL NOTE ☒ **S/W/MBE** ☐ **OTHER** ☐ _____

PFP_WIFIA_Application_legislative_file.docx
02-15-21

COMMITTEE ACTION: _____ **DATE:** _____

COMMISSION ACTION: _____ **DATE:** _____

SUMMARY (Cont'd)

Authorizing the Executive Director to Submit the Water Infrastructure Finance and Innovation Act of 2014 Application and Associated Fee

The District has identified two capital existing projects and one potential new project that meet the application criteria. The projects to be included in the application are:

1. 30th Street Corridor, West Basin Flood Management Project: \$36.5 million
2. Wilson Park, primarily Reaches 3 and 4: \$39.2 million
3. Dredge Materials Management Facility: \$100 million

The WIFIA loan requires the District to finance 51% of the cost of projects, for which staff anticipates issuing general obligation bonds, consistent with the 2021 Long Range Financing Plan. The interest rates used in WIFIA financing are fixed and match the U.S. Treasury rate of similar maturity. Given current rates, the District could save \$20 million by utilizing WIFIA rather than financing 100% through a general obligation bond.

RESOLUTION

Authorizing the Executive Director to Submit the Water Infrastructure Finance and Innovation Act of 2014 Application and Associated Fee

RESOLVED, by the Milwaukee Metropolitan Sewerage Commission, that the Executive Director is authorized to submit an application to the Water Infrastructure Finance and Innovation Act Program to finance project expenditures and the application fee in the amount of \$100,000.



Capital Budget Fiscal Note

Total Project Cost

RELATING TO:

Authorizing the Executive Director to Submit the Water Infrastructure Finance and Innovation Act of 2014 Application and Associated Fee

Capital Project Number(s)

M07002

Impact of Requested Action on Total Project Cost:

☐ Increase ☐ Decrease ☐ New Project ☒ No Change

Total Project Cost Analysis

Adopted 2021 Total Project Cost
Previously Approved Changes
Approved Total Project Cost
Requested Total Project Cost
Requested (Increase)/Decrease

Project Costs

\$2,588,691
\$0
\$2,588,691
n/a
\$0

Action to be taken to Long-Range Financing Plan to address Total Project Cost change

_____ Transfer from Allowance for Cost and Schedule Changes
_____ Transfer from another project (specify in comments)
_____ Delay Project(s) (specify in comments)
_____ Delete Project(s) (specify in comments)
_____ Other _____
_____ Transfer to Allowance for Cost and Schedule Changes

Comments

Budget Review by:

Christine Durkin

Date:

2/9/2021

POLICY, FINANCE & PERSONNEL COMMITTEE MEETING

March 8, 2021

EXECUTIVE DIRECTOR'S REPORT

21-002-01

A. Monthly Reports

March 2021

Sun	Mon	Tue	Wed	Thu	Fri	Sat
	<i>1</i>	<i>2</i>	<i>3</i>	<i>4</i>	<i>5</i>	<i>6</i>
<i>7</i>	8 Operations Committee-9:00 a.m. PF&P Committee- 9:05 a.m.	<i>9</i>	<i>10</i>	<i>11</i>	<i>12</i>	<i>13</i>
<i>14</i>	<i>15</i>	<i>16</i>	17 ST. PATRICK'S DAY	<i>18</i>	<i>19</i>	<i>20</i>
<i>21</i>	22 Commission-9:00 a.m.	<i>23</i>	<i>24</i>	<i>25</i>	<i>26</i>	<i>27</i>
<i>28</i>	<i>29</i>	<i>30</i>	<i>31</i>			