

MMSD MicroStation Workspace Installation 03/18/2013

This workspace is intended to facilitate compliance with Milwaukee Metropolitan Sewerage District CAD Standards. The following steps will support the workspace and will provide an introduction to how MicroStation and the MMSD Workspace (MMSD_MSW) will support your MMSD CAD activities.

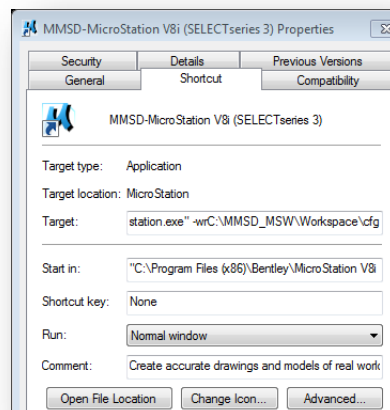
There are two ways to install the MMSD Standard Workspace

- Install the workspace on each end user's computer
- Install on an organization's server. (Installing the Workspace on an organization's server will require a few more steps which can be found on page 2 of this document.)

Installing Workspace on Desktop:

Download and unzip the MMSD_MSW folder to your end user's C:drive. The configuration file is defaulted to work off the C: drive of the end user's computer.

1. With the workspace on the local desktop drive, create a copy of the MicroStation desktop icon and open the properties of that icon.
2. In the target line of the properties you will need to copy and paste the following text at the end of the target info (`-wrC:\MMSD_MSW\Workspace\cfg`) as shown in Graphic 1.
 - *Make sure you include the space between the `.exe`" and `-wr` otherwise the variable will not work.*
3. The default standards for MicroStation will now redirect to the MMSD Standard Workspace whenever you open MicroStation with this icon.



Graphic 1



Installing Workspace on Server:

To install the Workspace on your organization's server you will need to download and unzip the MMSD_MSW folder to the location of your server share folder. The configuration files will need to be modified to work off the server. The configuration files are located in the /"cfg" folder within the Workspace folder.

1. Within the /Workspace/cfg folder you will find two configuration files.
 - /"userdata"
 - /"global"
2. Graphic 2 illustrates two MMSDROOT variable setup versions.
 - a. Setup works off the local desktop drive
 - b. Setup works off the server
3. Change the server variable to default the MMSDROOT connection.
 - Comment out the C:/ drive by placing a pound sign (#) next to it and deleting the # next to the server variable.
4. Type in the name of the server share folder in the space provided.
 - **Double check that this is modified in both configuration files (i.e., /userdata; /global).**

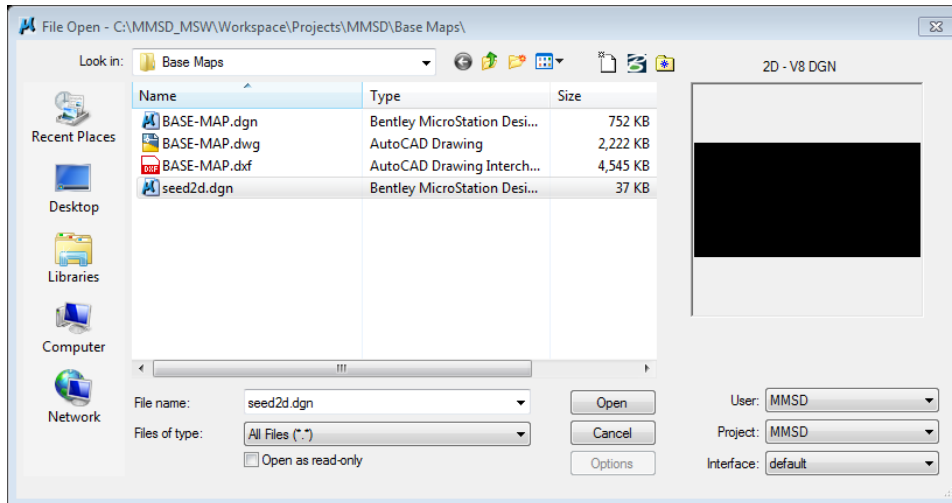
```
USERDATA          = $(MMSDROOT) CFG/USERS/  
CFG               = $(MMSDROOT) CFG/*. *;C:/MMSD_MSW/*.CFG  
MMSDROOT          = C:/MMSD_MSW/WORKSPACE/  
#MMSDROOT        = //SERVER/NAME OF SHARE FOLDER/MMSD_MSW/WORKSPACE/
```

Graphic 2

5. Copy the desktop icon for MicroStation and enter the properties for that icon. Modify the workspace root from the default settings to MMSD standard settings.
6. In the icon properties dialog window, open the Shortcut tab and modify the text for the Target. Copy/paste the location of your organization's shared folder as shown in Graphic 1.
(**-wr\\SERVER\NAME OF SHARE FOLDER\MMSD_MSW\Workspace\cfg**)
 - *Make sure to include the space between the .exe" and -wr otherwise the variable will not work.*



Graphic 3 displays what the open menu now looks like when using the modified MMSD MicroStation desktop shortcut.



Graphic 3

If you have any questions please contact Robert Chavez, CAD Coordinator
414.225.2230 or RCHAVEZ@MMSD.COM.