

MILWAUKEE RIVER WATERSHED CONSERVATION PARTNERSHIP



Healthy Soils. Clean Water. Smart Business.

The Milwaukee River, a major tributary to Lake Michigan, faces degraded water quality, due in part to high levels of phosphorous, sediment, and bacteria from stormwater runoff. You can make a difference to improve water quality in the area.

The Milwaukee River Watershed Conservation Partnership (MRWCP) has received \$7 million in conservation incentives available to area landowners to support agricultural conservation easements and conservation practices throughout river corridors. The incentive funding was made available through the USDA Natural Resources Conservation Service (NRCS) Regional Conservation Partnership Program (RCP). By investing in no-till farming, grassed waterways, cover crops, vegetated buffers and nutrient management plans, participants can build soils that hold nutrients for their crops, retain rainwater during dry weather, prevent silts from leaving fields and keep nutrients from entering waterways. Partners seek to demonstrate that healthy soils can be cost effective for production and beneficial to area waterways.



Natural Resources Conservation Service

April, 2021





ABOUT US

The MRWCP is a coalition of agricultural producers, agribusinesses, state and local government, and land trusts coordinated by the Milwaukee Metropolitan Sewerage District (MMSD) and NRCS. The initiative is aimed at encouraging information sharing and collaboratively investing in agricultural conservation. MRWCP participants agree that healthy soils can help mitigate future flooding, improve water quality, and is good for business. MRWCP partners will:

Work with landowners to evaluate benefits of agricultural conservation practices

With support from the NRCS Environmental Quality Incentive Program (EQIP), MRWCP will engage agri-business and landowners in demonstration workshops, agricultural innovation field days, and practice installation. Implemented conservation practices are eligible to receive a financial incentive through the Land Management program. Grass-based conservation practices are eligible for an additional three years of incentive payments following installation through the Land Rental program.

Preserve farmland through conservation easements

The MRWCP will help landowners acquire easements on priority agricultural lands through the NRCS Agricultural Conservation Easements Program (ACEP) and develop conservation plans that prioritize nutrient management and EQIP practices.

Facilitate producer-led watershed protection groups to promote conservation

The MRWCP encourages producer-led groups in Fond du Lac, Ozaukee, Sheboygan, and Washington counties to promote information sharing on conservation practices and their impacts on soil and water conditions in the Milwaukee River Watershed.

PROJECT GOALS

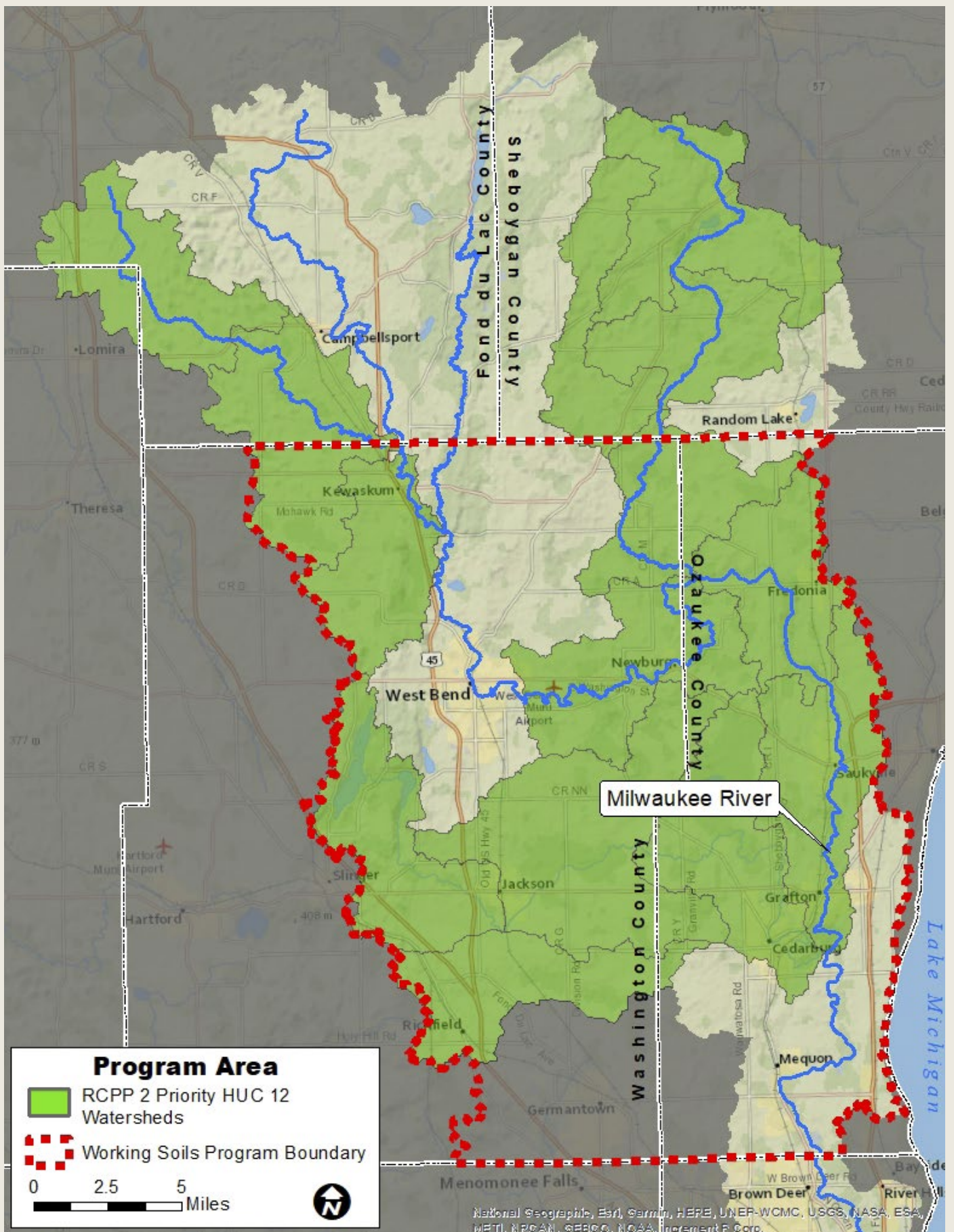
Evaluate performance of conservation practices on soil health; measure the impact practices have on agricultural production through facilitated outreach and practice demonstrations led by area producers.

Assist the agricultural community to improve soil health for increased production. The MRWCP aims to promote agricultural conservation practices along priority streams and rivers using NRCS' EQIP programs.

Support a vibrant farm economy by permanently protecting local farmland to ensure it remains available for production in the future. The MRWCP aims to protect 1,500 acres of farmland through the NRCS Agricultural Conservation Easement Program (ACEP).



MRWCP Project Boundary and Focus Areas



PARTICIPATING ORGANIZATIONS OF THE MILWAUKEE RIVER WATERSHED CONSERVATION PARTNERSHIP

CONTACT US

Environmental Quality Incentive Program (EQIP):

Natural Resources Conservation Service

Michael Patin
262-335-4860 Ext. 2359
333 East Washington Street, Suite 3200
West Bend, WI 53095

Cory Drummond
920-266-4661
W6529 Forest Avenue
Fond du Lac, WI 54937

Fond du Lac County Land & Water Department

Paul Tollard
920-906-4672
W6529 Forest Ave.
Fond du Lac, WI 54937

Ozaukee County Land and Water Management Department

Andy Holschbach/Jeff Bell
262-284-8313
121 W. Main Street, P.O. Box 994
Port Washington, WI 53074

Sheboygan County Planning & Conservation Department

Aaron Brault
920-459-3060
508 New York Avenue
Sheboygan, WI 53081

Washington County Land and Water Conservation Division

Paul Sebo
262-335-4800
333 East Washington Street, Suite 2300
West Bend, WI 53095

Farmland Preservation:

The Conservation Fund

David Grusznski
414-225-2124
260 West Seeboth Street
Milwaukee, WI 53024

Cedar Lakes Conservation Foundation

Linda Mutschler
262-353-4866
P.O. Box 347
West Bend, WI 53095

Ozaukee Washington Land Trust

Steve Henkel
262-338-1794
200 Wisconsin Street
West Bend, WI 53095

Producer-Led Watershed Groups:

Milwaukee River Watershed Clean Farm Families

www.cleanfarmfamilies.com

Cedar Creek Farmers

Al Schmidt
262-483-0683

Milwaukee River Watershed Conservation Partnership:

Milwaukee Metropolitan Sewerage District

Kristin Schultheis
414-225-2276
260 West Seeboth Street
Milwaukee, WI 53024