

ELECTRONIC PACKET

February 8, 2021 POLICY, FINANCE, & PERSONNEL COMMITTEE MEETING

RELEASED: Wednesday, February 3, 2021



Milwaukee Metropolitan Sewerage District

260 West Seeboth
Street
Milwaukee, WI
53204

Meeting Agenda

Policy, Finance & Personnel Committee

Jeff Stone, Chair

Corey Zetts, Vice Chair

Tim Carpenter, Chantla Lewis, Eugene Manzanet

Dan Devline, Ex-Officio

Monday, February 8, 2021

9:05 AM

Teams Online Meeting/Conference Call

NOTICE IS HEREBY GIVEN, pursuant to Section 19.84, Wisconsin Statutes, that the Milwaukee Metropolitan Sewerage District's Policy, Finance and Personnel Committee will hold its regularly scheduled public meeting on Monday, February 8, 2021, at 9:05 a.m. or immediately following the Operations Committee meeting which begins at 9:00 a.m. via Teams online meeting. The weblink to access this meeting is <https://tinyurl.com/y4ng93cy>; telephone dial-in is available through 414.909.9127, access code 681 148 485#.

PURSUANT TO SECTION 19.85(1)(g), Wisconsin Statutes, the Committee reserves the right to go into Closed Session on any item on the public portion of the agenda to confer with Legal Counsel when it appears the matter may involve the District in litigation. If the Committee does convene in such a Closed Session, it is contemplated that the Committee will again, before adjourning the meeting, reconvene at the same place in Open Session at which time the Committee may act upon any item(s) considered in the Closed Session and upon any unfinished items from the regular agenda.

CALL TO ORDER

RECORD ROLL

Approval of Proceedings of Regular Committee Meeting held January 11, 2021

NEW BUSINESS

- | | | |
|----|----------|--|
| 9 | 21-021-2 | Agreement between the Milwaukee Metropolitan Sewerage District and the City of Milwaukee Regarding the Western Milwaukee Phase 2B Project W20028 |
| 10 | 21-022-2 | Authorizing the Executive Director to Continue a Self-insured Workers' Compensation Program |
| 11 | 21-023-2 | Declaration of the Public Necessity and Approval of the Acquisition Plat (Relocation Order) for the Project C05051, Edgewood Avenue Near Surface Collector Extension Project |
| 12 | 21-024-2 | Approval of Job Content Value and Job Title |

Only Requires Policy, Finance, and Personnel Committee Approval

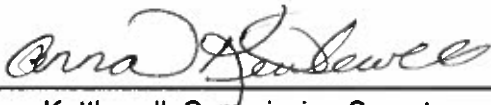
ORGANIZATION & ADMINISTRATION

21-002-1 EXECUTIVE DIRECTOR'S REPORT

A. Monthly Reports

ADJOURNMENT

PLEASE NOTE: Upon reasonable notice, efforts will be made to accommodate the needs of disabled individuals through sign language interpreters or other auxiliary aids. For additional information or to request these services, contact the Office of the Commission at 414.225.2264, (FAX) 414.272.6360 or write to Office of the Commission, 260 W. Seeboth Street, Milwaukee, Wisconsin, 53204-1446.



Anna Kettlewell, Commission Secretary
Milwaukee Metropolitan Sewerage District



Milwaukee Metropolitan Sewerage District

260 West
Seeboth Street
Milwaukee, WI
53204

Meeting Minutes Policy, Finance & Personnel Committee

Jeff Stone, Chair
Corey Zetts, Vice Chair
Tim Carpenter, Chantia Lewis, Eugene Manzanet
Dan Devine, Ex-Officio

Monday, January 11, 2021

9:05 AM

Teams Online Meeting/Conference Call

CALL TO ORDER

Committee Chair Commissioner Stone called the meeting to order at 9:36 a.m.

RECORD ROLL

Present 6 - Tim Carpenter, Chantia Lewis, Eugene Manzanet, Jeff Stone, Corey Zetts,
and Dan Devine

*Other Commissioners Present: Dan Bukiewicz, LaTonya Johnson, Bryan L. Kennedy, Ph.D., Kris Martinsek, and
John Swan, III.*

Approval of Proceedings of Regular Committee Meeting held December 7, 2020

A motion was made by Commissioner Manzanet, seconded by Commissioner
Zetts. The motion carried by the following roll call vote:

Yes: 6 - Commissioner Carpenter, Commissioner Lewis, Commissioner Manzanet,
Commissioner Stone, Commissioner Zetts and Commissioner Devine

No: 0

NEW BUSINESS

Items 6-7 were taken as a block.

6 21-010-1 Award of Contract M04003P01, Fresh Coast Fresh Start, and Approve Changes in Total Project Cost

The Committee received a PowerPoint presentation from Karen Sands, Director of Planning, Research, and Sustainability.

Commissioner Stone asked how many people can participate in this program, what the wage rate would be for participants, and for a description of the career ladders that would be developed through the program.

Commissioner Zetts asked if the contractor would work with the institutions/companies at which the participants will be placed on ensuring that the employers are inclusive.

Commissioner Manzanet questioned what portion of the total program budget comes from MMSD versus the partners.

Commissioner Lewis asked how participants are selected, how the program will be marketed, what the target age of the program is, and whether it was open to Milwaukee residents only or to other counties as well. She also questioned if transportation assistance will be provided to the participants and what support is provided to successful participants.

A motion was made by Commissioner Manzanet, seconded by Commissioner Zetts, that this matter be approved by a roll call vote. The motion carried by the following roll call vote:

Yes: 6 - Commissioner Carpenter, Commissioner Lewis, Commissioner Manzanet, Commissioner Stone, Commissioner Zetts and Commissioner Devine

No: 0

7 21-011-1 Initial Resolution Authorizing the Sale and Issuance of Not to Exceed \$46,000,000 General Obligation Bonds and/or General Obligation Promissory Notes, and Certain Related Details

The Committee received a presentation from Mickie Pearsall, Director of Finance and Human Resources.

A motion was made by Commissioner Manzanet, seconded by Commissioner Zetts, that this matter be approved by a roll call vote. The motion carried by the following roll call vote:

Yes: 6 - Commissioner Carpenter, Commissioner Lewis, Commissioner Manzanet, Commissioner Stone, Commissioner Zetts and Commissioner Devine

No: 0

ORGANIZATION & ADMINISTRATION

21-002-1

EXECUTIVE DIRECTOR'S REPORT

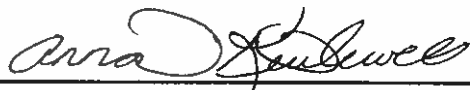
A. Monthly Reports

A. No report.

ADJOURNMENT

It was moved by Commissioner Carpenter, seconded by Commissioner Manzanet, to adjourn. The motion carried.

As there was no further business, the meeting was adjourned at 9:59 a.m.



Anna Kettlewell, Commission Secretary
Milwaukee Metropolitan Sewerage District

COMMISSION FILE NO: 21-021-2 **DATE INTRODUCED:** February 8, 2021

INTRODUCED BY: Executive Director (Signature on File in the Office of the Commission)

REFERRED BY COMMISSION CHAIRPERSON TO: Policy, Finance, and Personnel Committee

RELATING TO: Agreement between the Milwaukee Metropolitan Sewerage District and the City of Milwaukee Regarding the Western Milwaukee Phase 2B Project W20028

SUMMARY:

The Commission is requested to authorize the Executive Director to execute an intergovernmental cooperation agreement (ICA) between the Milwaukee Metropolitan Sewerage District (District) and the City of Milwaukee (City) regarding the Western Milwaukee Phase 2B Project W20028, with project related costs to be paid to the City estimated at \$215,000.

The Western Milwaukee Project is part of the overall Menomonee River Phase II Watercourse Management Plan (Plan). The Plan includes flood management with integrated watercourse restoration. It reduces the flood risk of 319 structures and simultaneously provides aquatic and riparian habitat restoration.

The Western Milwaukee Project focuses on the Menomonee River between Hart Park and U.S. Highway 175 and is in the Cities of Milwaukee and Wauwatosa. The project consists of design and construction of a levee/floodwall system, lowering the floodplain between the river and the Canadian Pacific Railroad tracks, and modifying the interior drainage system. There are three phases to the Western Milwaukee Project: Phases 1, 2A, and 2B. The District has constructed Phases 1 and 2A. The entire system will be designed such that it meets Federal Emergency Management Agency (FEMA) and Wisconsin Department of Natural Resources floodplain regulations. This will ultimately reduce flood risk to the 319 structures, and they will no longer be in the regulatory floodplain.

As the project affects both the Cities of Milwaukee and Wauwatosa, it has been necessary to define the roles of the District and each municipality. As such, the District is negotiating two separate ICA's, one with each municipality. The District and the City of Milwaukee have completed negotiations for the respective ICA.

ATTACHMENTS: **BACKGROUND** ☐ **KEY ISSUES** ☐ **RESOLUTION** ☒

FISCAL NOTE ☒ **S/W/MBE** ☐ **OTHER** ☐ _____

PFP_ICA_MKE_Western_Milw_2B_legislative_file.docx
01-13-21

COMMITTEE ACTION: _____ **DATE:** _____

COMMISSION ACTION: _____ **DATE:** _____

SUMMARY (Cont'd)

Agreement between the Milwaukee Metropolitan Sewerage District and the City of Milwaukee Regarding the Western Milwaukee Phase 2B Project W20028

Major elements of the Western Milwaukee Phase 2B Project addressed under this agreement include:

- New levee and floodwall
- Three new storm sewer systems
- City sanitary sewer replacements or rehabilitation
- New and modified City waterlines
- City street lighting and underground conduit relocations
- City street reconstruction
- FEMA regulatory requirements
- Miscellaneous items

The following summarizes City and District responsibilities for each of these project elements.

Under the ICA, the District will:

- Fund, contract for, and manage the design and construction of facilities listed above (except when noted below).
- Provide the City with appropriate property rights and access for their utilities.
- Develop and implement a "Levee Management Area" (LMA), which will ensure the District can manage construction activities by the City on and adjacent to the levee.
- Inspect and assess levee related assets in the LMA consistent with levee management best practices. This includes additional limited inspection due to City owned storm sewers being located within the LMA.
- Share long-term repair costs of City storm sewer assets constructed in this project and in the LMA, when repairs are necessary to maintain levee accreditation.
- Add City requested sanitary sewer construction to District bid packages and invoice the City for construction costs.
- Cooperate and coordinate with the City on watermain pipe condition assessments in the LMA.
- Compensate the City in an amount estimated at \$215,000 for project related costs.
- Provide the City opportunities to review design documents and provide record drawings upon completion.
- Develop and submit FEMA permitting materials.

SUMMARY (Cont'd)

Agreement between the Milwaukee Metropolitan Sewerage District and the City of Milwaukee Regarding the Western Milwaukee Phase 2B Project W20028

The City will:

- Work collaboratively with the District on levee protection requirements within the LMA.
- Provide the District with appropriate property rights and access.
- Accept ownership of two of the four new storm sewer systems, and a portion of one of the new storm systems, and agree to properly operate, inspect, and maintain these systems.
- Accept ownership of new and replacement City utilities that are necessary due to the levee.
- Provide the District with the design of the City's requested sanitary sewer construction to be added to District bid packages and compensate the District for those related construction costs.
- Share long-term repair costs of City storm sewer assets in the LMA built under the Phase 2B construction contract, when repairs are necessary to maintain levee accreditation.
- Provide and conduct watermain pipe condition assessments.

Costs for fees and related project costs that the District will pay to the City are estimated at \$215,000. The actual amount will be reconciled as actual costs are incurred.

RESOLUTION

Agreement between the Milwaukee Metropolitan Sewerage District and the City of Milwaukee Regarding the Western Milwaukee Phase 2B Project W20028

RESOLVED, by the Milwaukee Metropolitan Sewerage Commission, that the Executive Director is authorized to execute an intergovernmental cooperation agreement between the Milwaukee Metropolitan Sewerage District and the City of Milwaukee regarding the Western Milwaukee Phase 2B Project W20028 with project related costs to be paid to the City estimated at \$215,000.



Capital Budget Fiscal Note

Total Project Cost

RELATING TO:

Agreement between the Milwaukee Metropolitan Sewerage District and the City of Milwaukee Regarding the Western Milwaukee Phase 2B Project W20028

Capital Project Number(s)

W20028

Impact of Requested Action on Total Project Cost:☐

Increase

☐

Decrease

☐

New Project

☒

No Change

Total Project Cost Analysis

Adopted 2021 Total Project Cost

Previously Approved Changes

Approved Total Project Cost

Requested Total Project Cost

Requested (Increase)/Decrease

Project Costs

\$30,599,416

\$0

\$30,599,416

n/a

\$0

Action to be taken to Long-Range Financing Plan to address Total Project Cost change

_____ Transfer from Allowance for Cost and Schedule Changes

_____ Transfer from another project (specify in comments)

_____ Delay Project(s) (specify in comments)

_____ Delete Project(s) (specify in comments)

_____ Other _____

_____ Transfer to Allowance for Cost and Schedule Changes

Comments

Budget Review by:

Theresa Zwieg

Date:

12/15/2020

COMMISSION FILE NO: 21-022-2 **DATE INTRODUCED:** February 8, 2021

INTRODUCED BY: Executive Director (Signature on File in the Office of the Commission)

REFERRED BY COMMISSION CHAIRPERSON TO: Policy, Finance, and Personnel Committee

RELATING TO: Authorizing the Executive Director to Continue a Self-insured Workers' Compensation Program

SUMMARY:

The Commission is requested to authorize the Executive Director to continue a self-insured workers' compensation program for the District's workers compensation claims.

The District has been self-insured for its workers' compensation claims since 1988. The District is required to report to the Department of Workforce Development (Department) all compensable injuries. In addition, every three years, each self-insured political subdivision must provide the Department with a resolution, passed by the governing body, stating its intent and agreement to self-insure (Wisconsin Administrative Code DWD 80.60(3)).

The District's workers' compensation claims are administered by a third-party administrator, Gallagher Basset Services, Inc., with specific stop loss insurance provided by Midwest Employers Casualty Company.

The District has reviewed its workers' compensation program in 2018 and concluded that it would be cost effective for the District to remain self-insured for workers compensation. Since 2018 there have been no issues that would alter this conclusion.

ATTACHMENTS: BACKGROUND ☐ KEY ISSUES ☐ RESOLUTION ☒
FISCAL NOTE ☐ S/W/MBE ☐ OTHER ☐ _____

PFP_Self_Insured_WC_legislative_file.docx
01-18-21

COMMITTEE ACTION: _____ **DATE:** _____

COMMISSION ACTION: _____ **DATE:** _____

RESOLUTION

Authorizing the Executive Director to Continue a Self-insured Workers' Compensation Program

WHEREAS, the Milwaukee Metropolitan Sewerage District is a qualified political subdivision of the State of Wisconsin; and

WHEREAS, the Wisconsin Worker's Compensation Act (Act) provides that employers covered by the Act either insure their liability with workers' compensation insurance carriers authorized to do business in Wisconsin or to be exempted (self-insured) from insuring liabilities with a carrier and thereby assuming the responsibility for its own workers' compensation risk and payment; and

WHEREAS, the State of Wisconsin and its political subdivisions may self-insure workers' compensation without a special order from the Department of Workforce Development (Department) if they agree to report faithfully all compensable injuries and agree to comply with the Act and rules of the Department; and

WHEREAS, the Milwaukee Metropolitan Sewerage Commission at its February 22, 2021, meeting approved the continuation of the self-insured worker's compensation program, in compliance with Wisconsin Administrative Code DWD 80.60(3).

NOW, THEREFORE, BE IT RESOLVED, by the Milwaukee Metropolitan Sewerage Commission that:

- The self-insured workers' compensation program that is currently in effect for the District is continued.
- The Executive Director is authorized to forward certified copies of this resolution to the Worker's Compensation Division, Department of Workforce Development.

COMMISSION FILE NO: 21-023-2 **DATE INTRODUCED:** February 8, 2021

INTRODUCED BY: Executive Director (Signature on File in the Office of the Commission)

REFERRED BY COMMISSION CHAIRPERSON TO: Policy, Finance, and Personnel Committee

RELATING TO: Declaration of the Public Necessity and Approval of the Acquisition Plat (Relocation Order) for the Project C05051, Edgewood Avenue Near Surface Collector Extension Project

SUMMARY:

The Commission is requested to approve the acquisition plat for the Project C05051, Edgewood Avenue Near Surface Collector (NSC) Extension Project, and to authorize the Executive Director to approve future minor changes to the identified parcels and to approve the addition of new parcels where they have a minor impact on the overall project and land rights acquisition process.

The approval of the revised acquisition plat also authorizes the Executive Director to execute deeds, easements, purchase agreements, intergovernmental cooperation agreements, and any other related real estate documents with property owners and governmental agencies that have real estate that is affected by the project.

Upon approval and within 20 days, the revised acquisition plat (relocation order) will be filed with the Milwaukee County Clerk's Office as required by law, thereby allowing acquisition matters to proceed.

The Edgewood Avenue combined sewer service area (CSSA) generally drains the areas of the Village of Shorewood (Shorewood) and the City of Milwaukee (Milwaukee) east of North Oakland Avenue. Some areas within this CSSA experience basement backups and surface flooding during large precipitation events.

The District, Shorewood, and Milwaukee performed several studies to identify system improvements to reduce basement backup and flood risk in this CSSA. The studies recommended designing and constructing a new District NSC sewer in Edgewood Avenue.

ATTACHMENTS: **BACKGROUND** ☐ **KEY ISSUES** ☐ **RESOLUTION** ☒

FISCAL NOTE ☐ **S/W/MBE** ☐ **OTHER** ☒ Acquisition Plat

PFP_AcqPlat_C05051_Edgewood Avenue NSC Expansion_legislative_file.docx
01-15-21

COMMITTEE ACTION: _____ **DATE:** _____

COMMISSION ACTION: _____ **DATE:** _____

SUMMARY (Cont'd)

Declaration of the Public Necessity and Approval of the Acquisition Plat (Relocation Order) for the Project C05051, Edgewood Avenue Near Surface Collector Extension Project

The new NSC sewer, which is being designed under Project C05051, will start at North Maryland Avenue and extend west to the Oak Leaf Trail, where it will connect to the District's existing NS4 inline storage system drop shaft. The project also includes the design and construction of green infrastructure (GI) improvements in Shorewood's River Park.

The new NSC sewer will reduce the risk of basement backups within the Village of Shorewood and City of Milwaukee and reduce surface flooding during large precipitation events. This project will also improve hydraulic conditions at the connection between local sewers (Shorewood and Milwaukee) to District Facilities. The GI component will help the District meet its 2035 goal of capturing 740 million gallons of water every time it rains, which will reduce water pollution and improve rivers and Lake Michigan.

There are eight real estate interests required for this project. The rights required are permanent and temporary easements. The landowners include Shorewood, Milwaukee County, Milwaukee County Parks, and We Energies.

The cost of the acquisitions is expected to be within the Executive Director's authority.

RESOLUTION

Declaration of the Public Necessity and Approval of the Acquisition Plat (Relocation Order) for the Project C05051, Edgewood Avenue Near Surface Collector Extension Project

RESOLVED, by the Milwaukee Metropolitan Sewerage Commission, that:

1. The acquisition plat (relocation order) is approved and the public necessity is hereby declared for Parcels 1 through 8.
2. The Executive Director is authorized to approve future changes to the identified parcels and the addition of new parcels where they have a minor impact on the overall project and the land rights acquisition process.
3. The Executive Director may accept and execute on behalf of the Commission all project related easement documents, memorandums of understanding, intergovernmental cooperation agreements, jurisdictional offers, award of compensation damages, leases, purchase agreements, deeds of conveyance, permits, or any other related real estate documents.

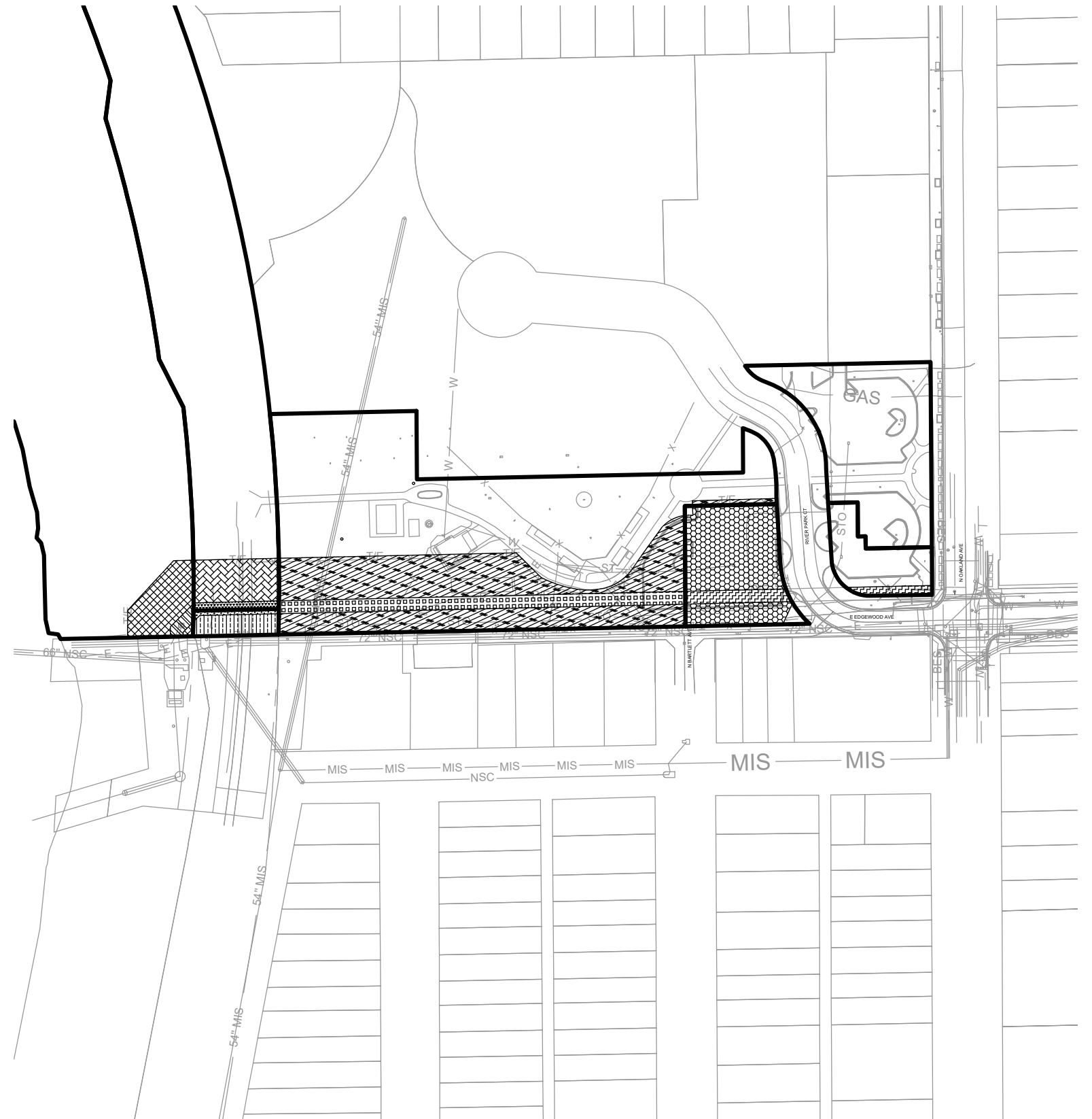
MILWAUKEE METROPOLITAN
SEWERAGE DISTRICT
PROJECT ID C05051


ACQUISITION PLAT

FOR

EDGEWOOD AVENUE NEAR SURFACE COLLECTOR EXPANSION PROJECT


CITY OF MILWAUKEE
MILWAUKEE COUNTY, WISCONSIN

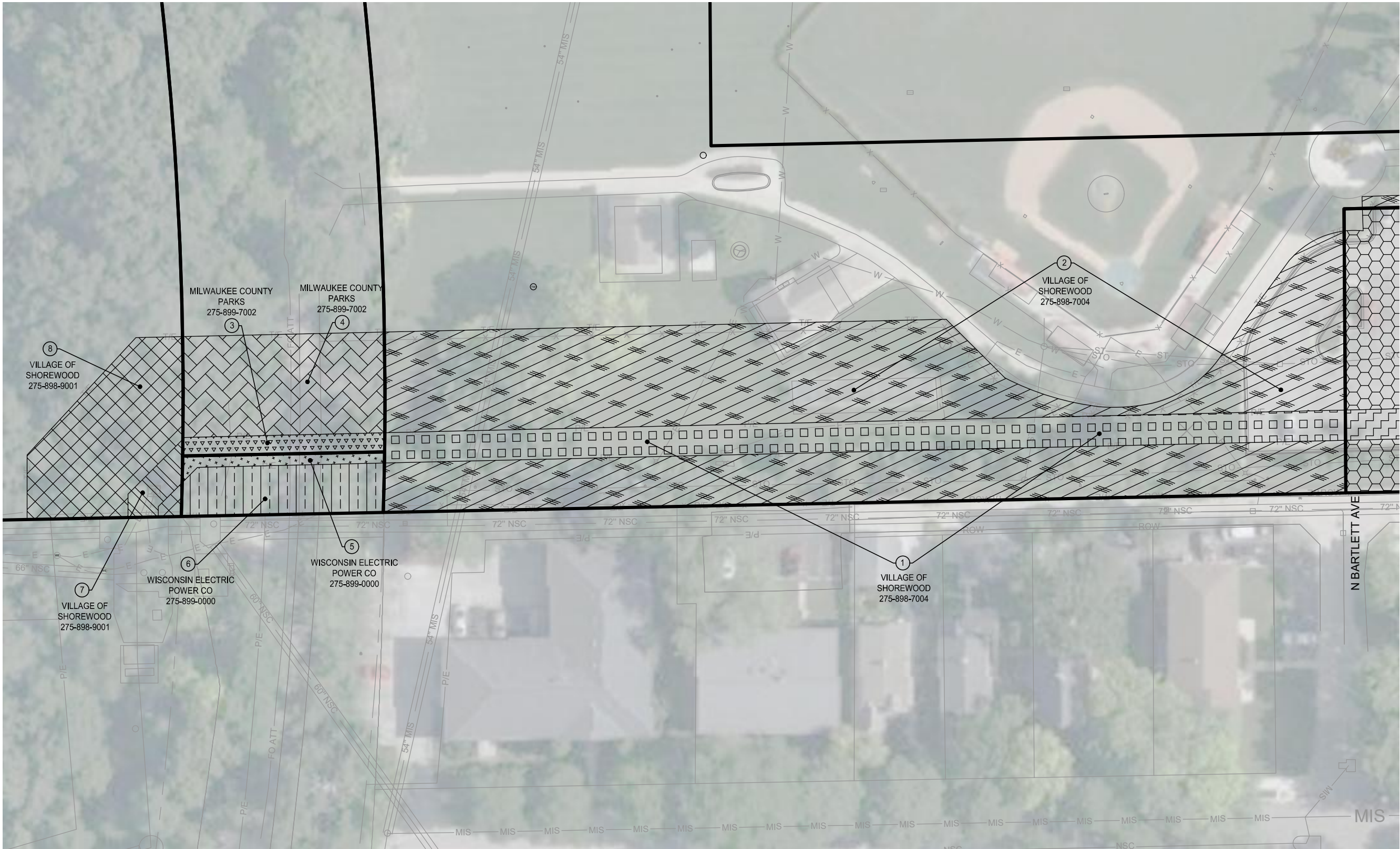



REUSE OF DOCUMENTS THIS DOCUMENT AND THE IDEAS AND DESIGNS INCORPORATED HEREIN IS AN INSTRUMENT OF PROFESSIONAL SERVICE AND IS NOT TO BE USED, IN WHOLE OR IN PART, FOR ANY OTHER PROJECT WITHOUT THE WRITTEN AUTHORIZATION OF THE MILWAUKEE METROPOLITAN SEWERAGE DISTRICT.	HORIZONTAL DATUM NAD27 WISCONSIN STATE PLANE SOUTH ZONE COORDINATE SYSTEM	PM D. KASPER							MILWAUKEE METROPOLITAN SEWERAGE DISTRICT	DRAWING NO.: ACP-1
	VERTICAL DATUM NGVD29 NATIONAL GEODETIC VERTICAL DATUM, 1988	DRT R. CHAVEZ							EDGEWOOD AVENUE NEAR SURFACE COLLECTOR EXPANSION PROJECT 02-22-21 MMSD COMMISSION APPROVED	SHEET: 1
		CHK D. TALARCZYK	REV. NO.	DATE	REVISION DESCRIPTION	BY	APVD		DATE: FEBRUARY 2021	CONTRACT: C05051
										MMSD FILE: ACP01.dwg

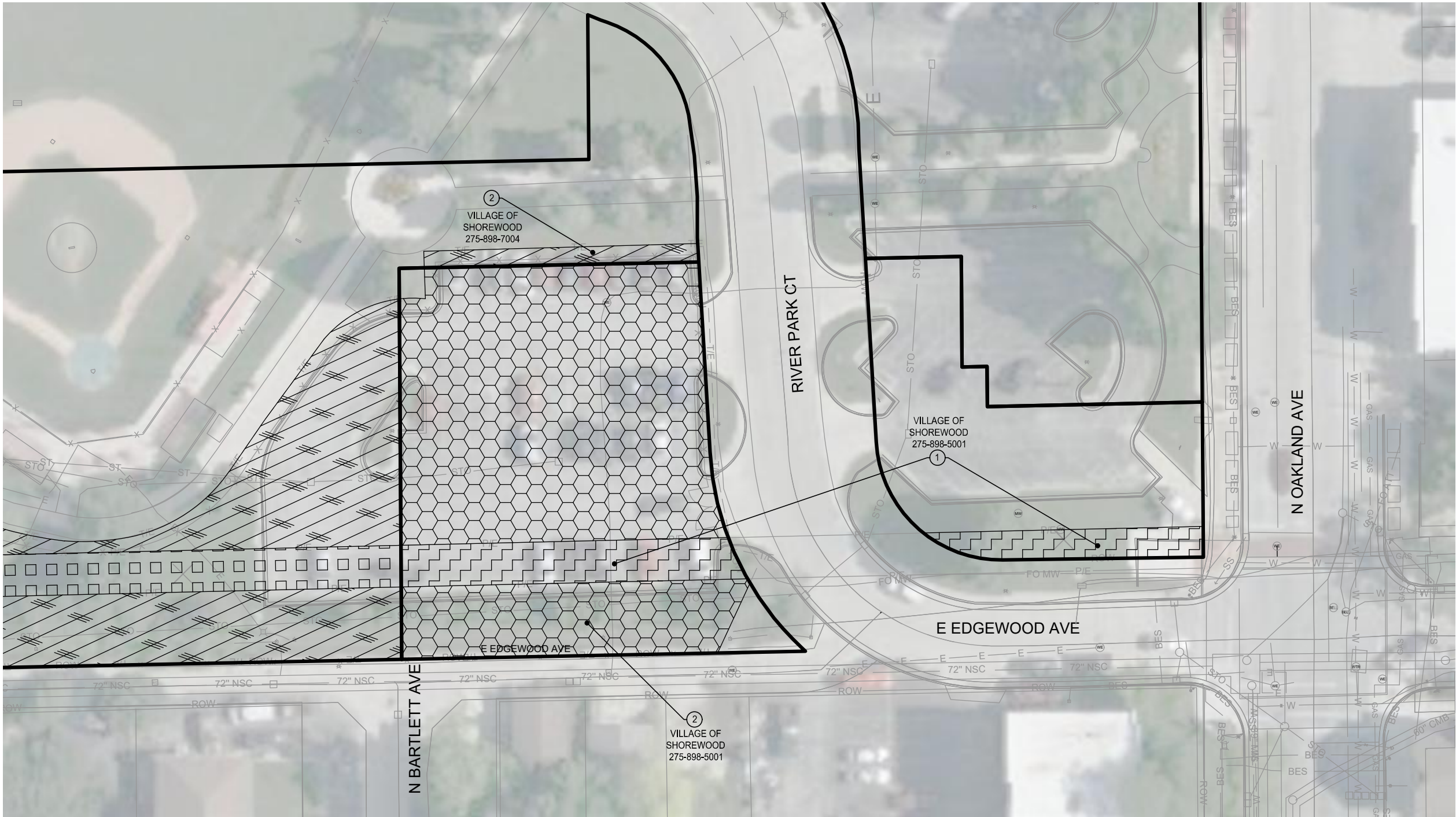
SCHEDULE OF LANDS & INTERESTS REQUIRED	
--	--


[illegible]

REUSE OF DOCUMENTS THIS DOCUMENT AND THE IDEAS AND DESIGNS INCORPORATED HEREIN IS AN INSTRUMENT OF PROFESSIONAL SERVICE AND IS NOT TO BE USED, IN WHOLE OR IN PART, FOR ANY OTHER PROJECT WITHOUT THE WRITTEN AUTHORIZATION OF THE MILWAUKEE METROPOLITAN SEWERAGE DISTRICT.	HORIZONTAL DATUM NAD27 WISCONSIN STATE PLANE SOUTH ZONE COORDINATE SYSTEM	PM D. KASPER					 MMSD PARTNERS FOR A CLEANER ENVIRONMENT	MILWAUKEE METROPOLITAN SEWERAGE DISTRICT	DRAWING NO.: ACP-	
	VERTICAL DATUM NGVD29 NATIONAL GEODETIC VERTICAL DATUM ON 1929	DRFT R. CHAVEZ						EDGEWOOD AVENUE NEAR SURFACE COLLECTOR EXPANSION PROJECT 02-22-21 MMSD COMMISSION APPROVED	SHEET:	
		CHK D. TALARCZYK	REV. NO.	DATE	REVISION DESCRIPTION			BY	APVD	DATE: FEBRUARY 202
										CONTRACT: C0505
										MMSD FILE: ACP02.dwg



REUSE OF DOCUMENTS THIS DOCUMENT AND THE IDEAS AND DESIGNS INCORPORATED HEREIN IS AN INSTRUMENT OF PROFESSIONAL SERVICE AND IS NOT TO BE USED, IN WHOLE OR IN PART, FOR ANY OTHER PROJECT WITHOUT THE WRITTEN AUTHORIZATION OF THE MILWAUKEE METROPOLITAN SEWERAGE DISTRICT.	HORIZONTAL DATUM NAD27 WISCONSIN STATE PLANE SOUTH ZONE COORDINATE SYSTEM VERTICAL DATUM NGVD29 NATIONAL GEODETIC VERTICAL DATUM ON 1929	PM D. KASPER						MILWAUKEE METROPOLITAN SEWERAGE DISTRICT	DRAWING NO.:	ACP-4		
		DRFT R. CHAVEZ							EDGEWOOD AVENUE NEAR SURFACE COLLECTOR EXPANSION PROJECT 02-22-21 MMSD COMMISSION APPROVED	SHEET:	4	
		CHK D. TALARCZYK	REV. NO.	DATE	REVISION DESCRIPTION			BY	APVD	DATE:	FEBRUARY 2021	
										CONTRACT:	C05051	
										MMSD FILE:	ACP04.dwg	



REUSE OF DOCUMENTS THIS DOCUMENT AND THE IDEAS AND DESIGNS INCORPORATED HEREIN IS AN INSTRUMENT OF PROFESSIONAL SERVICE AND IS NOT TO BE USED, IN WHOLE OR IN PART, FOR ANY OTHER PROJECT WITHOUT THE WRITTEN AUTHORIZATION OF THE MILWAUKEE METROPOLITAN SEWERAGE DISTRICT.	HORIZONTAL DATUM NAD27 WISCONSIN STATE PLANE SOUTH ZONE COORDINATE SYSTEM VERTICAL DATUM NGVD29 NATIONAL GEODETIC VERTICAL DATUM ON 1929	PM D. KASPER						MILWAUKEE METROPOLITAN SEWERAGE DISTRICT	DRAWING NO.:	ACP-6			
		DRFT R. CHAVEZ								EDGEWOOD AVENUE NEAR SURFACE COLLECTOR EXPANSION PROJECT	SHEET:	6	
		CHK D. TALARCZYK	REV. NO.	DATE						02-22-21 MMSD COMMISSION APPROVED	DATE:	FEBRUARY 2021	
		REVISION DESCRIPTION							BY	APVD	CONTRACT:	C05051	
											MMSD FILE:	ACP06.dwg	

COMMISSION FILE NO: 21-024-2 **DATE INTRODUCED:** February 8, 2021

INTRODUCED BY: Executive Director (Signature on File in the Office of the Commission)

REFERRED BY COMMISSION CHAIRPERSON TO: Policy, Finance, and Personnel Committee

RELATING TO: Approval of Job Content Value and Job Title

SUMMARY:

Policy, Finance, and Personnel Committee approval is required for changes in job content values and job titles as a result of changes in position responsibilities, organizational changes affecting job duties, or to establish a job content value for newly created positions. Based on the District's process of evaluating positions, the Job Content Committee convened to evaluate this position. Using established methodology and lead by the Carlson-Dettmann consultant, the following changes are recommended to job content values (points and pay grade) and/or job title:

Current Title	Recommended Title	Current pts/grade	Recommended pts/grade
New position	Business Analyst	NA	572/11

ATTACHMENTS: BACKGROUND ☐ KEY ISSUES ☒ RESOLUTION ☒
FISCAL NOTE ☒ S/W/MBE ☐ OTHER ☐ _____

*PFP_JobContentJobTitle_legislative_file.docx
01-20-21*

COMMITTEE ACTION: _____ **DATE:** _____

COMMISSION ACTION: _____ **DATE:** _____

KEY ISSUES

Approval of Job Content Value and Job Title

The job content value and job title recommended are based upon an objective review of positions by the District's Job Content Evaluation Committee utilizing the Carlson-Dettmann rating system. The Committee evaluates positions using a point factor system that assigns points in the categories of Formal Preparation and Experience, Decision Making, Thinking Challenges and Problem Solving, Interactions and Communications, and Work Environment.

Business Analyst: The primary duty of this position is to ensure effective and efficient use of the District's Enterprise Resource Planning/Human Capital Management system, (ERP/HCM). This position will be the chief collaborator with core departments utilizing the ERP/HCM. Key responsibilities include analyzing departmental operations, improving performance through enabling technologies, as well as serving as a consultant to the ERP for workflows and using other systems to improve operational efficiencies. A review of the position has determined it to be consistent in complexity and responsibility with positions in pay grade 11, 572 points.

RESOLUTION

Approval of Job Content Value and Job Title

RESOLVED, by the Milwaukee Metropolitan Sewerage Commission, that the following job content value, pay grade, and job title are approved:

Title	Points/Pay Grade
Business Analyst	572/11



O&M Budget Fiscal Note

RELATING TO:

Approval of Job Content Value and Job Title

Cost Center: Information Technology Services	Line Item: 511
--	--------------------------

Line Item Impact			
2021 Original Budget		\$2,140,537	
Carryovers or Transfers		\$0	
Adjusted Budget		\$2,140,537	
Estimated Annual Expenditure including Request		\$2,140,537	
Anticipated Year End Balance		\$0	
Actual Year to Date Expenditures Through 1/20		\$71,454	

For unfavorable Year End Balance, identify funding source:

☐ Absorbed within the Division
 ☐ Other Division
 ☐ Unallocated Reserve

Anticipated Expenditure Timing	Requested Expenditures	Anticipated Savings/Revenues	Net Fiscal Impact
Current Year (2021)	\$63,675	\$0	\$63,675
Subsequent	\$87,134	\$0	\$87,134
Total Cost	\$150,809	\$0	\$150,809

Comments: The 2021 estimated expenditures reflect the impact of the new position for three quarters of the year. The "subsequent" includes the salary for 26 pay periods for one year. Since this is a new and unfilled position, the actual impact is subject to recruitment and hiring timing as well as actual hiring salaries. The new position is replacing a vacant authorized and funded position, therefore, there is sufficient funding for the request.

Budget Review by:	Date
Christine Durkin	1/20/2021

POLICY, FINANCE & PERSONNEL COMMITTEE MEETING

February 8, 2021

EXECUTIVE DIRECTOR'S REPORT

21-002-01

A. Monthly Reports

February 2021

Sun	Mon	Tue	Wed	Thu	Fri	Sat
	<i>1</i>	<i>2</i>	<i>3</i>	<i>4</i>	<i>5</i>	<i>6</i>
<i>7</i>	8 Operations Committee-9:00 a.m. PF&P Committee- 9:05 a.m.	<i>9</i>	<i>10</i>	<i>11</i>	<i>12</i>	<i>13</i>
<i>14</i> ST. VALENTINE'S DAY	<i>15</i> PRESIDENTS' DAY	<i>16</i>	<i>17</i>	<i>18</i>	<i>19</i>	<i>20</i>
<i>21</i>	22 Commission-9:00 a.m.	<i>23</i>	<i>24</i>	<i>25</i>	<i>26</i>	<i>27</i>
<i>28</i>						